



# Louisiana Traffic Records Data Report 2015

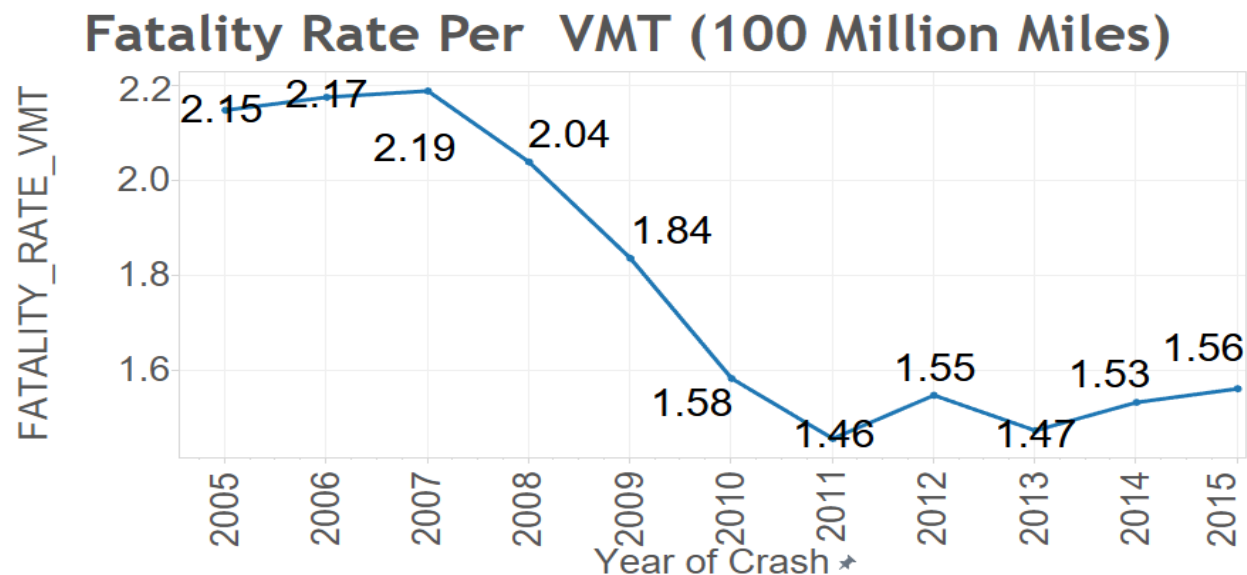
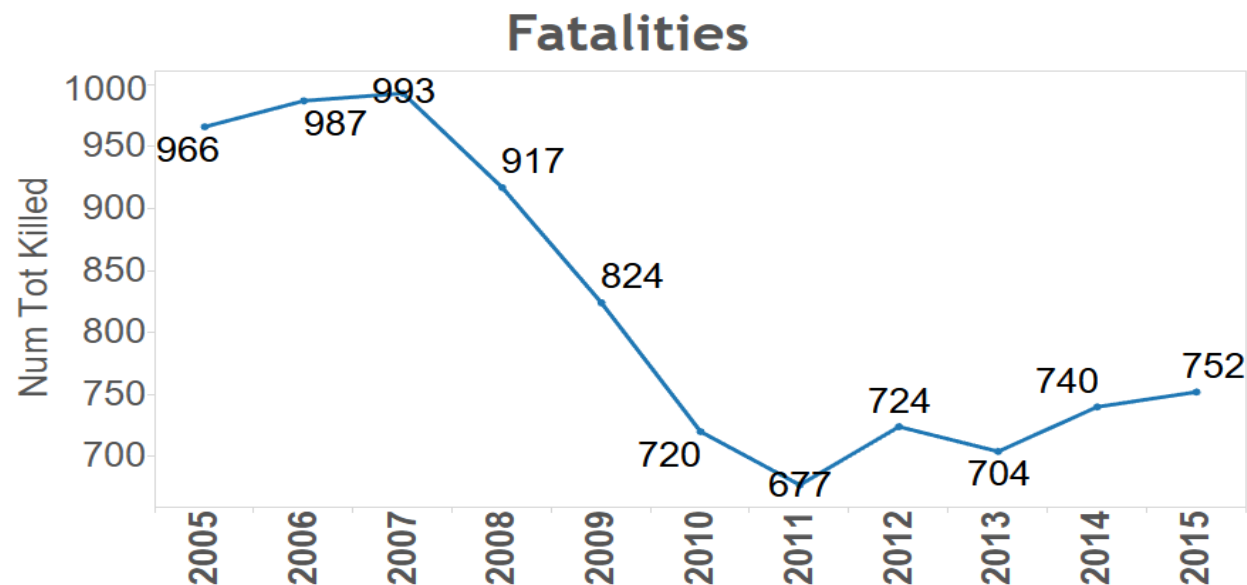
[hsrg.lsu.edu](http://hsrg.lsu.edu)

[datareports.lsu.edu](http://datareports.lsu.edu)

**Dr. Helmut Schneider**

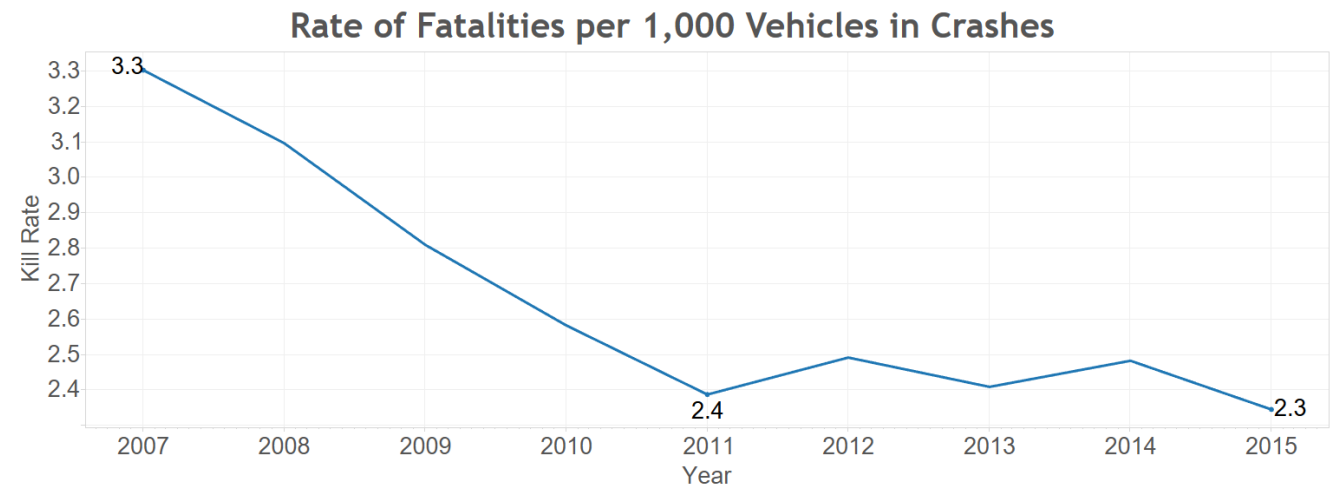
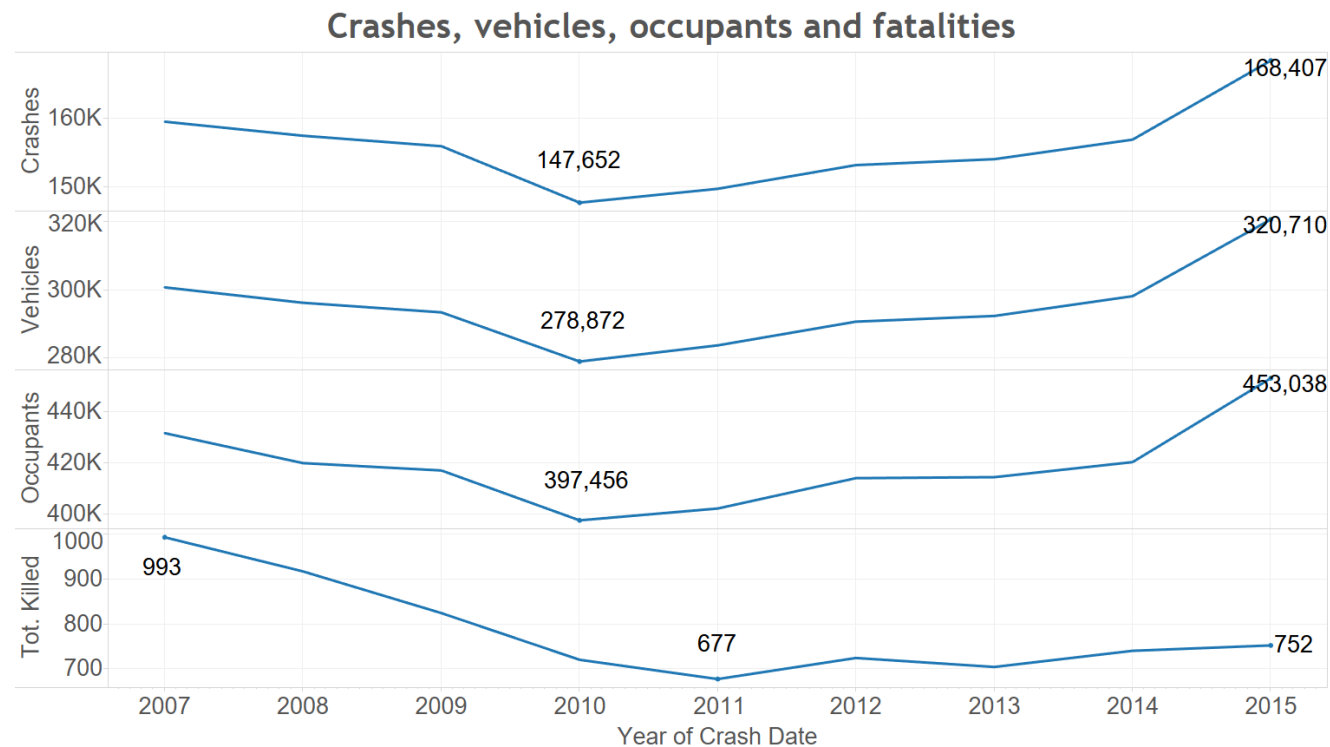


# Trend in Fatalities



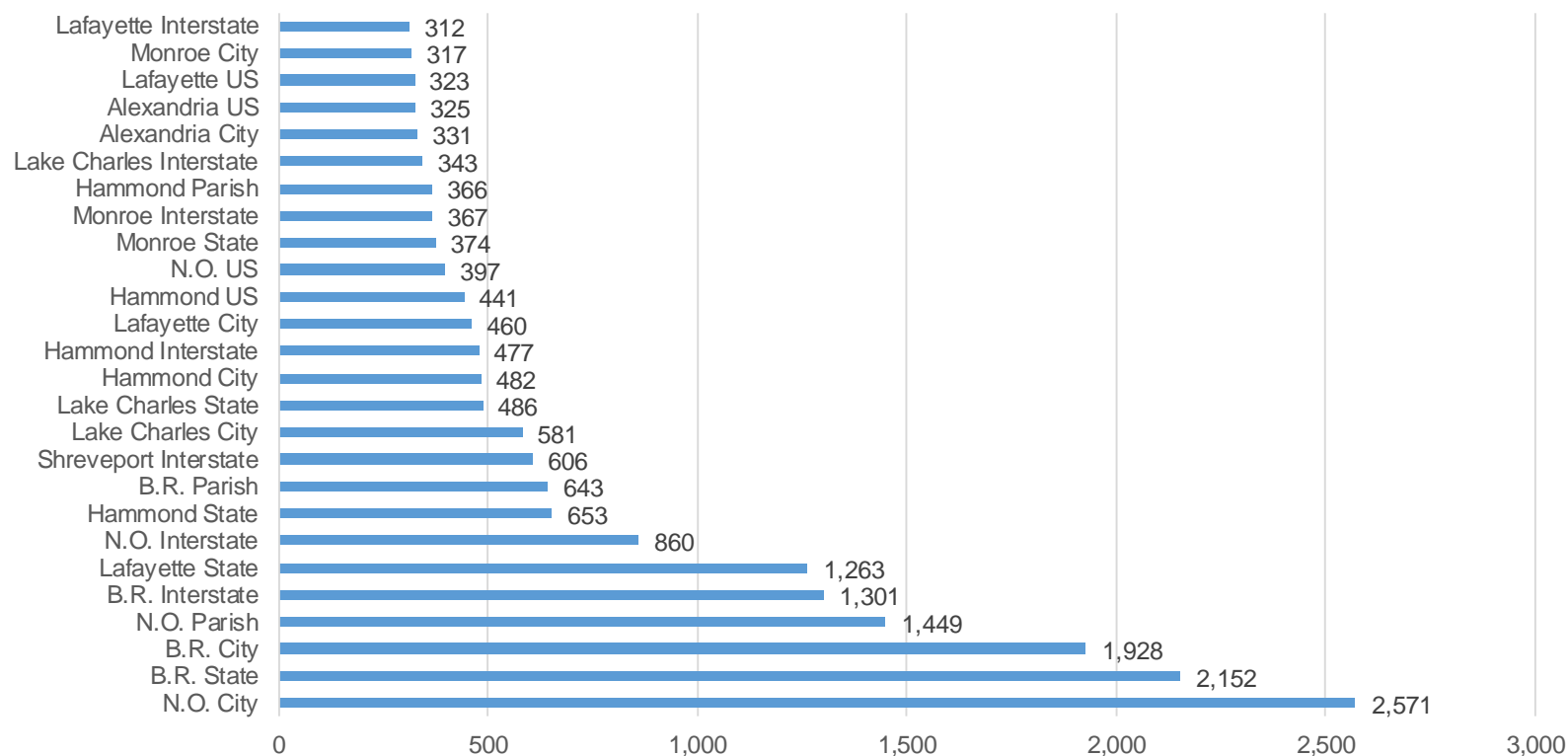


- Crashes
- Vehicles
- Occupants
- Fatalities
- Fat. Rate



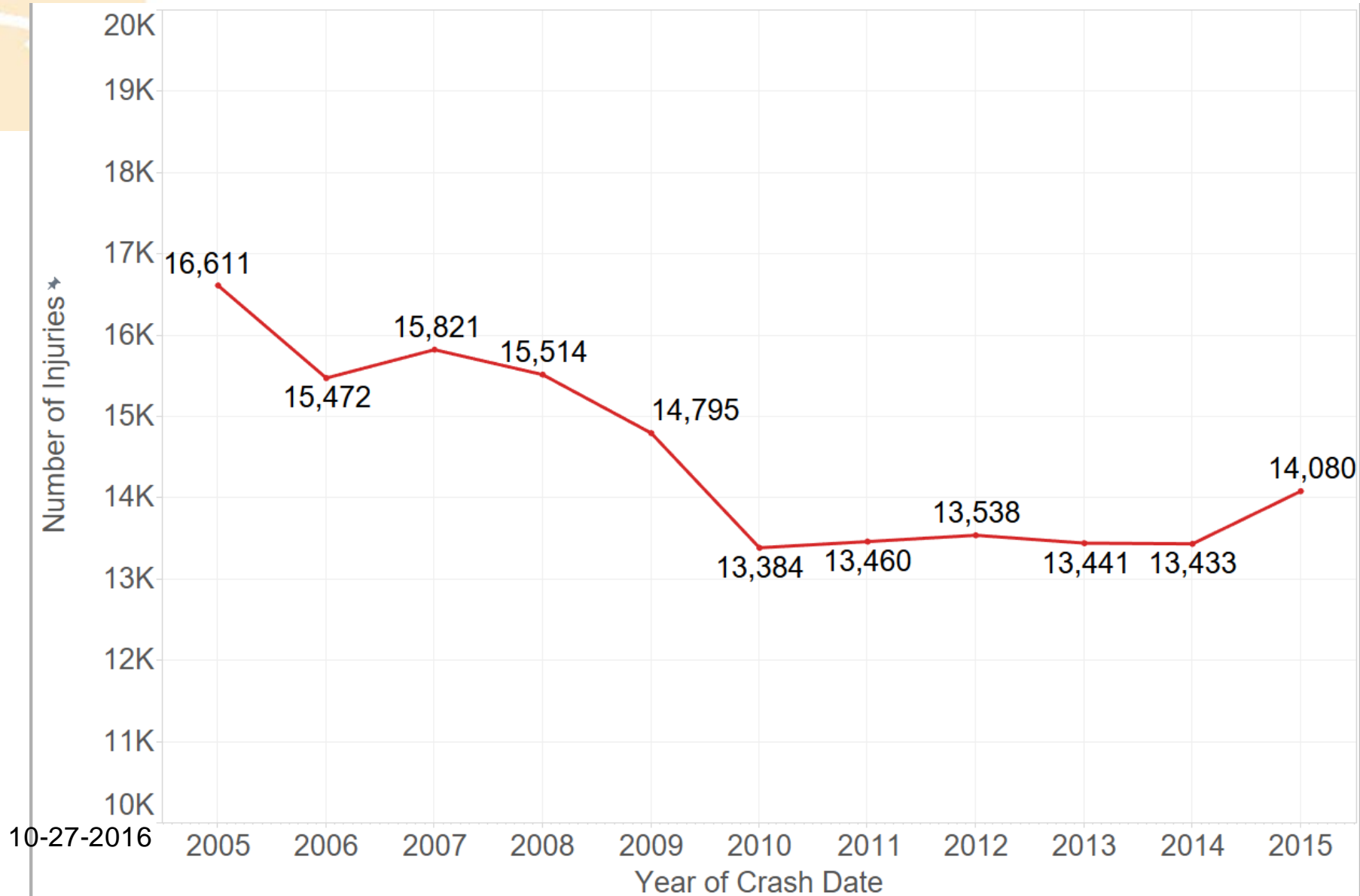


# Increase in Crashes 2010-2015 By HWY Type and Troop Area





# Critical and Severe Injuries





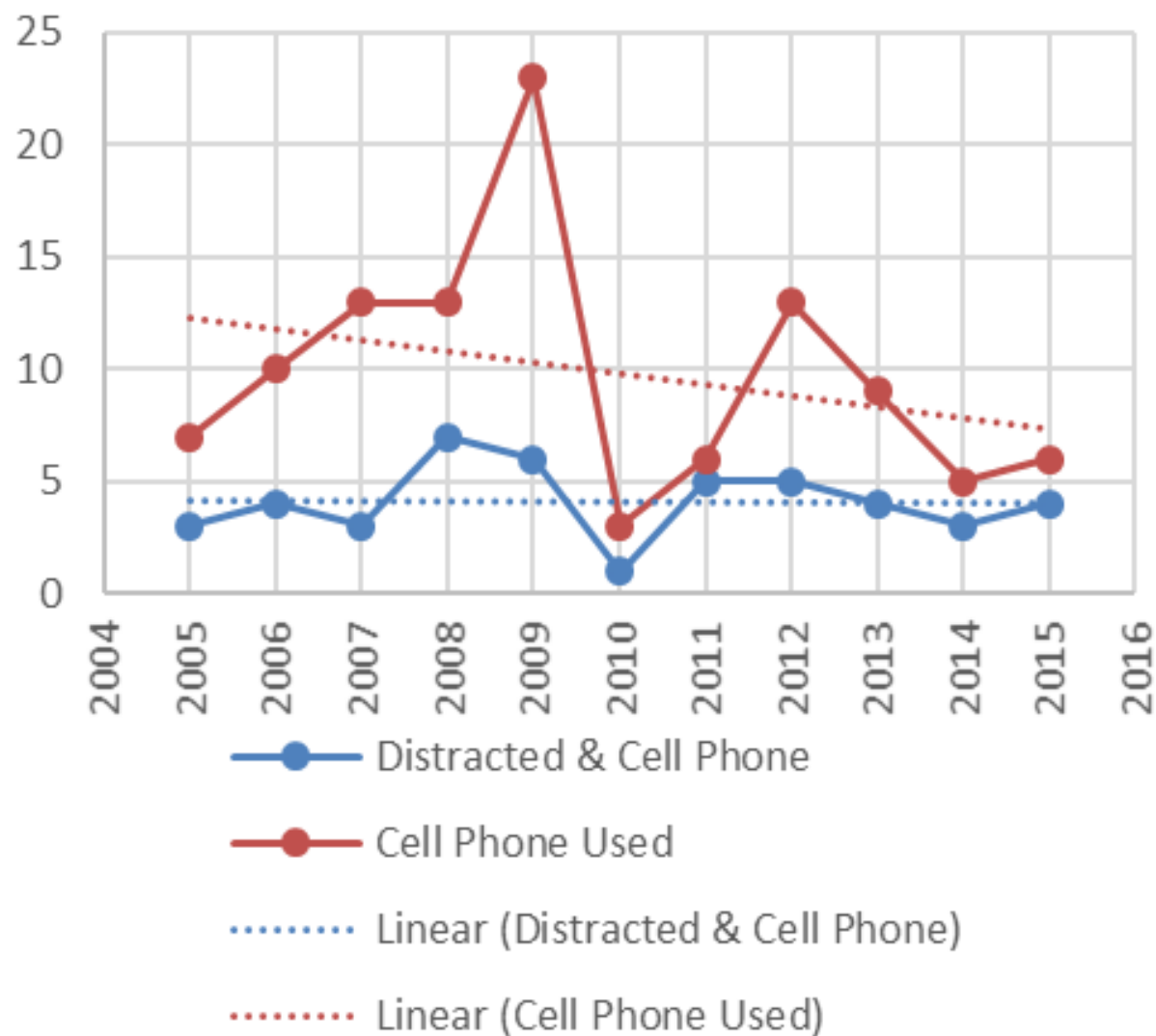
# Highlights 2015 versus 2014 Fatalities



- Interstates: 96 versus 110- down 14
- Elevated Interstates: 7 no change
- Bicycles: 33 versus 12 – up 21
- Motorcycles: 92 versus 83 – up 9
- Trains: 2 versus 4 - down 2
- Hit-and-Run: 41 versus 42 – down 1
- Commercial Vehicles: 85 versus 92 – down 7



# Distraction



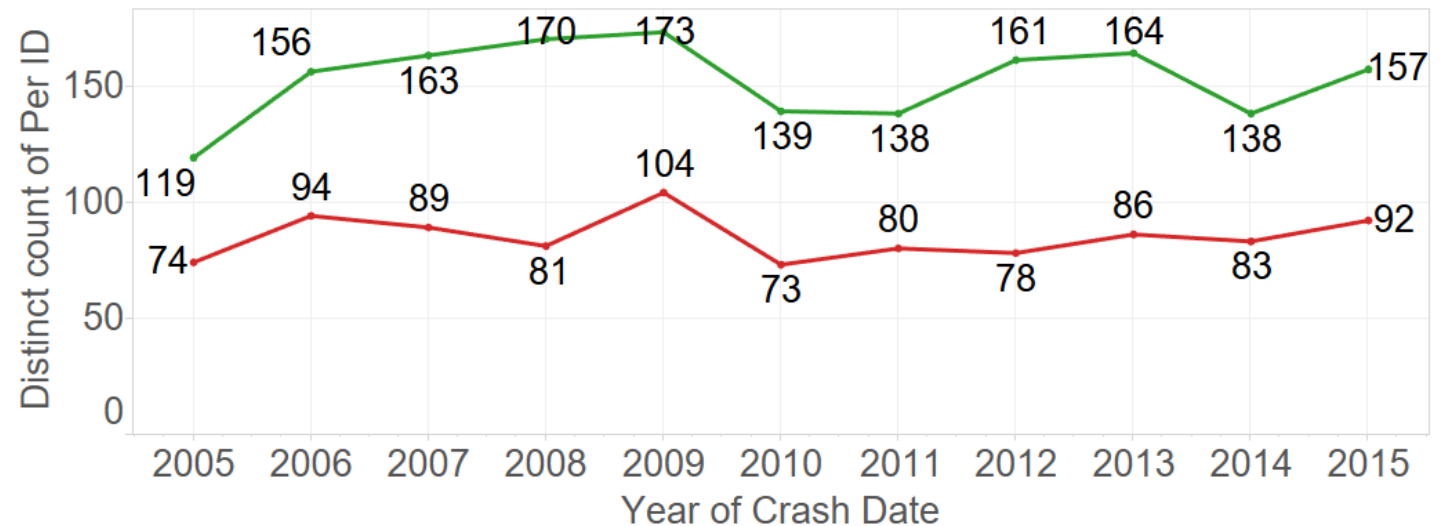


# Motorcycle Fatalities and Critical Injuries

## Percent of Injury Type

Year..	No Injuiiry	Complaint	Critical	Fatal	Moderate
2005	24.2%	33.5%	5.8%	3.6%	33.0%
2006	23.9%	31.9%	7.0%	4.2%	33.0%
2007	22.9%	33.4%	7.1%	3.9%	32.7%
2008	24.4%	33.7%	6.9%	3.3%	31.7%
2009	24.8%	31.3%	7.4%	4.5%	32.0%
2010	23.4%	34.3%	6.9%	3.6%	31.8%
2011	24.0%	33.5%	5.9%	3.4%	33.3%
2012	26.2%	32.5%	7.0%	3.4%	31.0%
2013	24.4%	31.7%	7.6%	4.0%	32.3%
2014	24.1%	32.2%	6.6%	4.0%	33.0%
2015	25.2%	31.5%	7.2%	4.2%	31.8%

## Fatalities and Critical Injuries

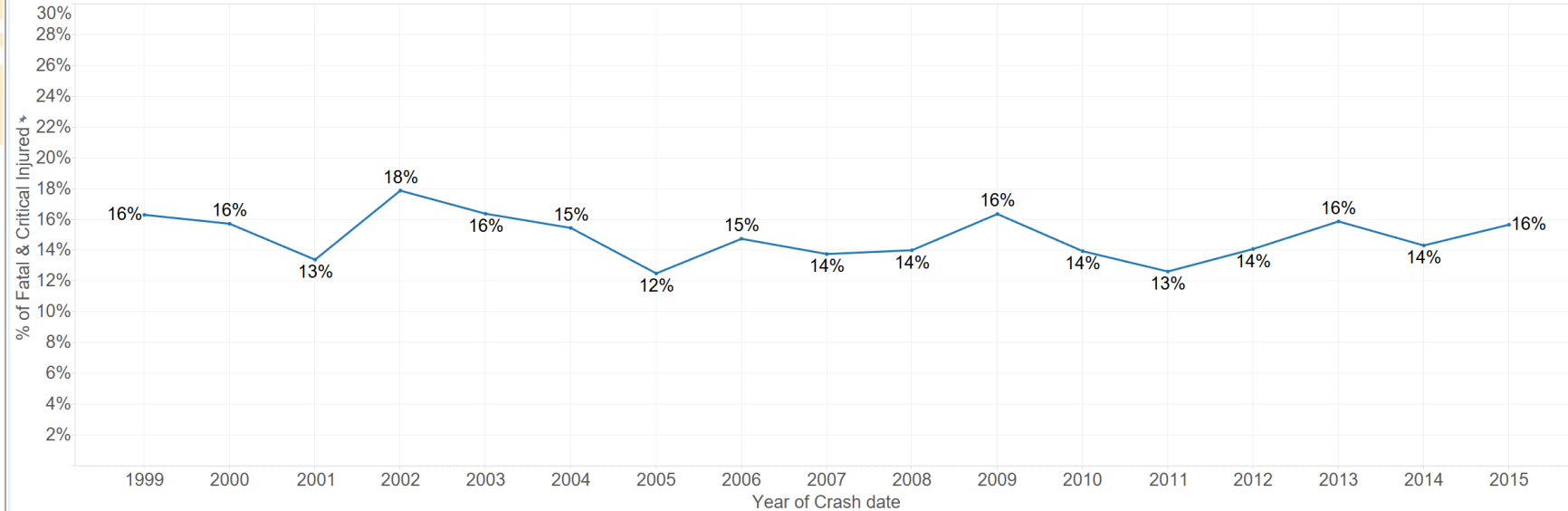




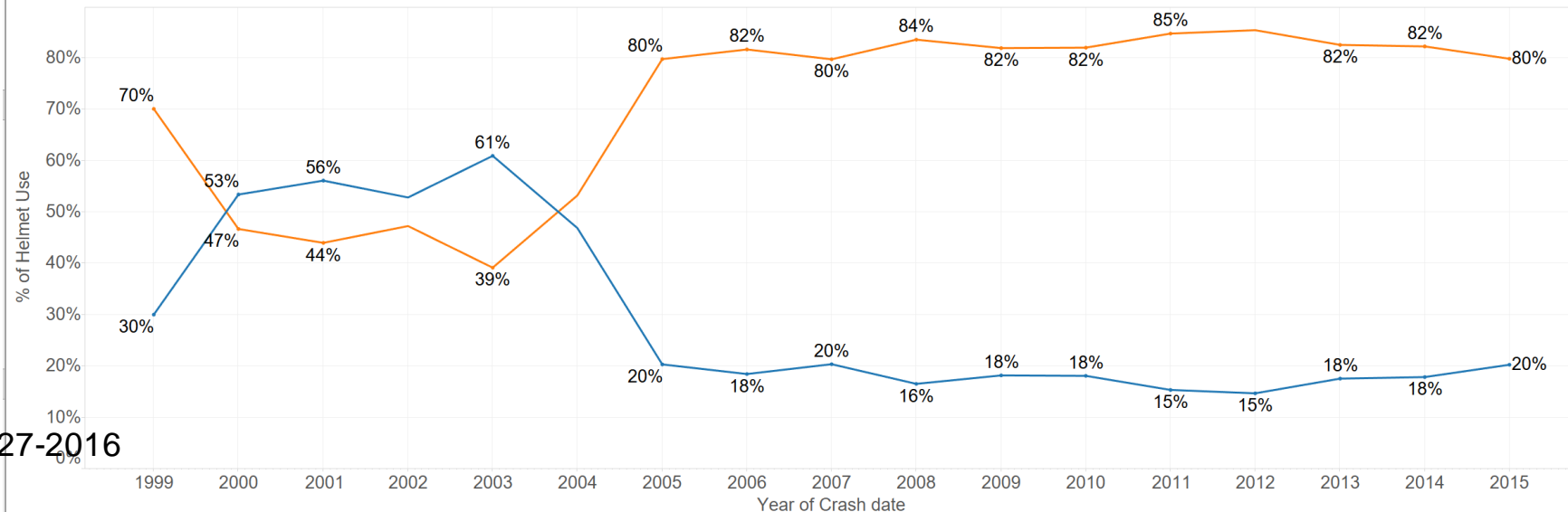


# Percent Motorcycle Fatalities & Critical Injuries

Percent Fatalities & Crit. Inj

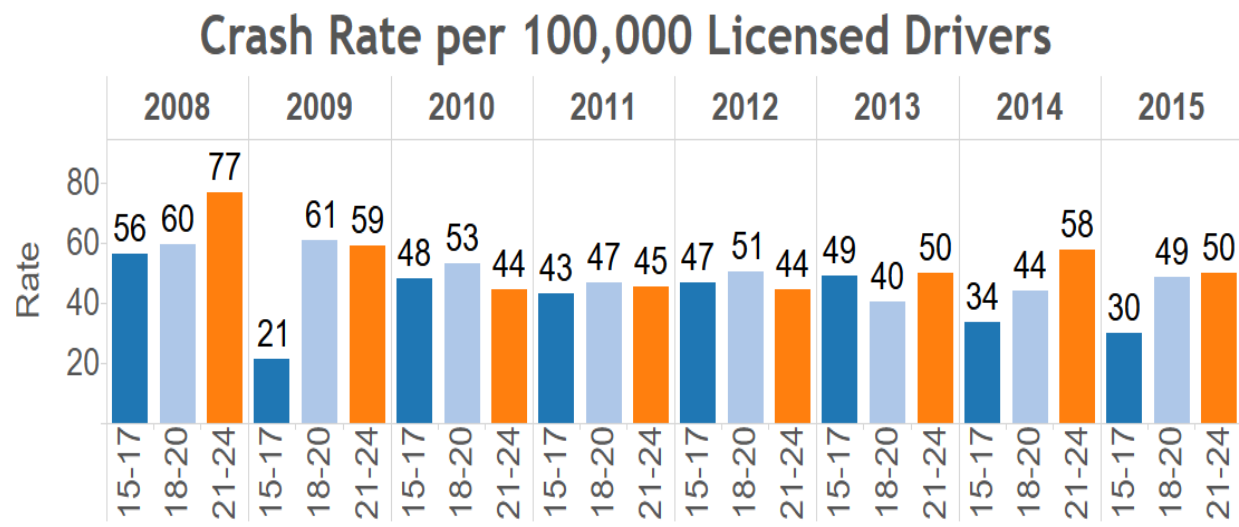
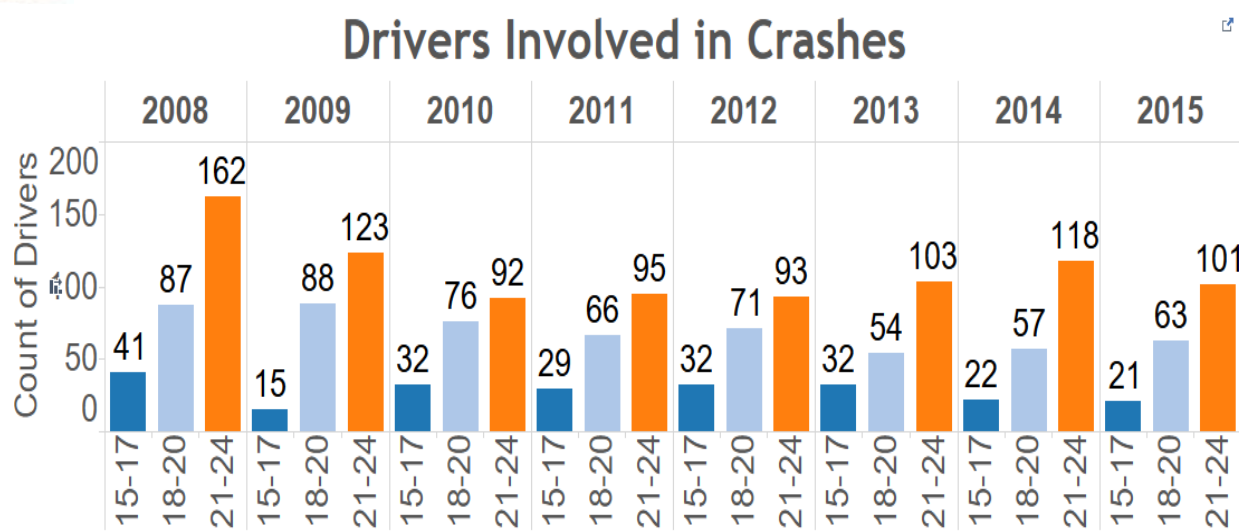


Percent Helmet Use



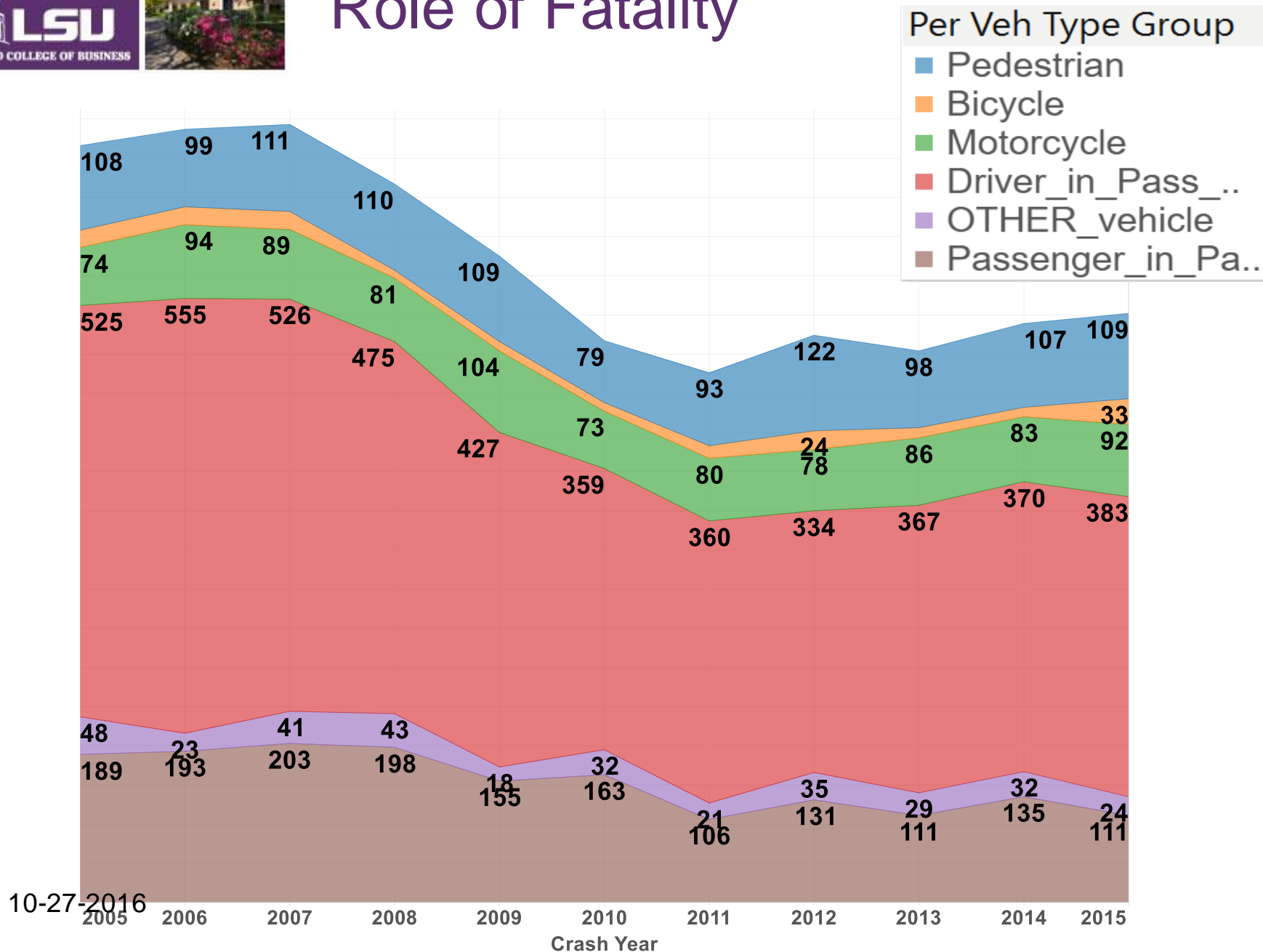
10-27-2016

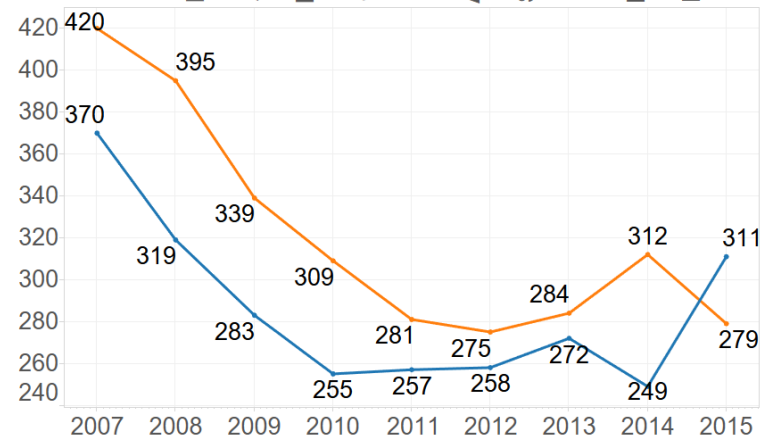
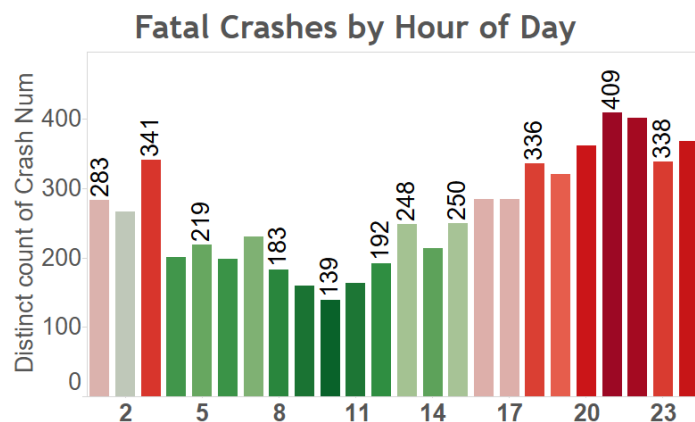
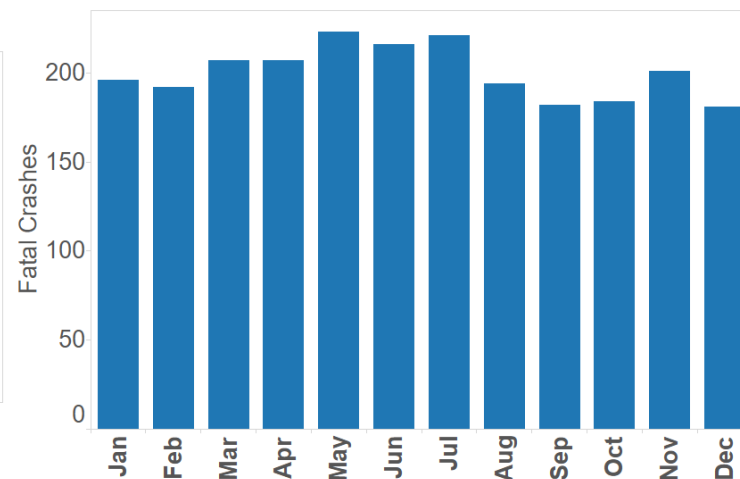
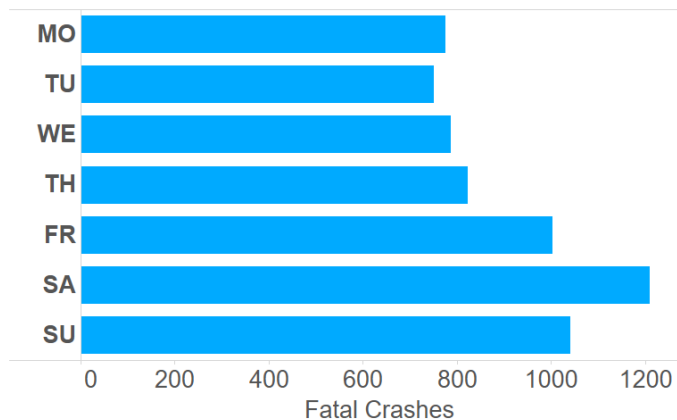
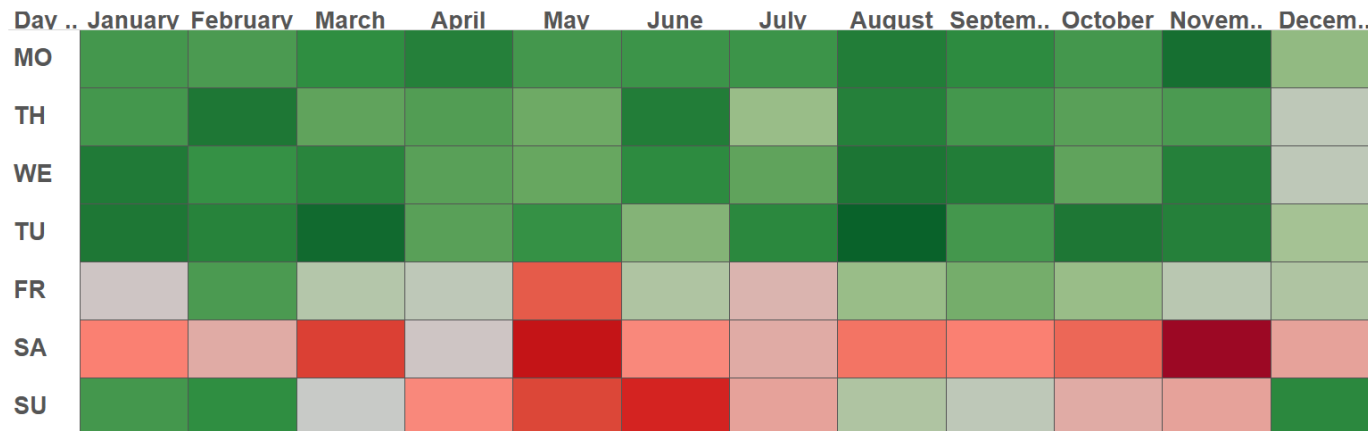
# Young Drivers in Fatal Crashes





# Role of Fatality

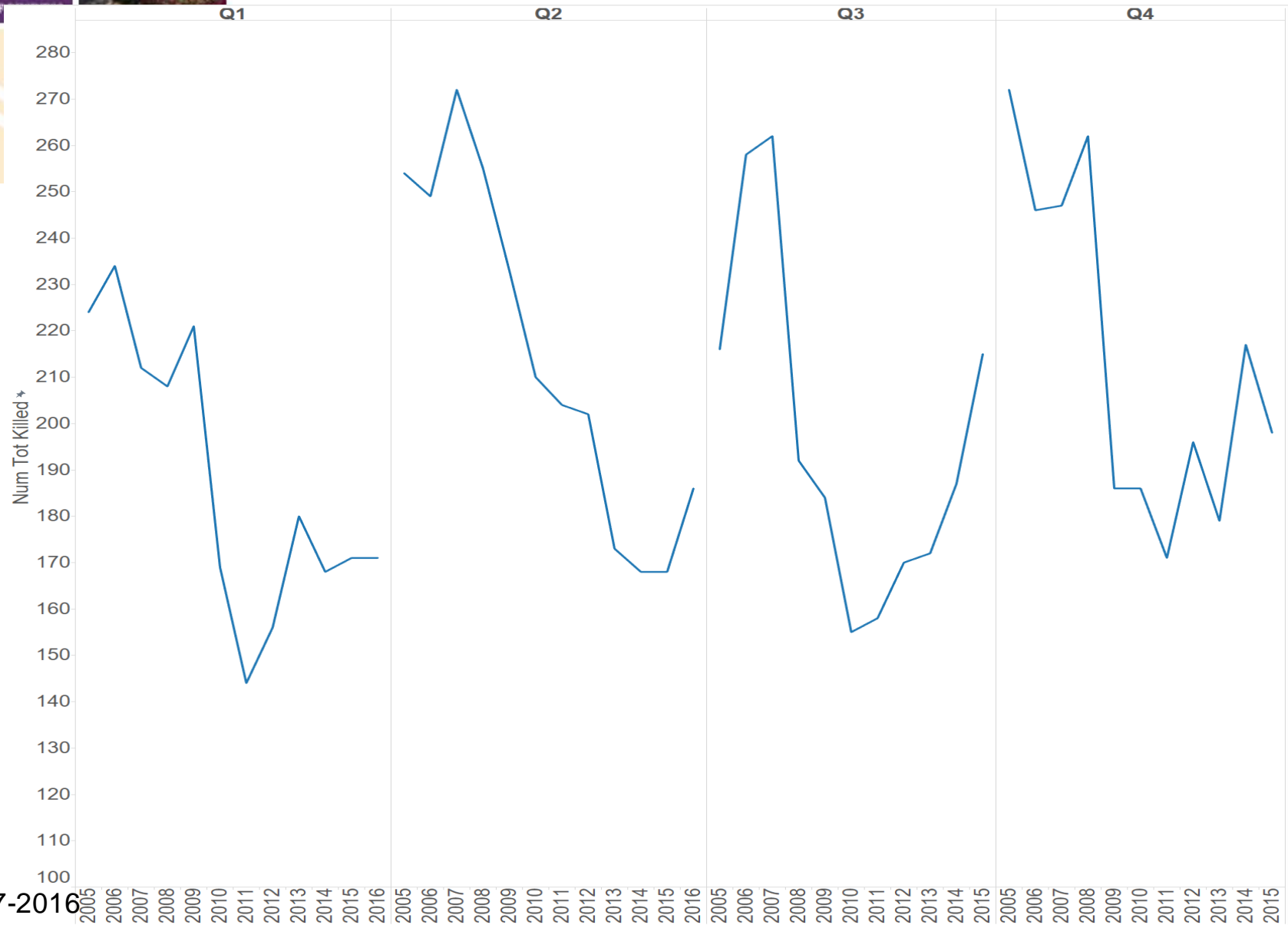




10-27-2016



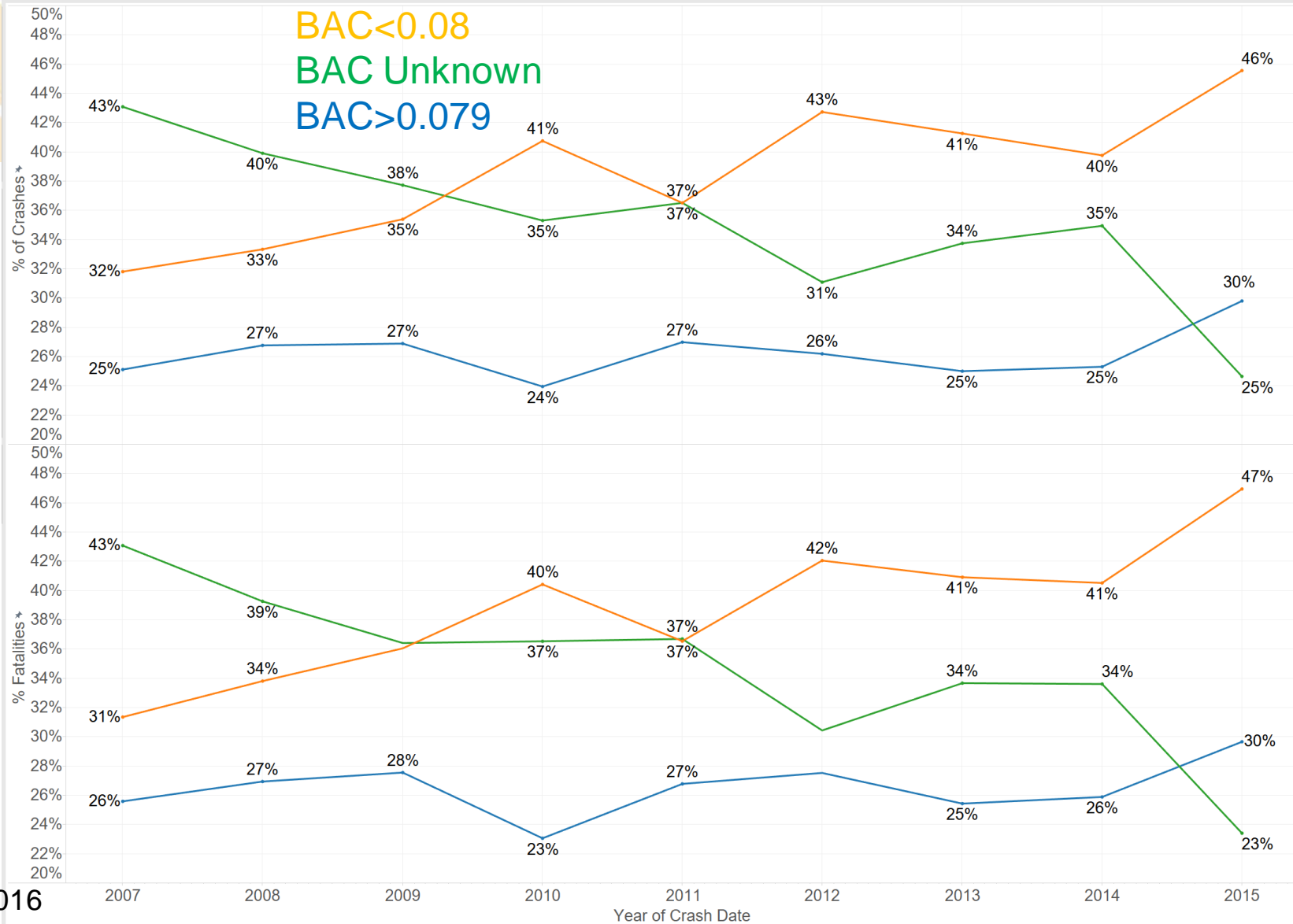
# Fatalities by Quarter



10-27-2016



# Observed Alcohol Impaired Fatal Crashes and Fatalities (BAC $\geq$ 0.08)



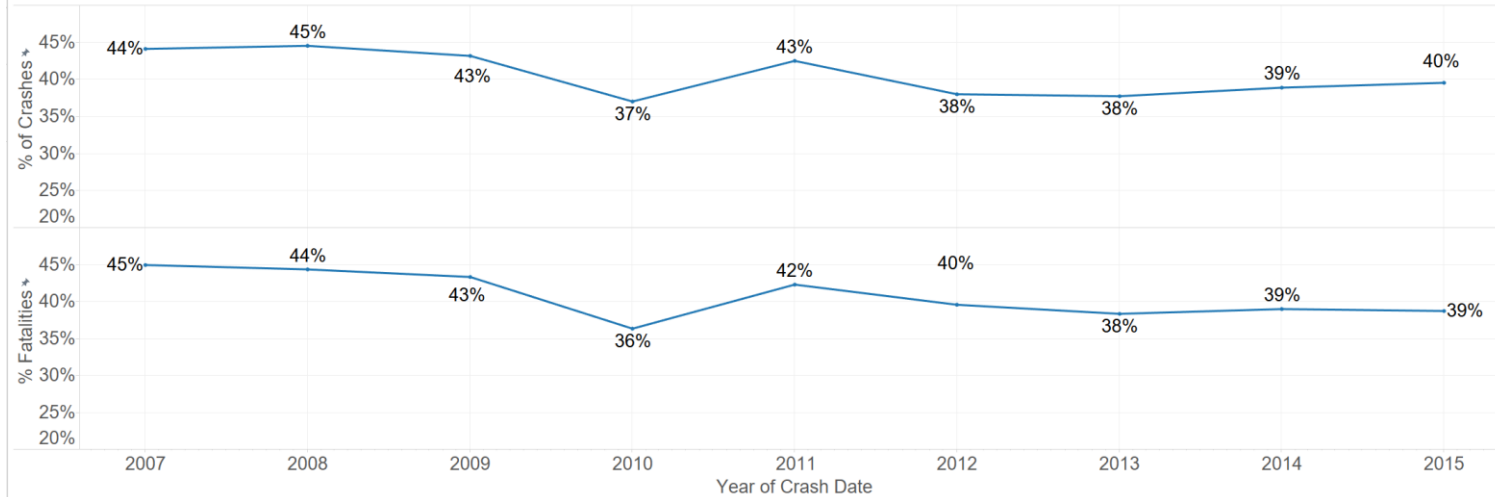


# Percent Impaired Fatal Crashes & Fatalities based on only known BAC Predicted Alcohol Percentage

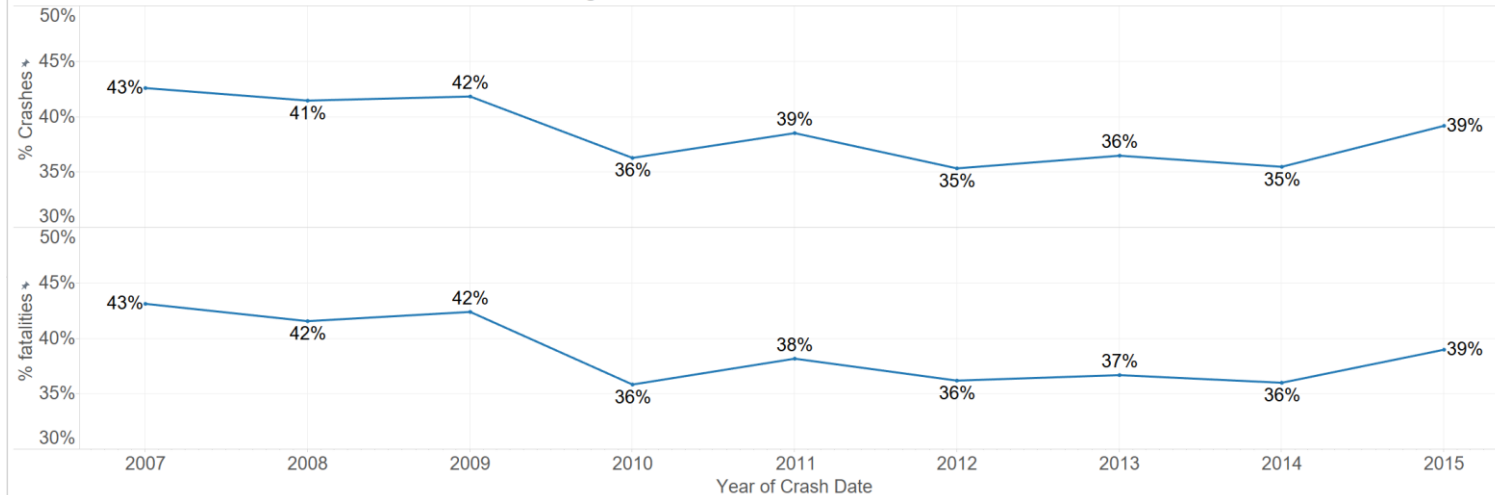


Unknown  
excluded.

Alcohol Impaired Fatal Crashes and Fatalities (At least one driver with BAC $\geq$ 0.08)



Percentage Predicted Alcohol in Fatal Crashes

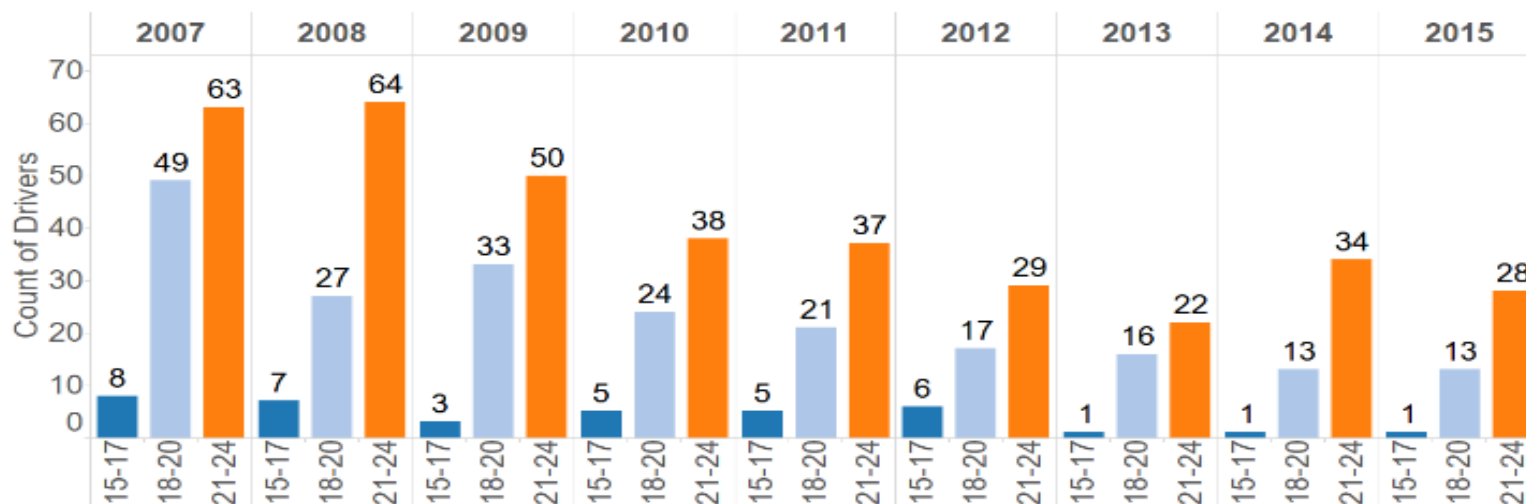


10-27-2016

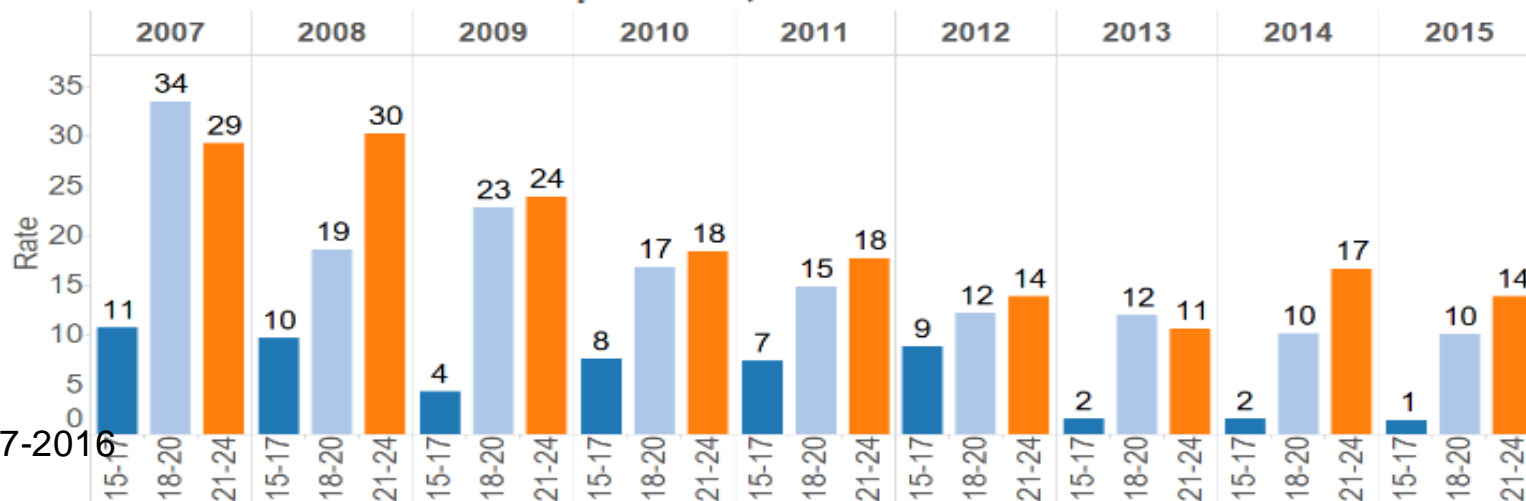


# Youths Alcohol Fatal Crashes

## Drivers Involved in Crashes



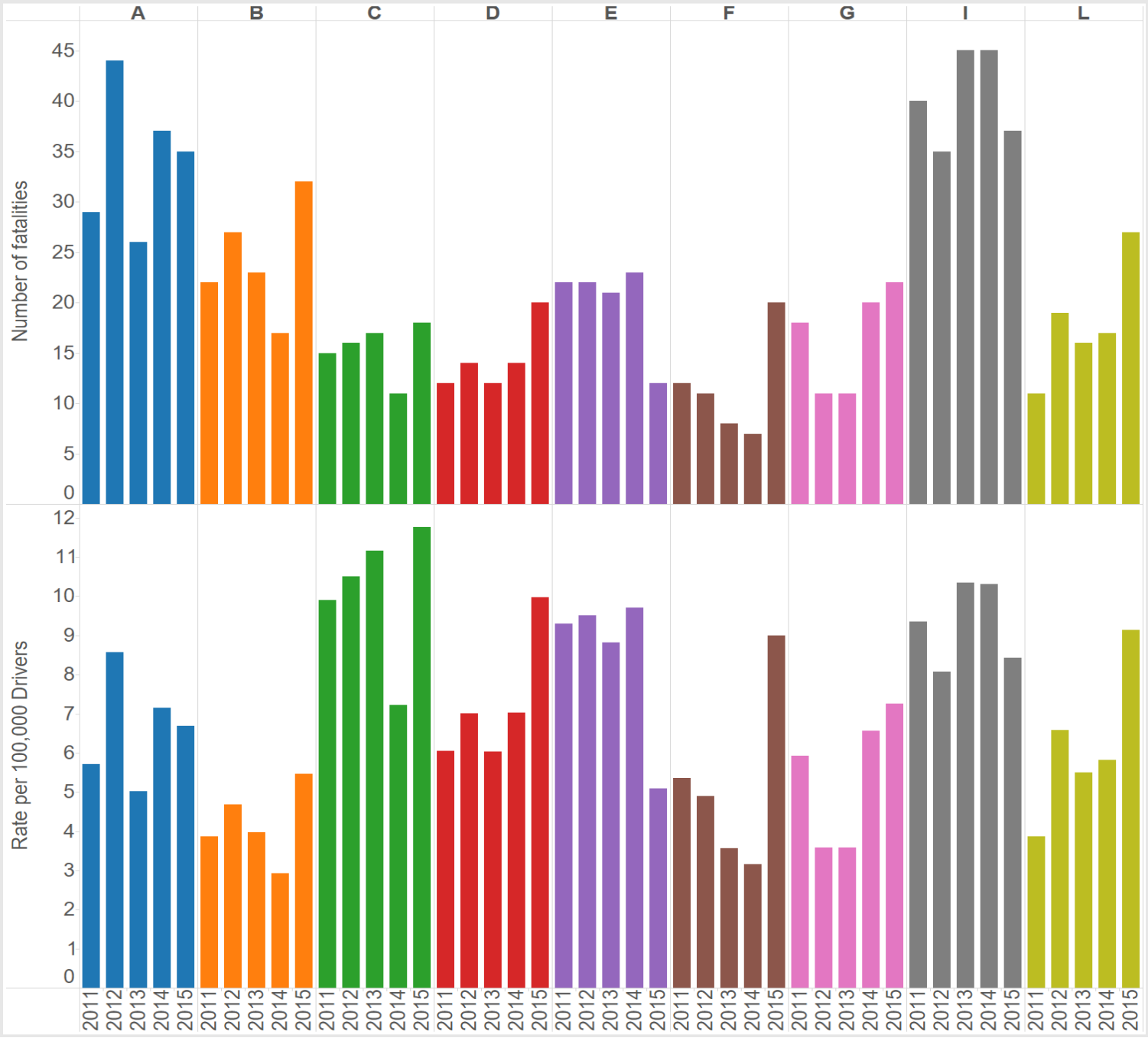
## Crash Rate per 100,000 Licensed Drivers





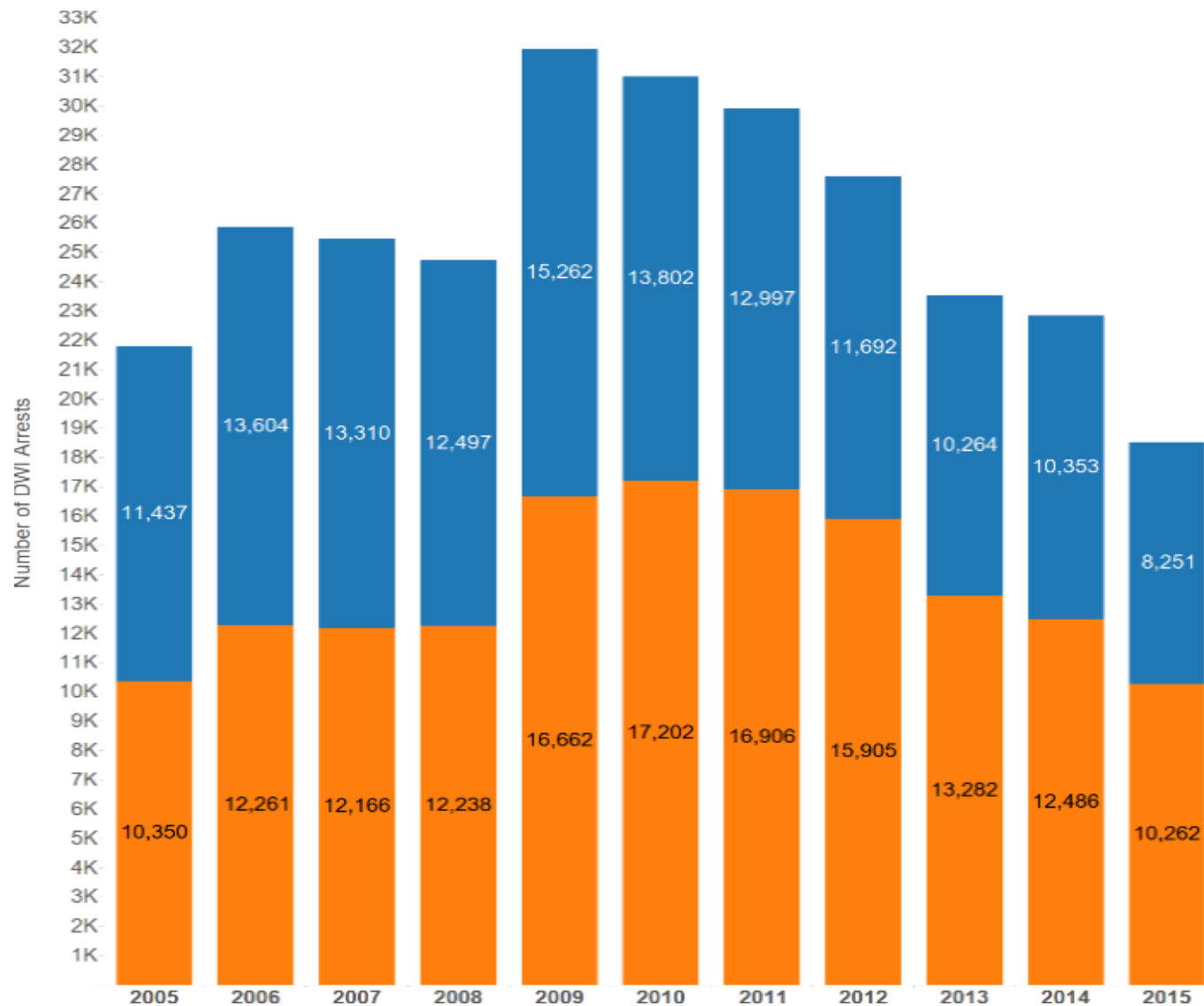
# Impaired Driving Fatalities by Troop

10-27-2016





# DWI Arrests



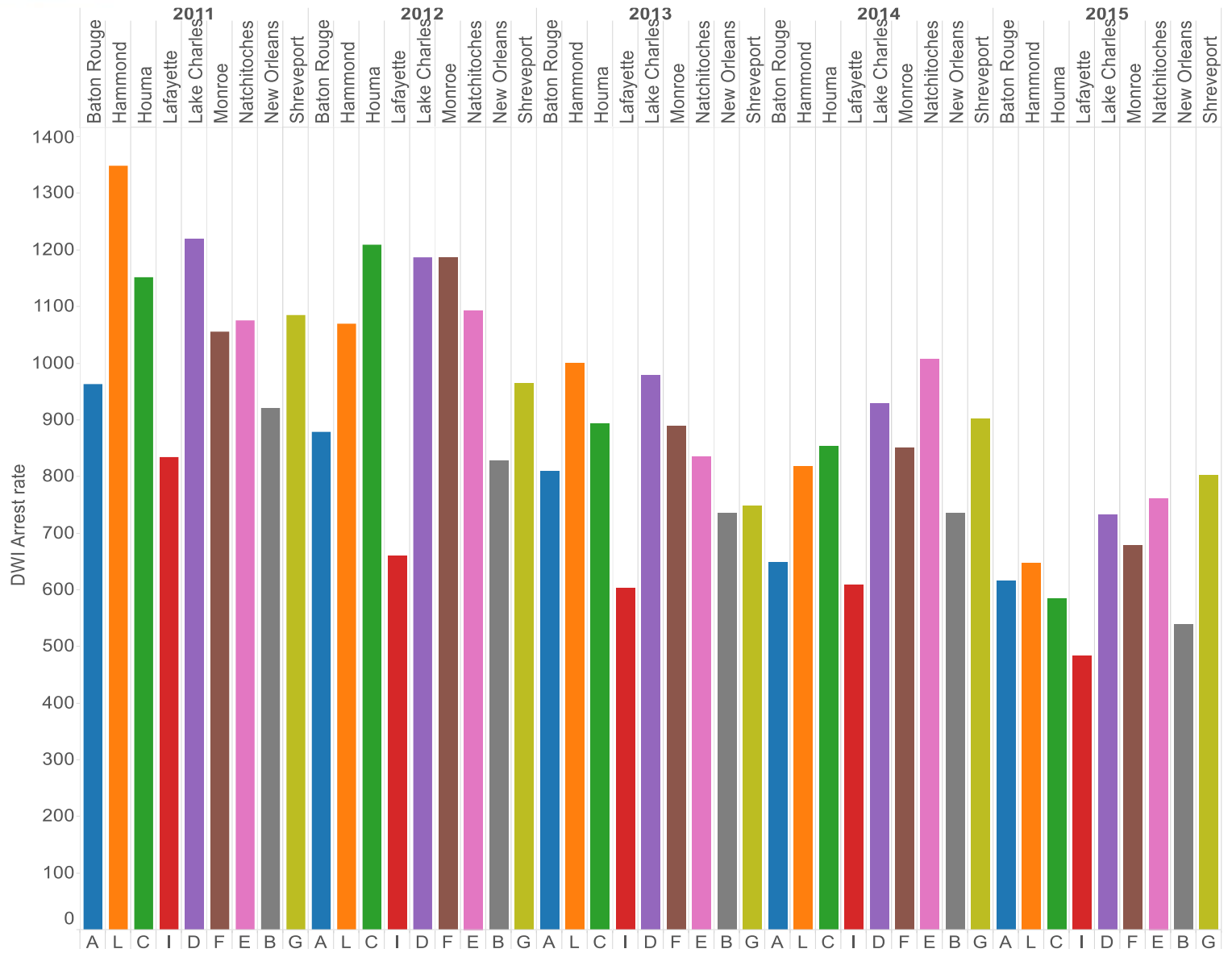
10-27-2016



# DWI Arrests Trend

## TROOP Name

- Baton Rouge
- Hammond
- Houma
- Lafayette
- Lake Charles
- Monroe
- Natchitoches
- New Orleans
- Shreveport

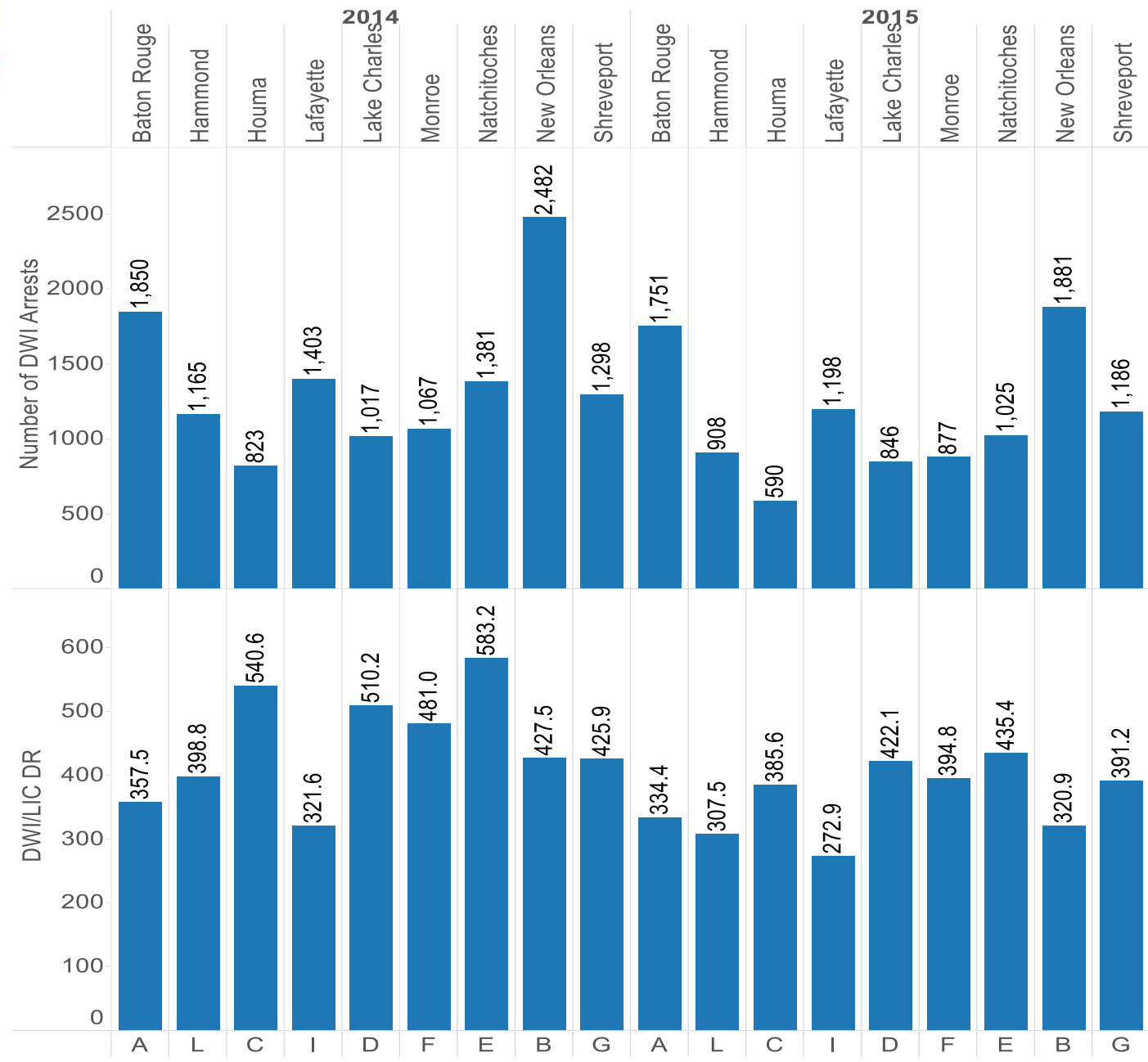


10-27-2016

# DWI Arrests per 100,000 Licensed Drivers

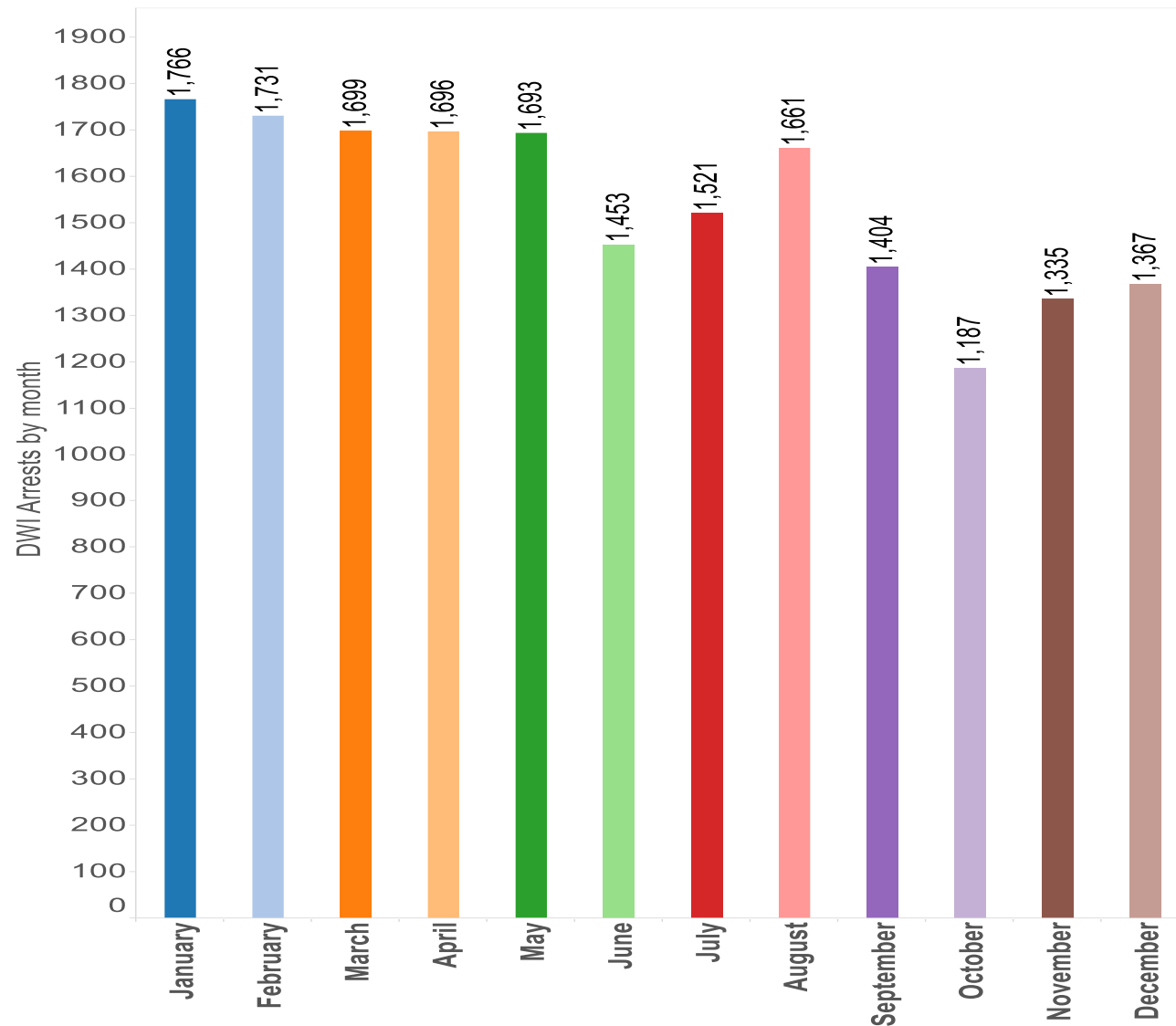


10-27-2016





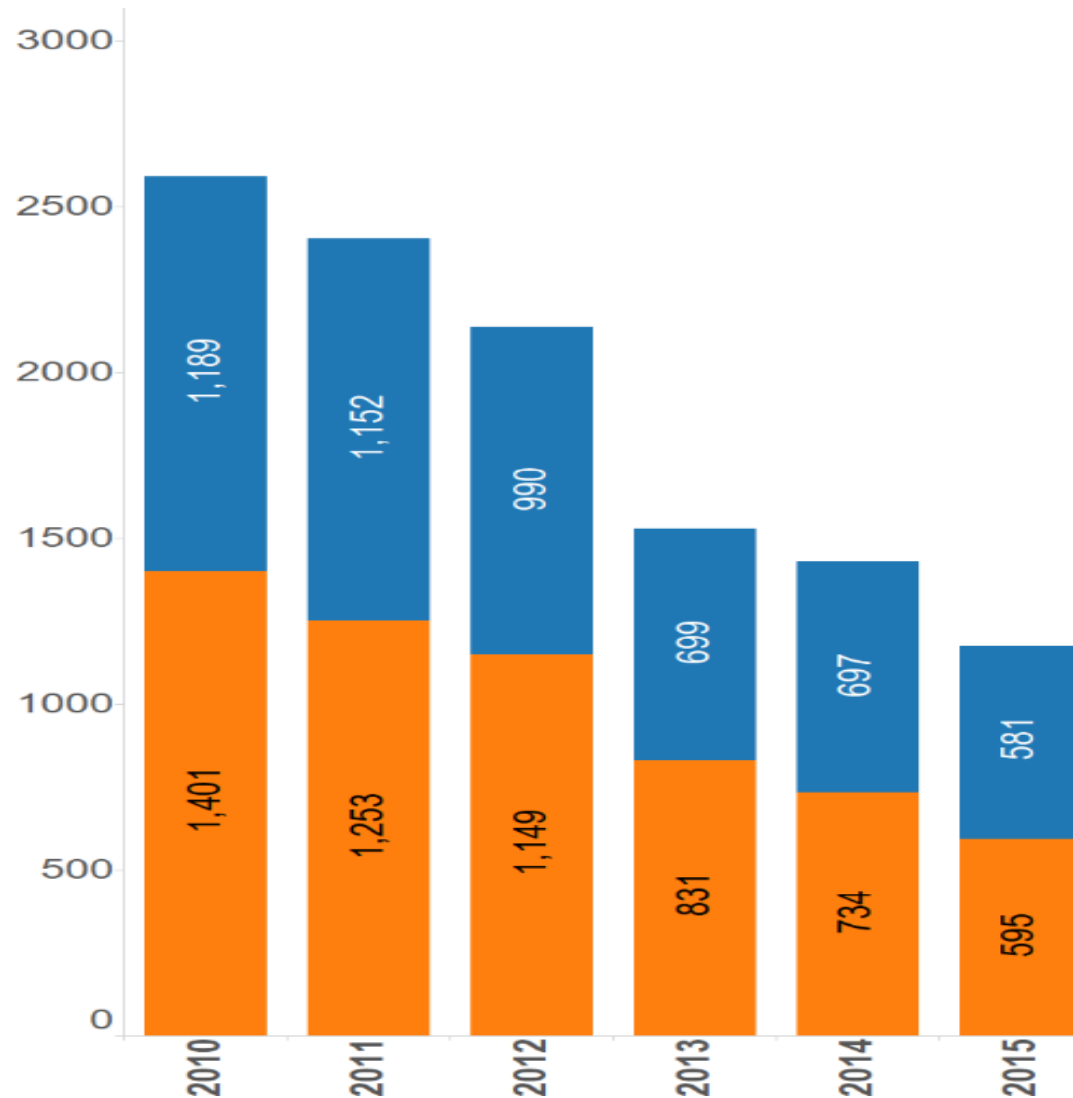
# 2015 DWI Arrests by Month



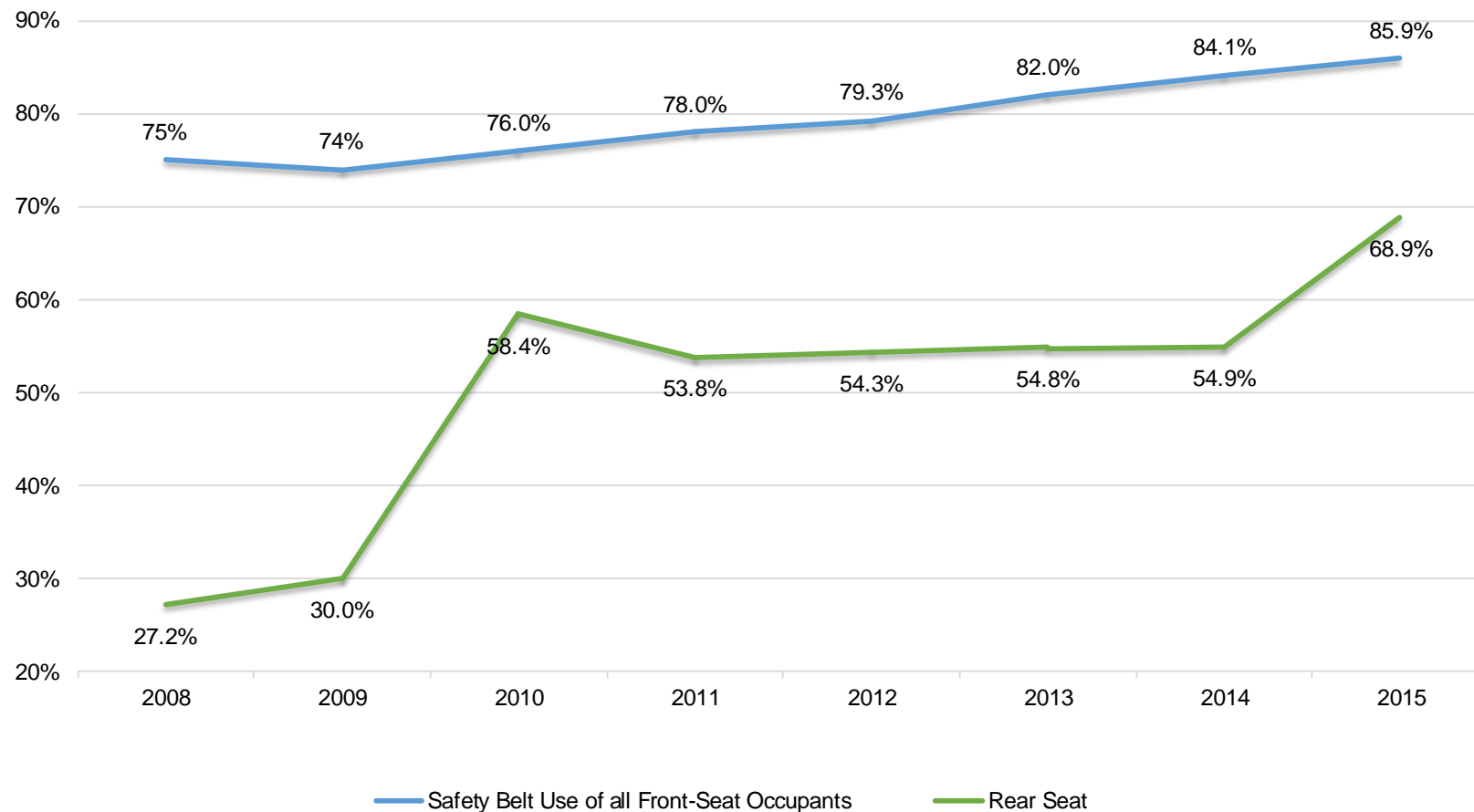
10-27-2016



# DWI Driver Age <21

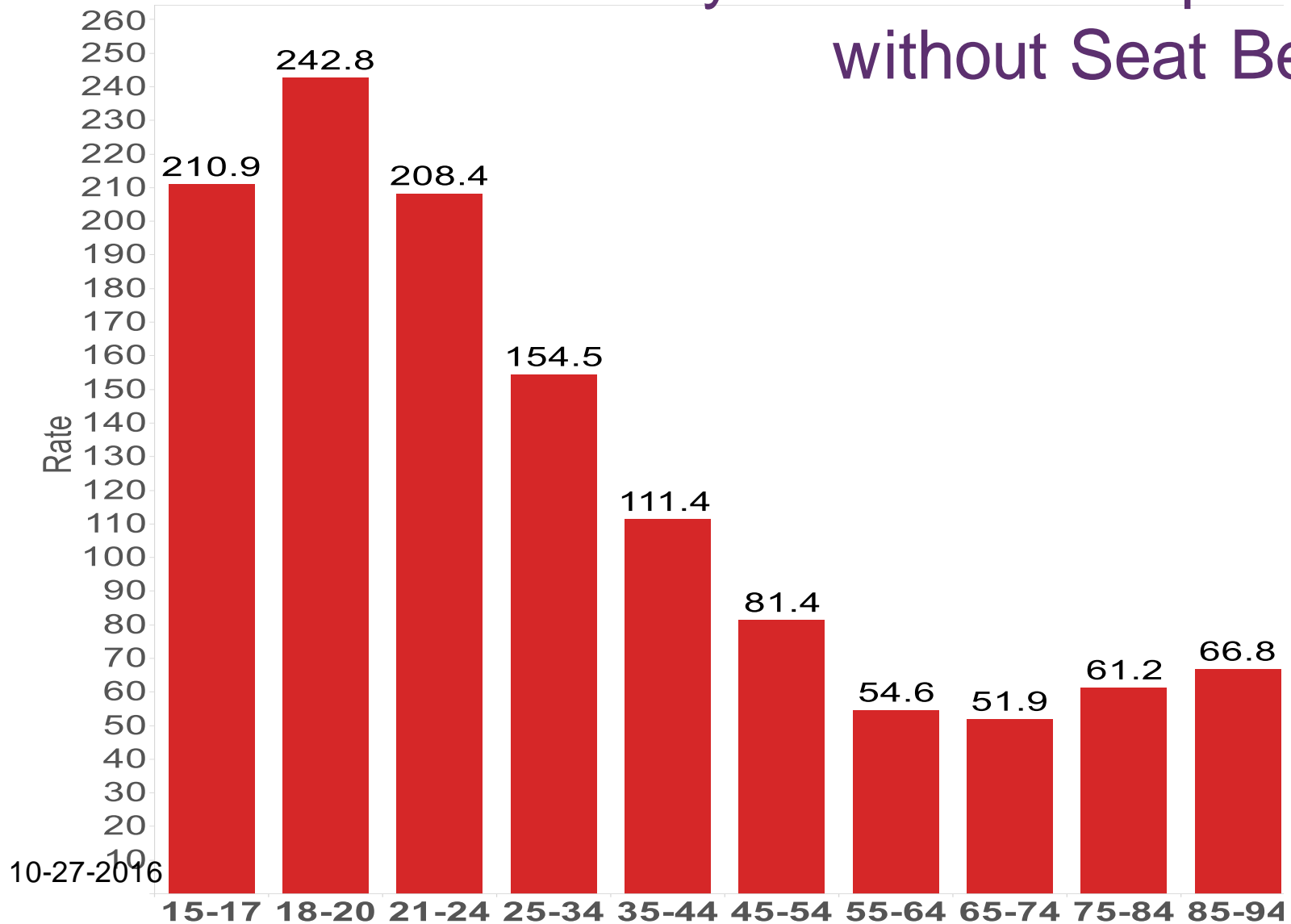


# Seat Belt Use





# Fatality Rate for Occupants without Seat Belt

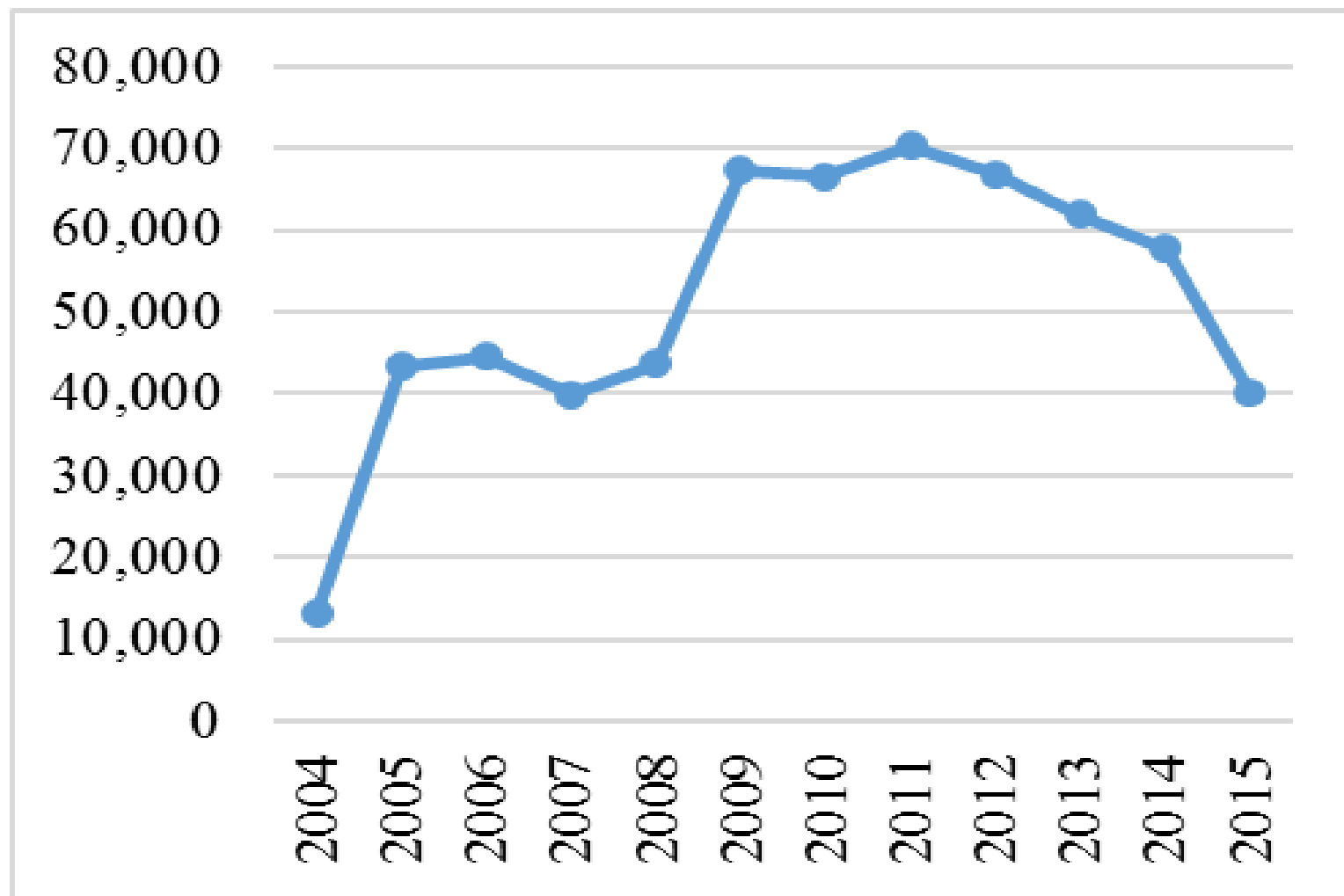


10-27-2016





# OMV Recorded Seat Belt Violations by Year

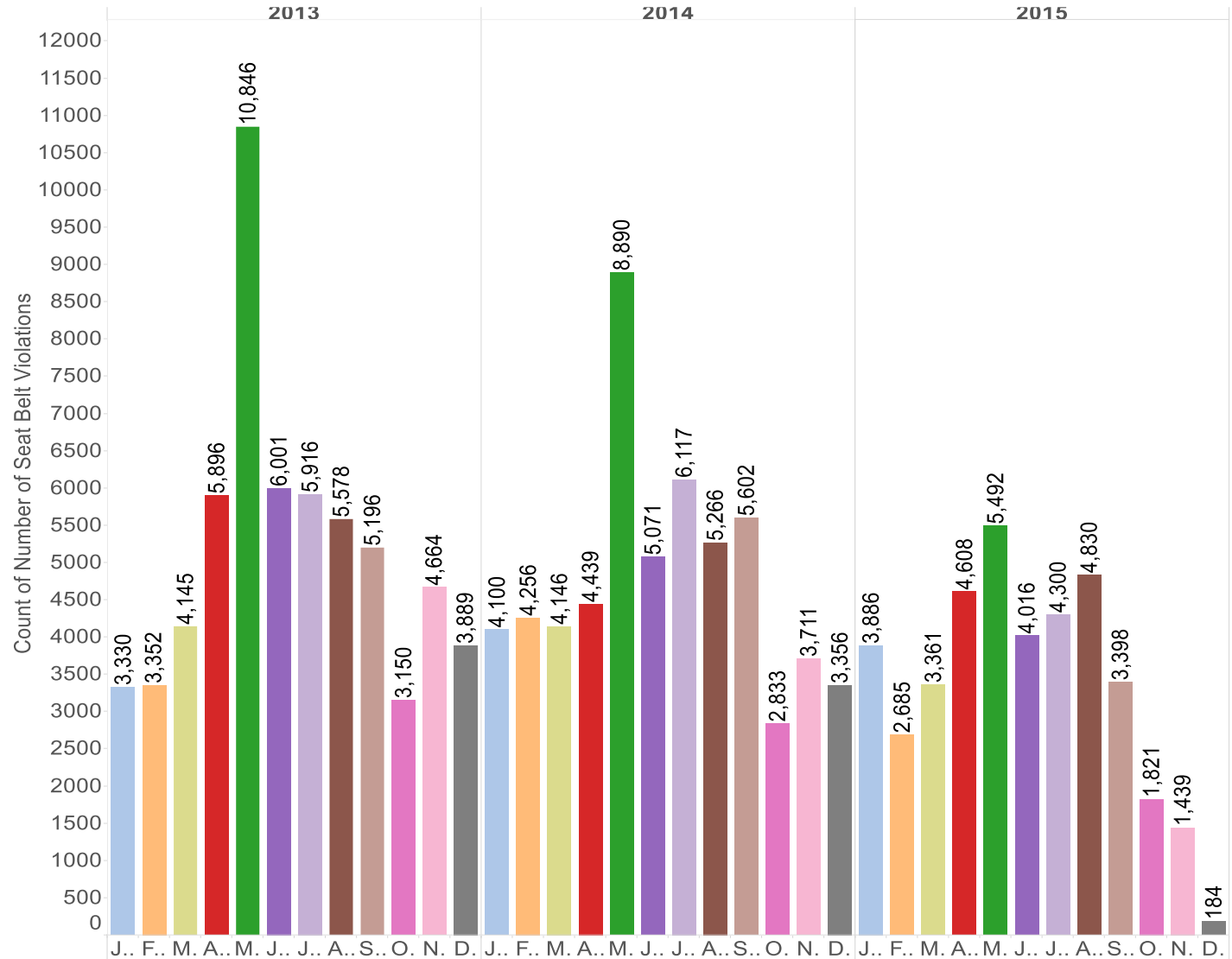




# OMV Recorded Seat Belt Violations by Month and Year

## Month of DOV

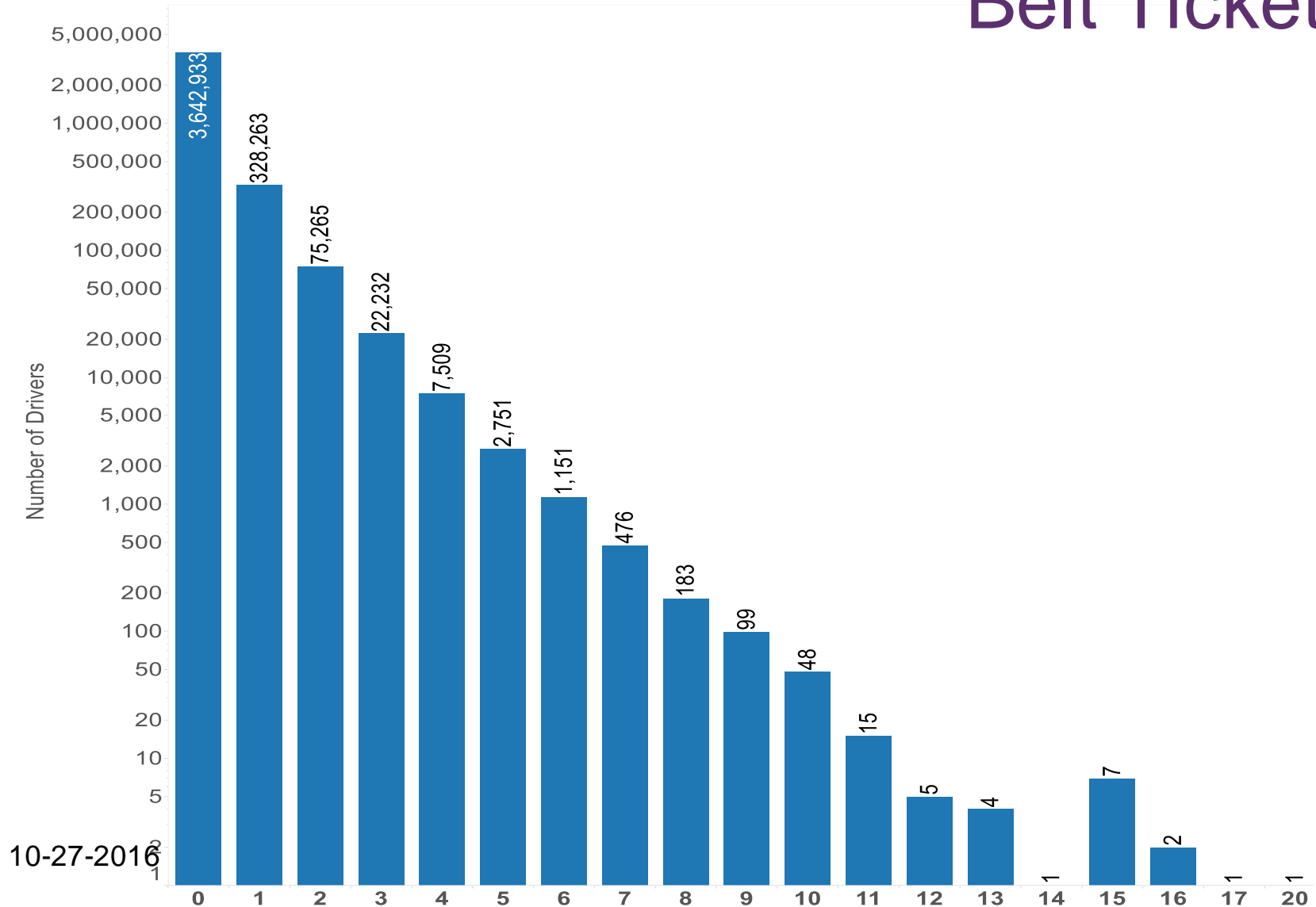
- January
- February
- March
- April
- May
- June
- July
- August
- September
- October
- November
- December



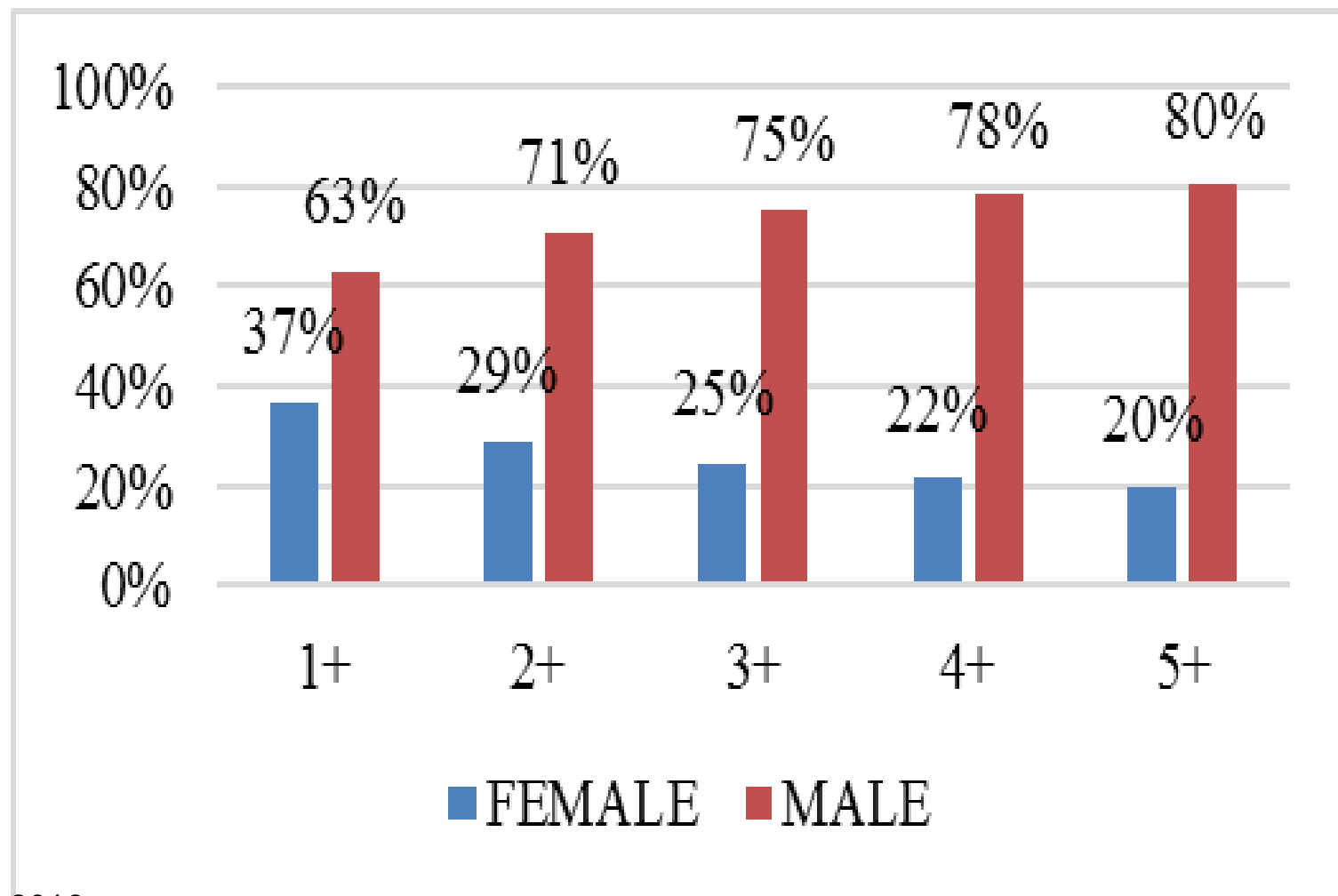
10-27-2016



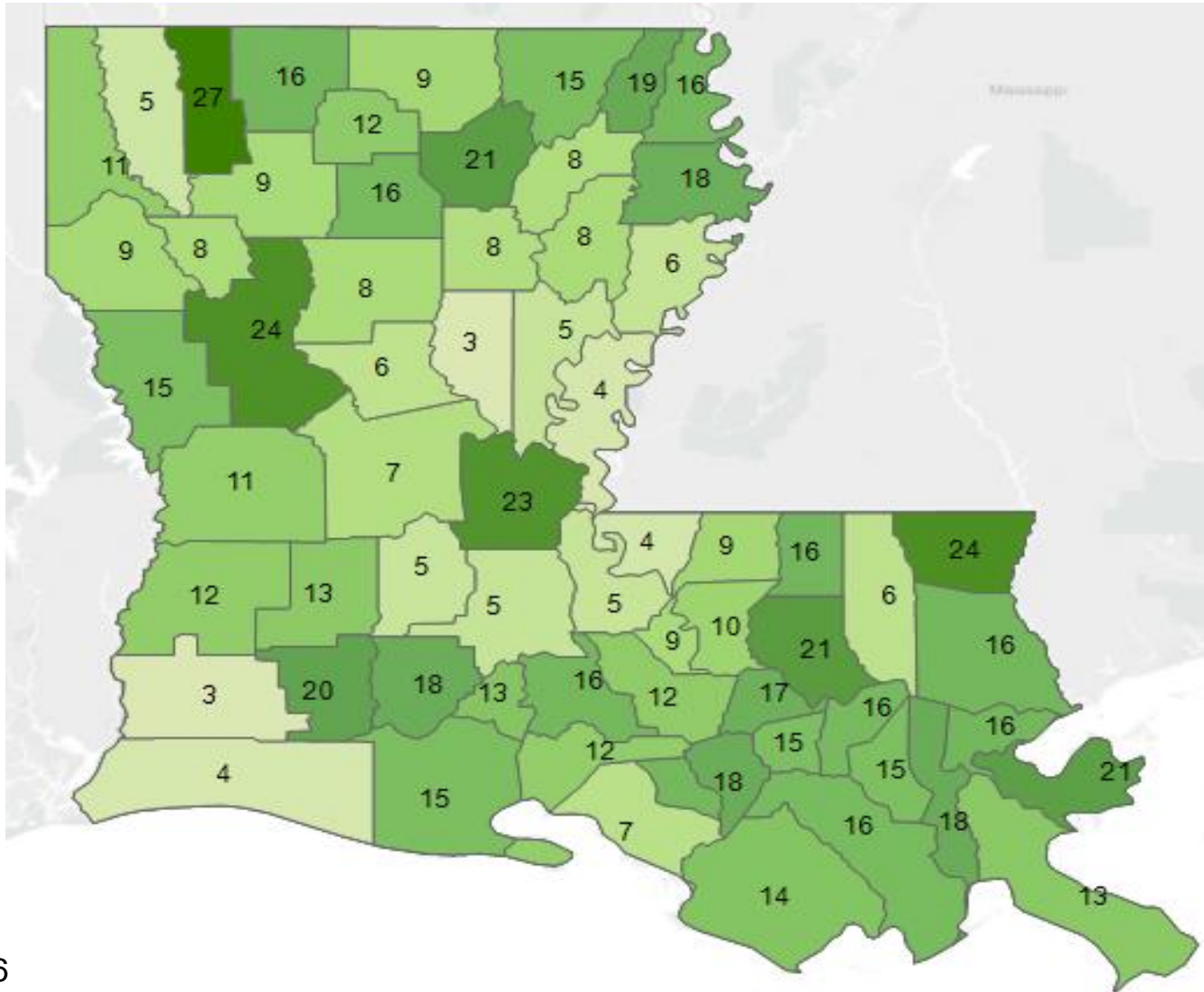
# Frequency of Number of Seat Belt Tickets



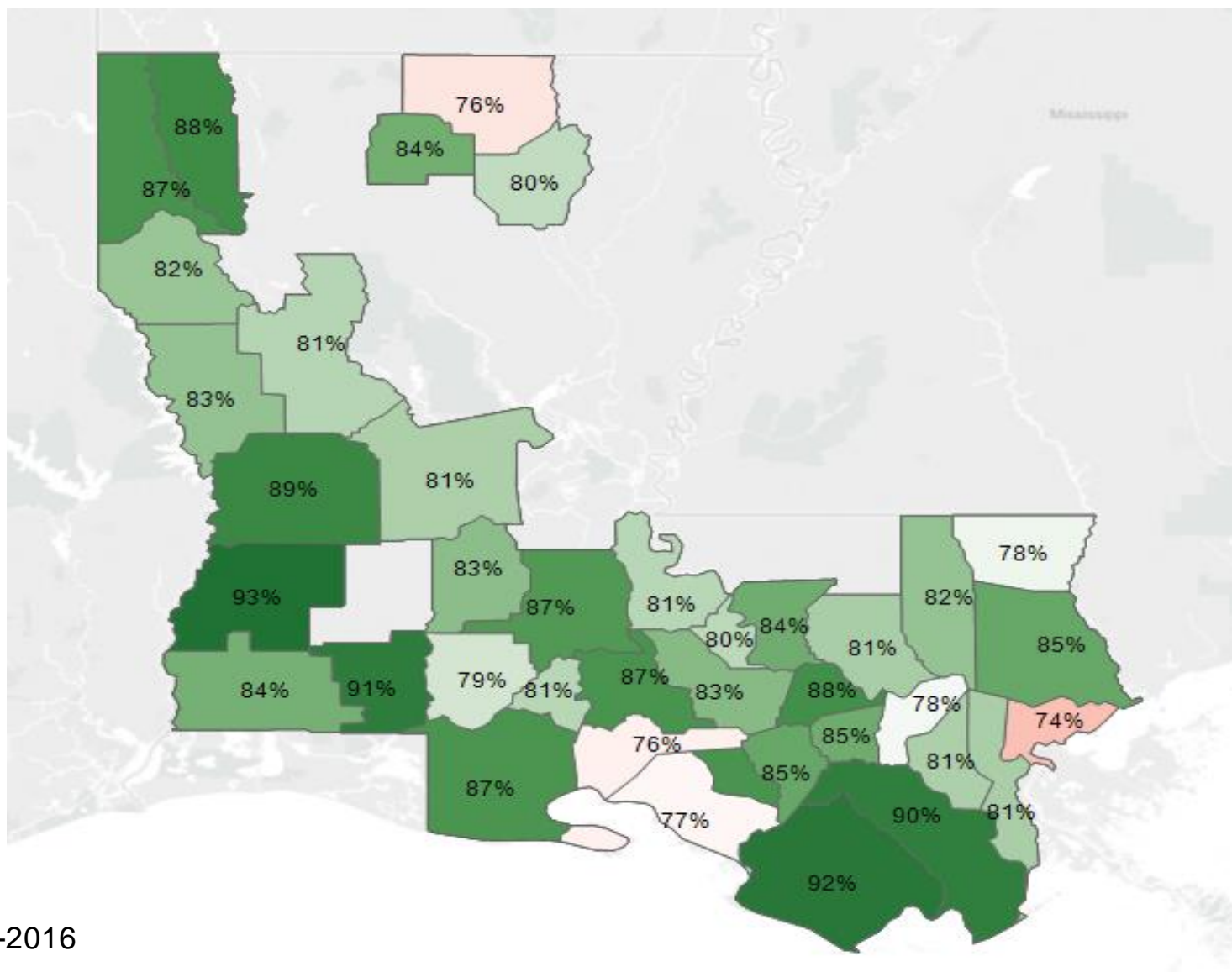
# Number of Seat Belt Tickets by Gender



## Rate (per 1,000 Licensed Drivers) of Recorded Seat Belt Violations by Parish



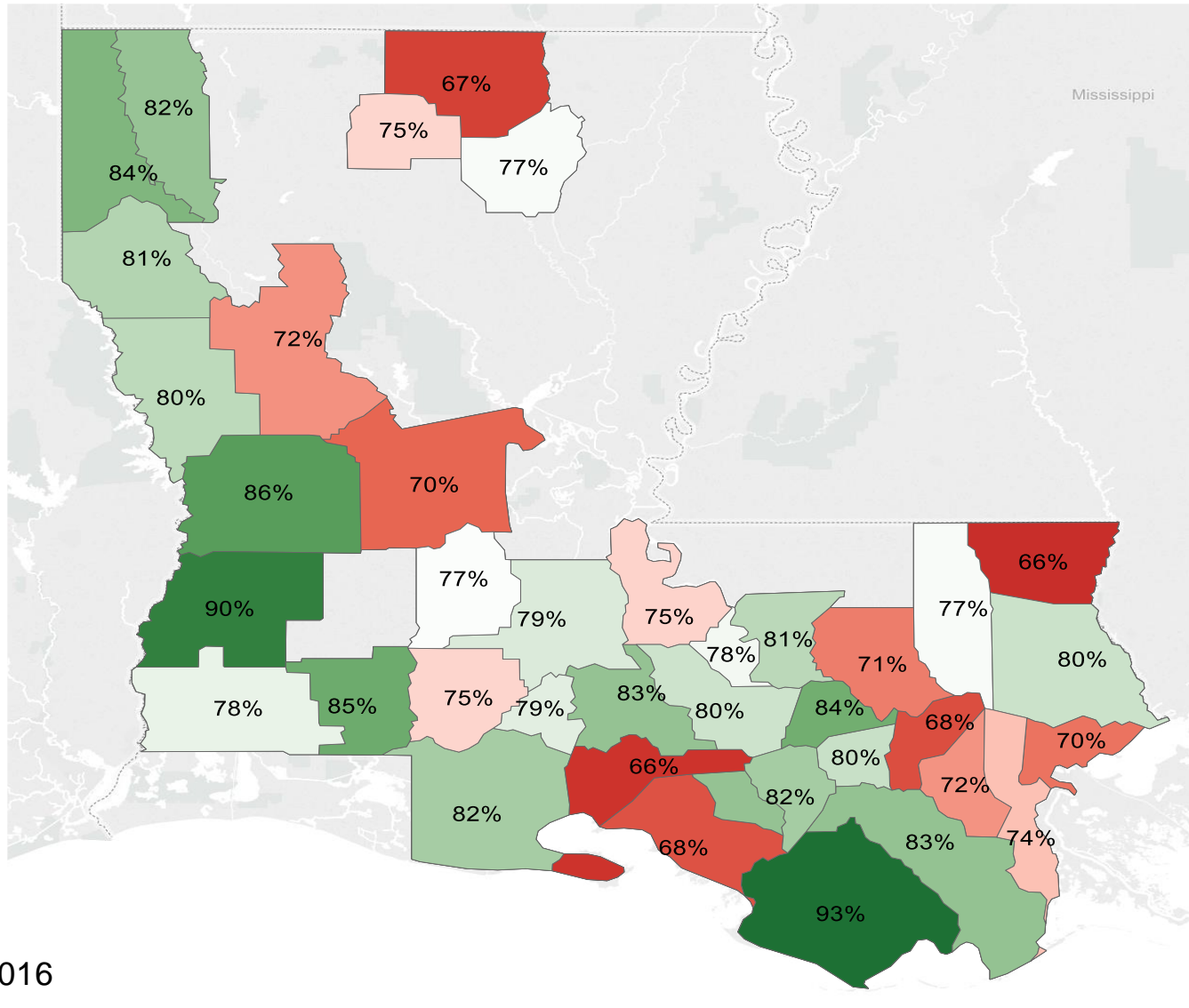
# Belt Use for Front-Seat Occupants 2013-2015



10-27-2016



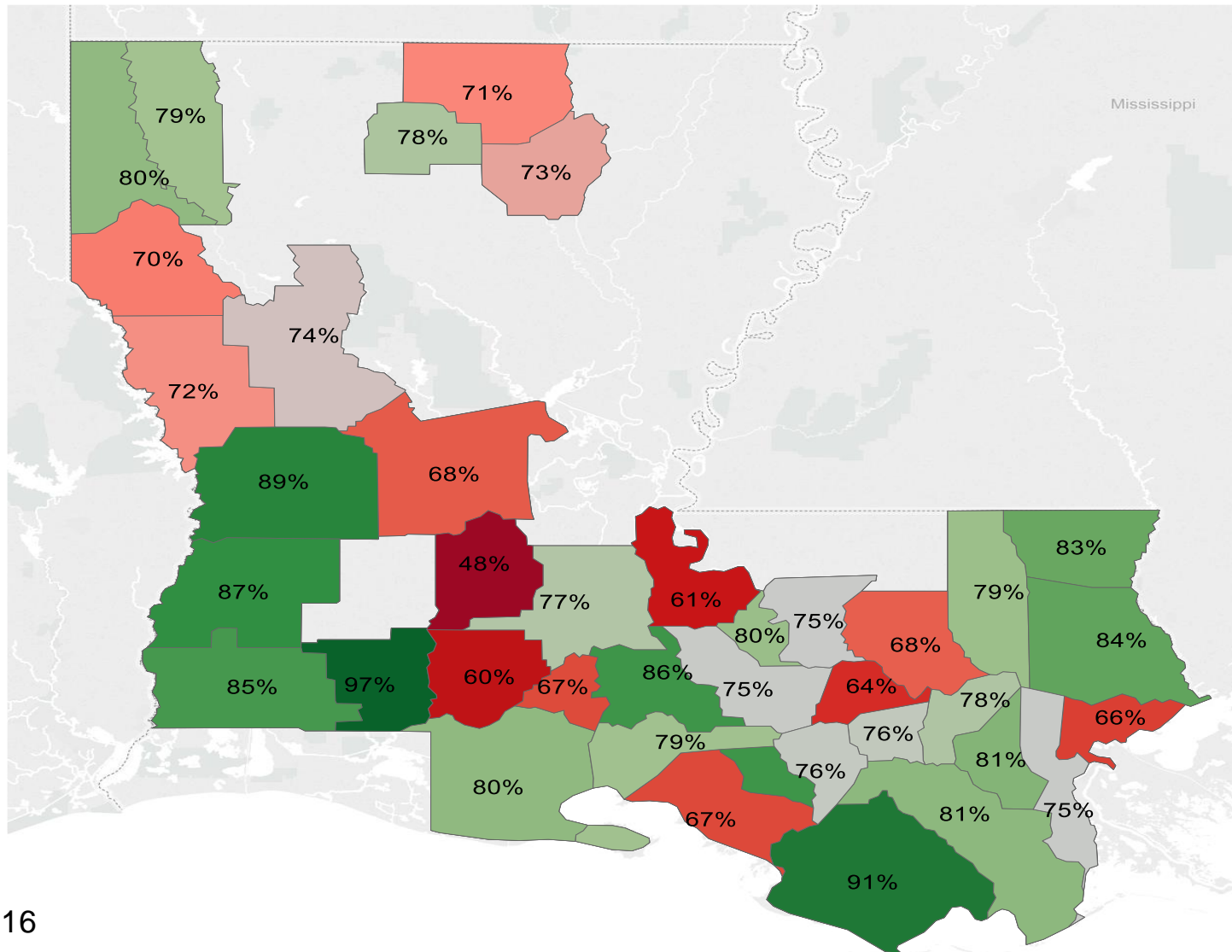
# Belt Use in Pickup Trucks 2013-2015 (Front Seats)







# Belt Use of African American 2013-2015 (Front Seats)







# Cost of Crashes

Type	Average Cost per Person	Injuries	Total Cost by Injury Category
Fatality	\$1,506,363	752	\$1,132,784,645
Severe Injuries	\$390,024	1,386	\$540,572,685
Moderate Injuries	\$114,422	12,693	\$1,452,354,130
Complaint Injuries	\$24,829	64,591	\$1,603,737,044
Person - No Injury	\$4,774	373,384	\$1,782,609,893
Property Damage	\$6,623	320,542	\$2,122,898,379
Grand Total Cost		773,348	\$8,634,956,776
Cost per licensed Driver			\$2,919
Licensed Drivers			2,958,000
Percent Increase			4.9%

10-27-2016