

1993
LOUISIANA
TRAFFIC RECORDS
DATA REPORT



LOUISIANA HIGHWAY SAFETY COMMISSION

P.O. BOX 66336

BATON ROUGE, LOUISIANA

(504) 925-6991

This public document was published at a total cost of \$1,840.00. One thousand, three hundred (1,300) copies of this public document were published in this first printing at a cost of \$1,840.00. The total cost of all printings of this document, including reprints, is \$1,840.00. This document was published for the Louisiana Department of Public Safety and Corrections, Louisiana Highway Safety Commission, Post Office Box 66336, Baton Rouge, Louisiana 70896 by Bourque Printing, Inc., Post Office Box 45070, Baton Rouge, LA 70895-4070 to inform Louisiana citizens and public officials about the magnitude of the highway safety problem in the state. This material was printed in accordance with the standards for printing by state agencies established pursuant to R.S. 43:31.

1993
LOUISIANA
TRAFFIC RECORDS
DATA REPORT



LOUISIANA HIGHWAY SAFETY COMMISSION

P.O. BOX 66336

BATON ROUGE, LOUISIANA

(504) 925-6991

TABLE OF CONTENTS

PAGE

DEFINITIONS.....	1
TRAFFIC CRASH FACTS.....	3
LOUISIANA'S NATIONAL STANDING.....	5
DEATH RATES/VEHICLE MILES TRAVELED.....	6
INJURIES/INJURY RATE.....	7
PROPERTY DAMAGE ONLY CRASHES.....	8
CRASHES/FATAL CRASHES BY MONTH.....	9
CRASHES/FATAL CRASHES BY DAY OF WEEK.....	10
WEATHER CONDITIONS/ROAD SURFACE CONDITION.....	11
TYPE OF VEHICLE.....	12
GENERAL INFORMATION.....	13
FATAL & INJURY CRASHES/FATAL CRASHES/FATALITIES/ ALCOHOL FATALITIES.....	14
FATAL & INJURY CRASHES - URBAN AND RURAL.....	15
FATAL & INJURY CRASHES - ALCOHOL AND SPEED.....	16
FATAL & INJURY CRASHES - SPEED INVOLVED CRASHES.....	17
INTERSTATE ROADWAYS.....	18
FATAL & INJURY CRASHES - DRIVERS HAD BEEN DRINKING/SPEEDING.....	19
FATAL CRASHES - DRIVERS HAD BEEN DRINKING/SPEEDING.....	20
FATAL & INJURY CRASHES/FATAL CRASHES - ALL DRIVERS BY AGE.....	21
BLOOD ALCOHOL CONCENTRATIONS FOR DRIVERS/PEDESTRIANS TESTED IN FATAL AND INJURY CRASHES.....	22
FATAL & INJURY CRASHES/FATAL CRASHES - INVOLVING COMMERCIAL VEHICLES.....	23
HOLIDAY PERIODS.....	24
SAFETY BELT/CHILD RESTRAINT USAGE.....	25
FATAL DRIVERS BY AGE/SAFETY BELT USE.....	26
FATAL OCCUPANTS BY AGE/SAFETY BELT USE.....	27
FATAL PEDESTRIANS BY AGE/CONDITION OF PEDESTRIAN.....	28
FACTS ABOUT DRIVERS 55 AND ABOVE.....	29
BICYCLE CRASHES BY AGE.....	30
MOTORCYCLE CRASHES - RIDERS.....	31
TRAIN CRASHES.....	32
EMERGENCY MEDICAL SERVICES - AVERAGE RESPONSE TIMES.....	33
POPULATION, LICENSED DRIVERS AND REGISTERED VEHICLES.....	34
LHSC FATAL AND INJURY ACCIDENT DATA.....	35
1993 YOUTH TRAFFIC CRASH DATA.....	53
1993 AAA DIGEST OF MOTOR LAWS SUPPLEMENT.....	68

DEFINITIONS

The following special terms are used throughout the traffic safety community and some may be found throughout this report.

ALCOHOL INVOLVED CRASH (AIC) - Any CRASH in which a DRIVER or PEDESTRIAN had been drinking as indicated by the crash report.

COLLISION TYPE - The category which best describes the general type of collision which was the first event.

CRASH (TRAFFIC) - An unintended event that causes a death, injury or damage and involves a MOTOR VEHICLE on a TRAFFICWAY. (This book includes only traffic crashes which have resulted in a DEATH or INJURY to one or more persons. CRASHES which have caused only vehicle or property damage are not included.)

DEATHS (FATALITIES) - Those persons who have died within 30 days of a CRASH as a result of INJURIES sustained in that CRASH.

DRIVER - A person who is in actual physical control of a VEHICLE or who was in control until control was lost. (A PEDALCYCLIST who is in control is considered a DRIVER.)

DRIVER CONDITION - The category which best describes the condition of a DRIVER at the time of the CRASH.

FATAL ACCIDENTS - Those CRASHES in which there was one or more DEATHS.

FATAL AND INJURY (F&I) CRASH - The CRASHES in which there was an INJURY or a DEATH.

INJURY - Bodily harm to a person as a result of a CRASH. INJURIES do not include DEATHS.

INTERSECTION CRASHES - Those crashes which occur at or within 100 feet of an intersection.

KILLED - A DEATH as a result of a CRASH.

LIGHT TRUCKS - MOTOR VEHICLES such as pickups, vans, blazers, and panel trucks.

LICENSED DRIVER - A person who is licensed by a state to operate a MOTOR VEHICLE on public roadways.

LOCATION TYPES - Where the CRASH occurred (business, residential, etc.)

INTRODUCTION

The 1993 LOUISIANA TRAFFIC RECORDS DATA REPORT represents an important element of Louisiana's traffic safety program. The exact nature of this data is aimed at assisting the various professionals involved in traffic safety by presenting to them where they can best concentrate their safety efforts.

This report is a valuable resource for news media, legislators, medical personnel, researchers, law enforcement agencies, judicial personnel, insurance companies, businesses, students and persons involved in traffic safety activities. Through careful analysis of this data, relevant information can be learned about crashes, vehicles, drivers and roadways. Solutions can be found -- laws can be introduced, safety programs can be implemented, highway improvements can be made and enforcement can be increased.

When analyzing a particular table or chart it is important to note whether referencing the number of crashes, the number of people or the number of vehicles.

Requests for further information or additional copies of this report should be addressed to:

Department of Public Safety & Corrections
Louisiana Highway Safety Commission
Post Office Box 66336
Baton Rouge, LA 70896
Phone: (504) 925-6991

DEFINITIONS (CONTINUED)

MOTOR VEHICLES - Any motorized (mechanically or electrically powered) VEHICLE not operated on rails.

OCCUPANT - A person who is in or on a VEHICLE.

OTHER OBJECT - An object in the roadway which is not part of the roadway (such as rocks, fallen trees, debris).

PASSENGER - Any OCCUPANT of a VEHICLE other than its DRIVER.

PEDALCYCLE - A nonmotorized VEHICLE propelled by pedalling such as a bicycle, tricycle, unicycle, or pedalcar.
(The PEDALCYCLE is counted as a VEHICLE and the OCCUPANTS are counted as DRIVERS and PASSENGERS.)

PEDESTRIAN - A person who is INJURED or killed in a CRASH and who was not in or on a VEHICLE.

PRIMARY CONTRIBUTING FACTOR - The main cause of a CRASH.

RANK - All areas that are unincorporated and incorporated areas with less than 2,500 population - except for Jefferson Parish which is considered all URBAN.

TRAFFICWAY - A land way open to the public as a matter of right or custom for moving persons or property from one place to another. This does not include land ways which are under construction or closed and which have been marked by signing or barriers.

TRUCK COMBINATION - A motor vehicle consisting of a TRUCK TRACTOR which has a trailer or semitrailer attached.

TRUCK TRACTOR - A motor vehicle consisting primarily of a single motorized device designed for drawing trailers or semitrailers, but not for carrying other property on or in the device. When connected to a trailer or semitrailer, such a device is considered a TRUCK COMBINATION.

URBAN - Any incorporated area with more than 2,500 population and all of Jefferson Parish.

VEHICLE - A device for carrying or transporting persons or things, i.e., cars, trucks, farm equipment, buses, motorcycles, pedalcycles, trains, and recreational vehicles.

VIOLATIONS - The category which best describes the DRIVER'S infringement of MOTOR VEHICLE traffic laws.

TRAFFIC CRASH FACTS

- Nationally motor vehicle crashes are the leading cause of death among Americans 1-34 years old.
- More crashes occur in the urban areas but more fatalities occur in the rural areas.
- The national fatality rate has fallen from 2.6 in 1983 to 1.7 (lowest in history) in 1993. The Louisiana rate, during the same period, fell from 2.8 in 1983 to 2.4 (FARS) in 1993, based on fatality rate per 100 million vehicle miles traveled. Last nationally published ranking based on fatality rates in 1993 showed Louisiana to be number 5.
- Alcohol related fatalities during the same period (1983-93) fell nationally from 56% to 44%. Louisiana alcohol fatalities during this same period have fluctuated between 38% and 43%. The last five years have remained constant around 42%. (The National Highway Traffic Safety Administration's Fatal Accident Reporting System (FARS) shows Louisiana to be at 55% in 1993. (The difference is due to the methodology/statistical model used by FARS in computing alcohol related fatalities).
- National statistics showed 40,115 fatalities in 1993, the second lowest number of deaths since 1961 which was 38,061. In 1961, Louisiana had 779 fatalities and 884 in 1993. Louisiana experienced an all time high of 1,302 fatalities in 1968. Nationally fatalities peaked in 1969 at 56,000. For the last five years, with the exception of 1990 (979 fatalities) Louisiana's fatalities range between 850 and 900.
- National safety belt use has risen from 59% in 1991 to 67% in 1993. Louisiana's has risen from 42% to 48% during the same time period. However, remain below the national average.
- Even at BACs as low as 0.02 percent, alcohol affects driving ability and crash likelihood. The probability of a crash begins to increase significantly at 0.05 percent BAC and climbs rapidly after about 0.08 percent. For drivers with BACs above 0.15 percent on weekend nights, the likelihood of being killed in a single-vehicle crash is more than 380 times higher than it is for non-drinking drivers.
- NHTSA estimates that 941 lives were saved in 1991 by age 21 drinking laws. Since 1982, it is estimated that almost 8,743 lives have been saved in the affected ages by these laws. However, young people under age 21 are still greatly over-represented in alcohol-related crashes and fatalities.

TRAFFIC CRASH FACTS (CONTINUED)

- Recent research indicates that the relative fatality risk for drivers in single vehicle crashes with BACs between 0.05 and 0.09 is more than 11 times greater than for drivers with a zero BAC.
- A BAC level of 0.08 means about four drinks within one hour on an empty stomach for an average male weighing 160 pounds.
- Any impairment, regardless of the BAC can result in an arrest.
- In 1993, there was one person killed every 9 hours and 54 minutes in a traffic crash in Louisiana.
- In 1993, there were 363 people killed in alcohol-related crashes in Louisiana. Every 24 hours and 7 minutes someone dies in an alcohol-related crash in Louisiana.
- In 1993, there were 77,896 people injured in traffic crashes in Louisiana. Every 6 minutes and 42 seconds someone is injured in a traffic crash in Louisiana.
- In 1993, there were 8,373 people injured in alcohol-related crashes in Louisiana. Every 1 hour and 2 seconds someone is injured in an alcohol-related crash in Louisiana.
- Lap and shoulder belts, when used, are the single most effective means for occupants to reduce the risk of death and serious injury in a highway crash.
- In 1992, if every front seat occupant had buckled up, more than 14,000 deaths and several hundred thousand serious injuries nationally would have been prevented by seat belt use.
- The fatalities and injuries that are prevented by safety belt use laws result in significant economic savings to society. In 1990, at a usage rate of about 50%, the societal savings were estimated to be \$3.5 billion. One study pointed out that for persons hospitalized as a result of a traffic crash, their first year medical costs alone totaled nearly \$6.5 billion. Nearly one-third of these costs were borne by government.
- The cost to society of injured crash survivors is 2.2 times more than for fatalities.

1993 TRAFFIC SAFETY FATAL DATA LOUISIANA'S NATIONAL STANDING

~ 5TH in the percent of persons killed in ALCOHOL-RELATED crashes:

Total Killed	Alcohol-Related Deaths	Percent
879	483	54.9
	National Average	43.6%

~ 8TH in PEDESTRIANS killed based on deaths per 100,000 population:

Total Killed	Population	Rate
136	4,295	3.17
	National Rate	2.19

~ 9TH in RAILROAD GRADE CROSSING deaths per 10,000 registered vehicles:

Total Killed	Registered Vehicles	Rate
19	31,780	5.98
	National Rate	2.64

~ 13TH in persons killed in TRAFFIC CRASHES per 100,000 population:

Total Killed	Population	Rate
879	4,295	20.47
	National Rate	15.55

~ 15TH in the percent of persons not using SEATBELTS in fatal crashes:

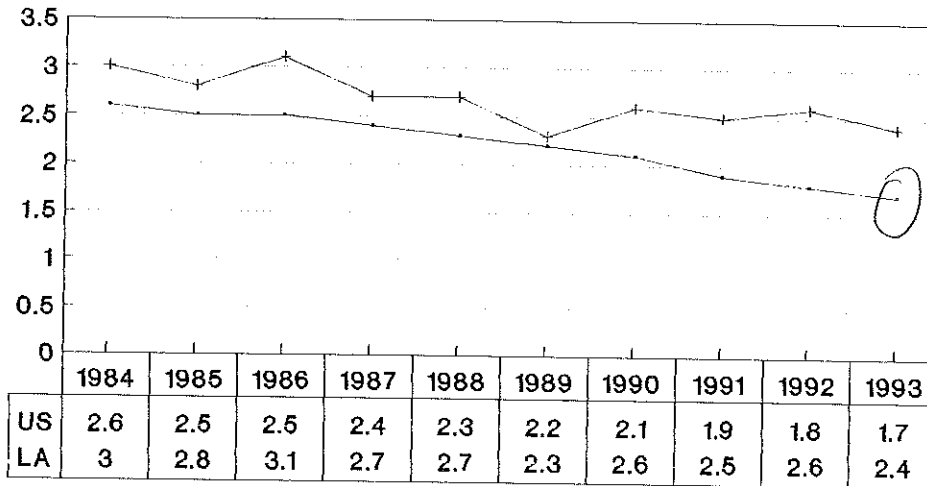
Total Killed	No Restraint Used	Percent
432	275	63.7
	National Average	56.9%

~ TRAFFIC FATALITIES increased by 2 percent from 1992 to 1993 for the nation as a whole. Louisiana showed a decrease of -1 percent.

Source: 1993 Fatal Accident Report System (FARS)
1993 Highway Rail Crossing Accident/Incident
Inventory Bulletin

DEATH RATES

10 Year Rates- LA/US

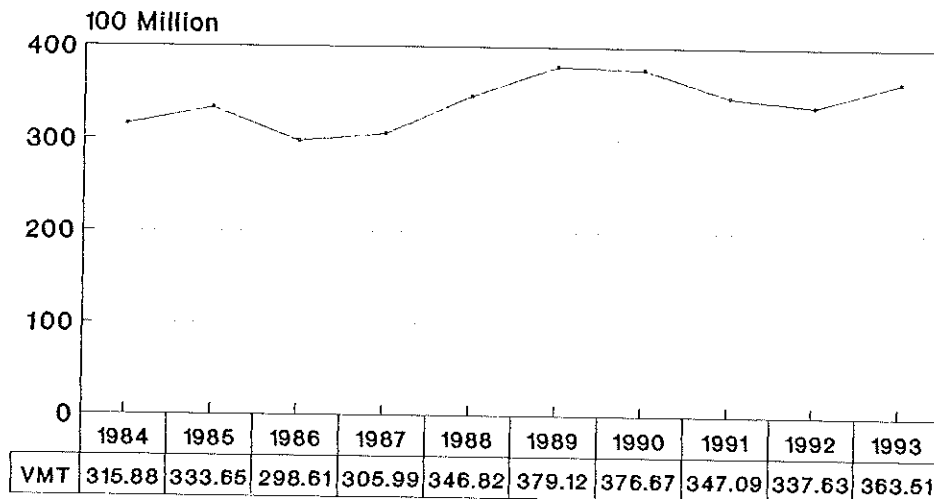


— US - - - LA

RATE95

VEHICLE MILES TRAVELED

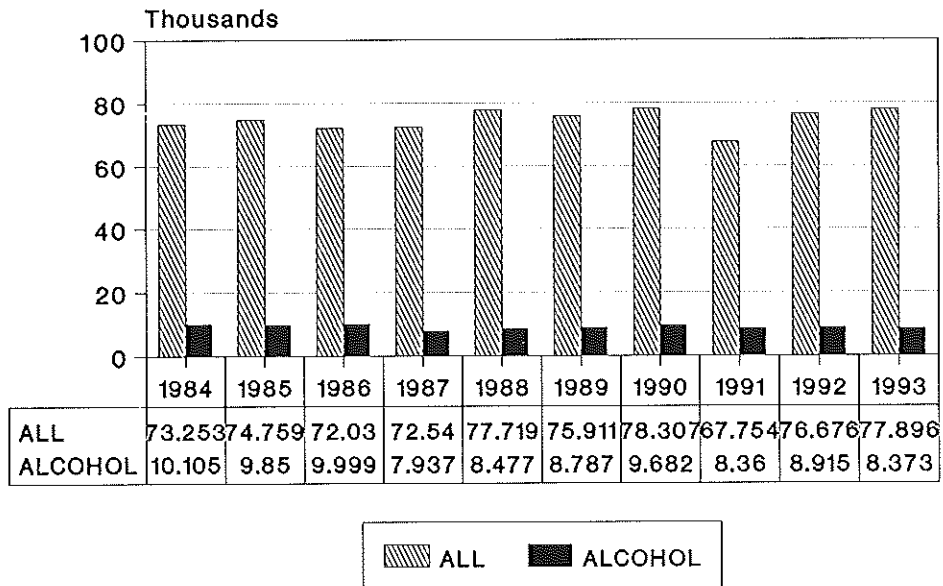
10 Year Trend



— VMT

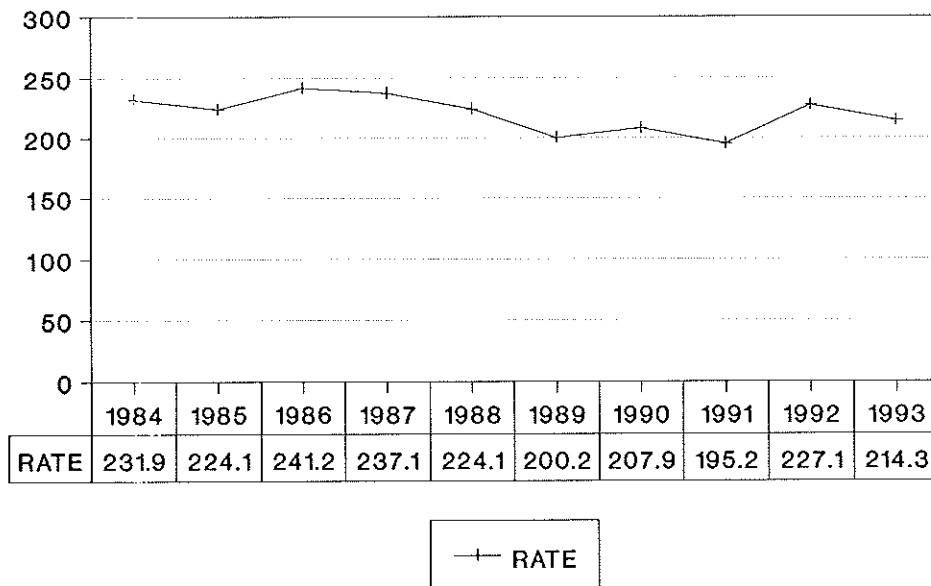
VMT

INJURIES



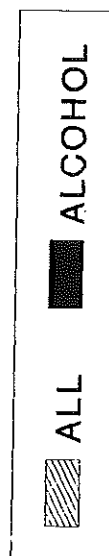
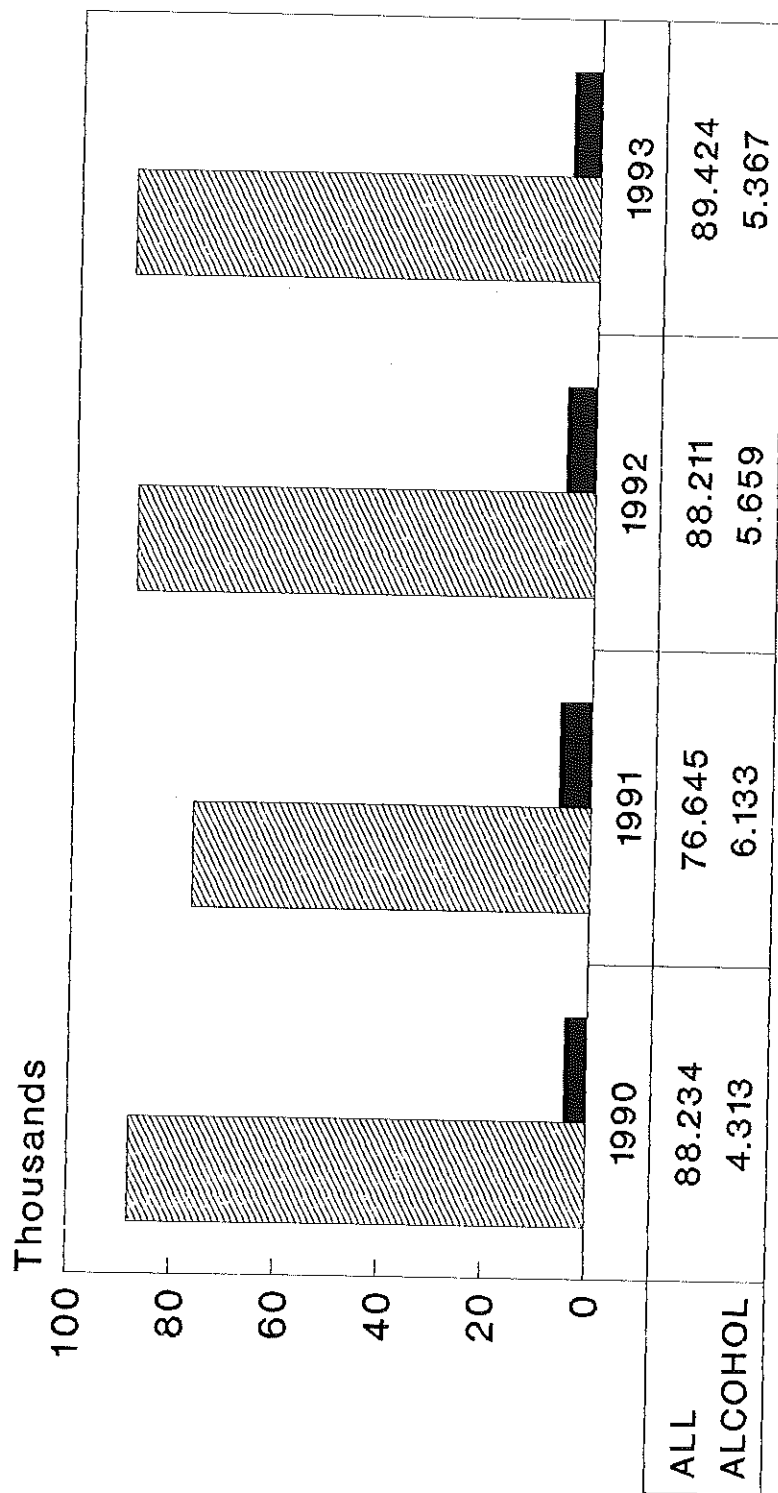
INJURIES

INJURY RATE



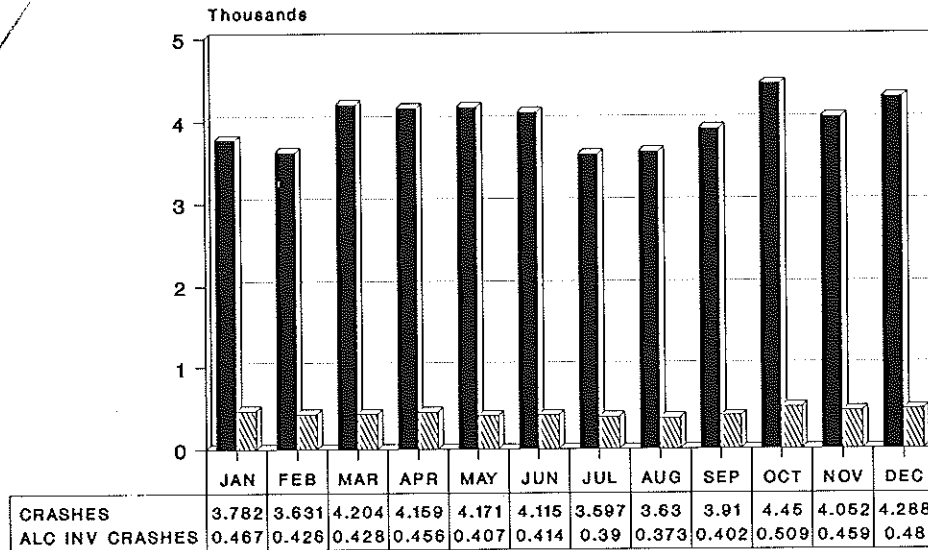
INJURIEB

PROPERTY DAMAGE ONLY CRASHES



PDOS

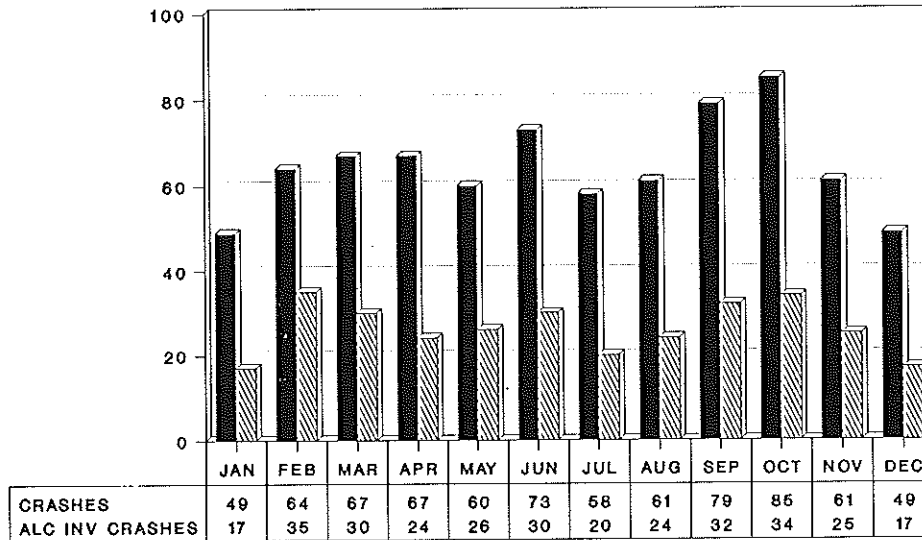
CRASHES BY MONTH 1993



■ CRASHES ▨ ALC INV CRASHES

LHSC FATAL AND INJURY DATA

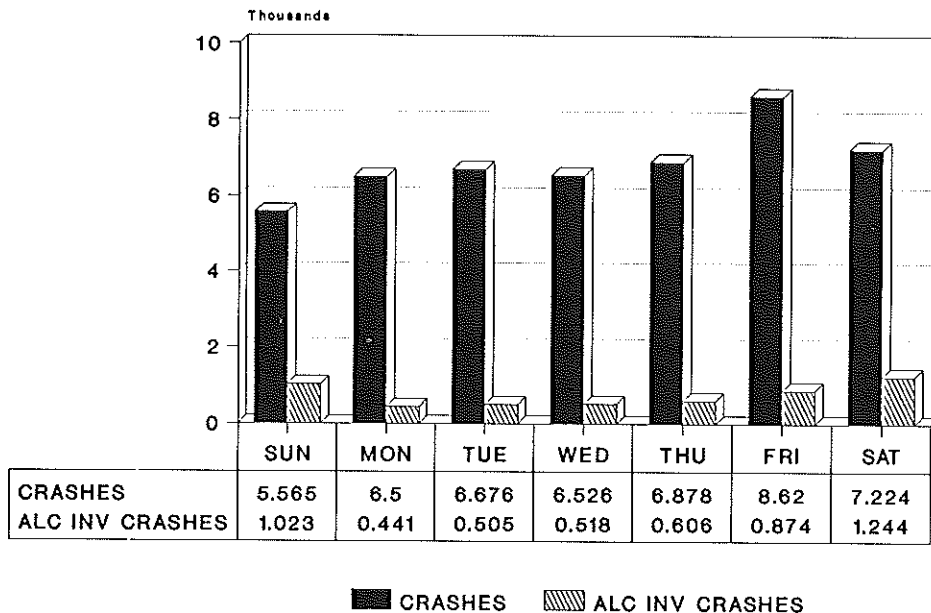
FATAL CRASHES BY MONTH 1993



■ CRASHES ▨ ALC INV CRASHES

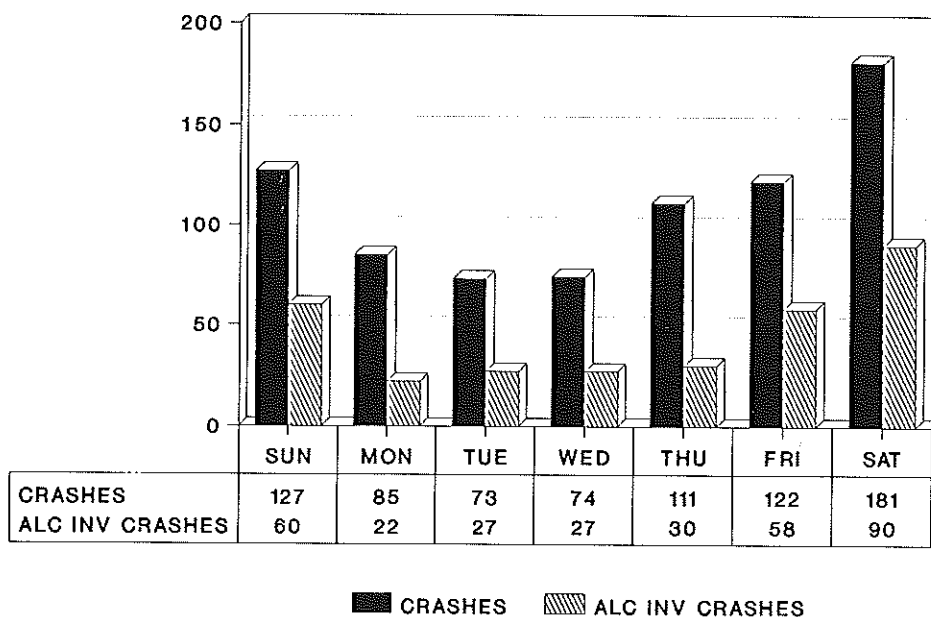
LHSC FATAL AND INJURY DATA

✓ CRASHES BY DAY OF WEEK 1993



LHSC FATAL AND INJURY DATA

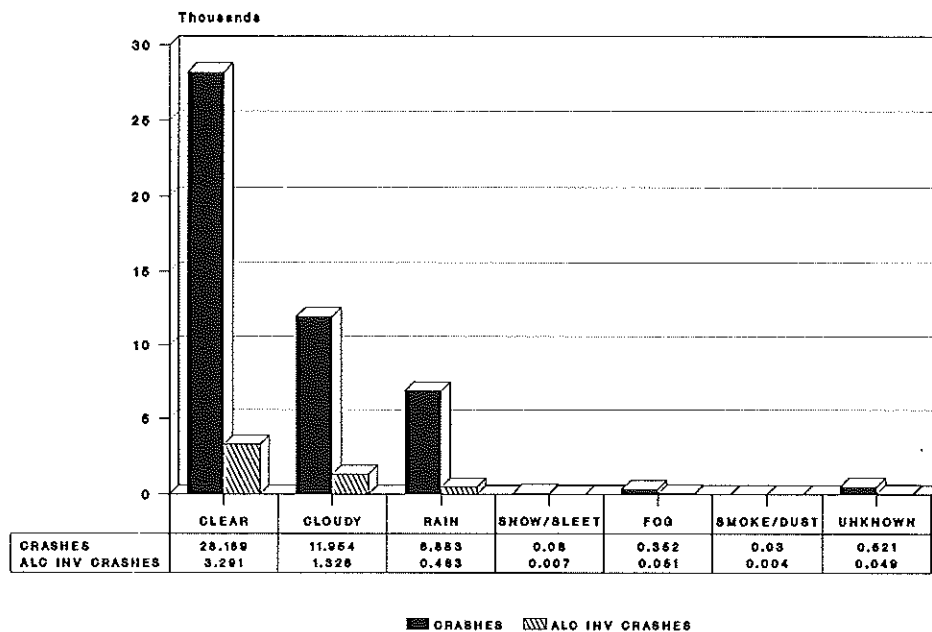
✓ FATAL CRASHES BY DAY OF WEEK 1993



LHSC FATAL AND INJURY DATA

WEATHER CONDITIONS 2

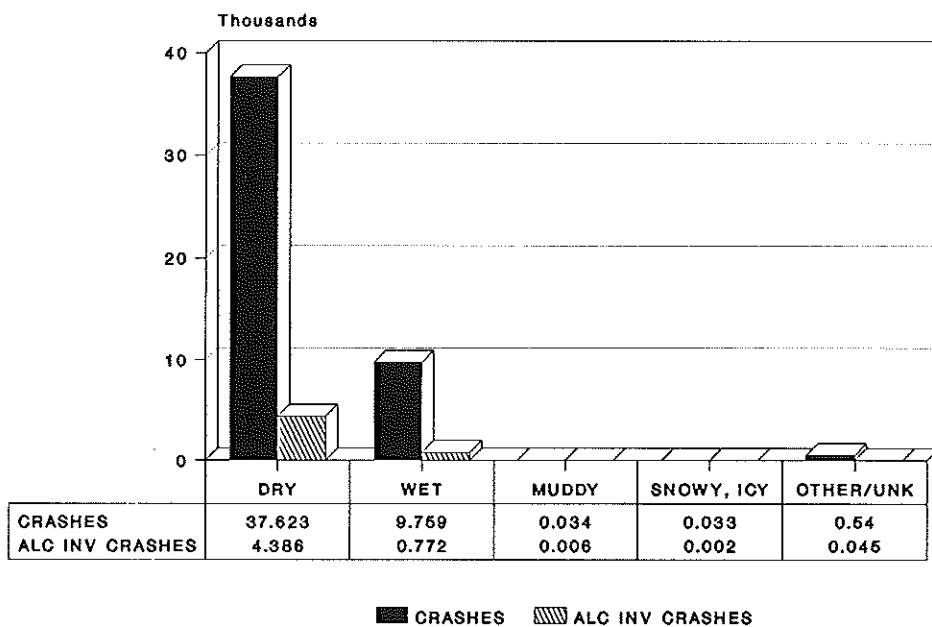
1992



LHSC FATAL AND INJURY DATA

ROAD SURFACE CONDITION

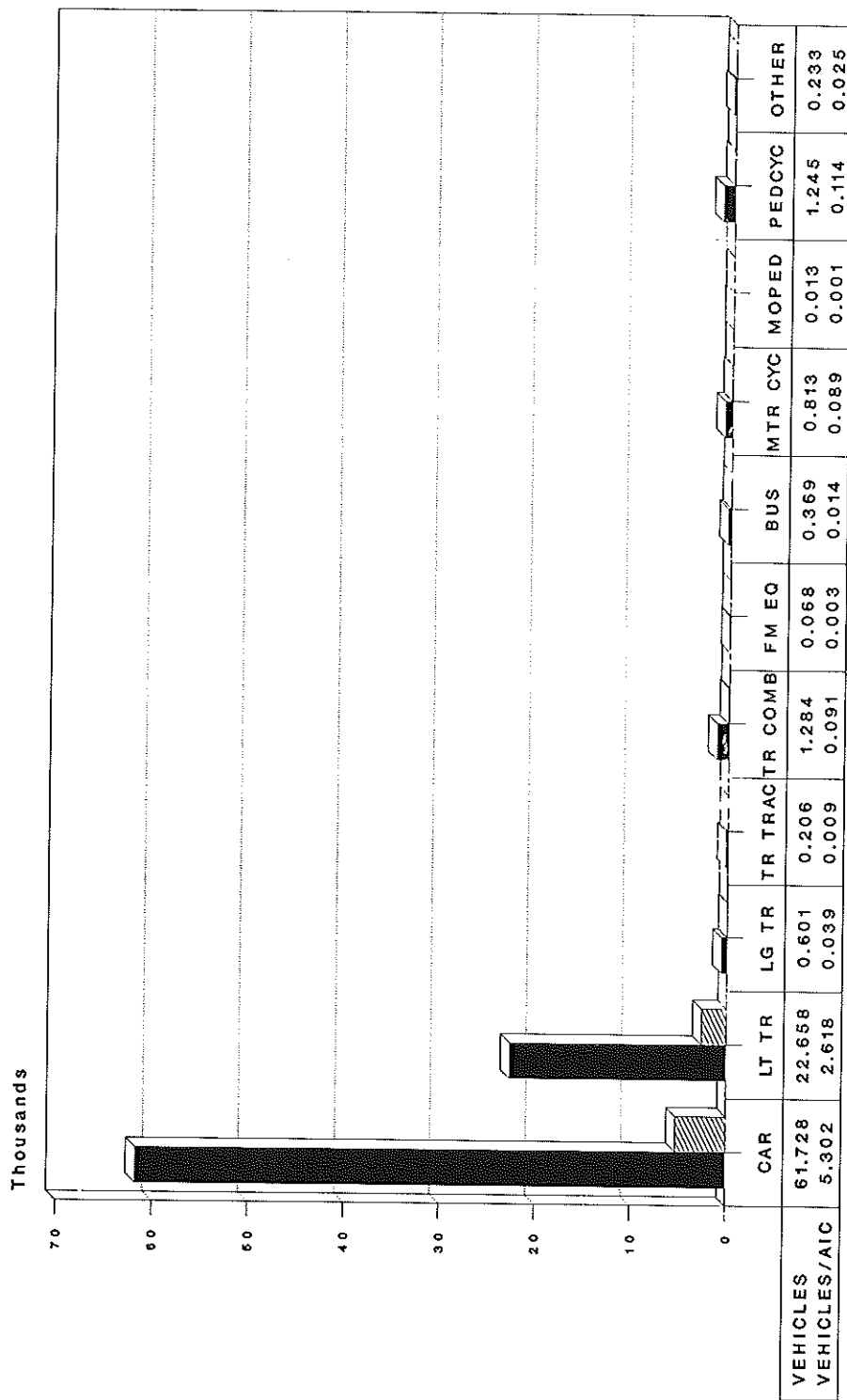
1993



LHSC FATAL AND INJURY DATA

TYPE OF VEHICLE

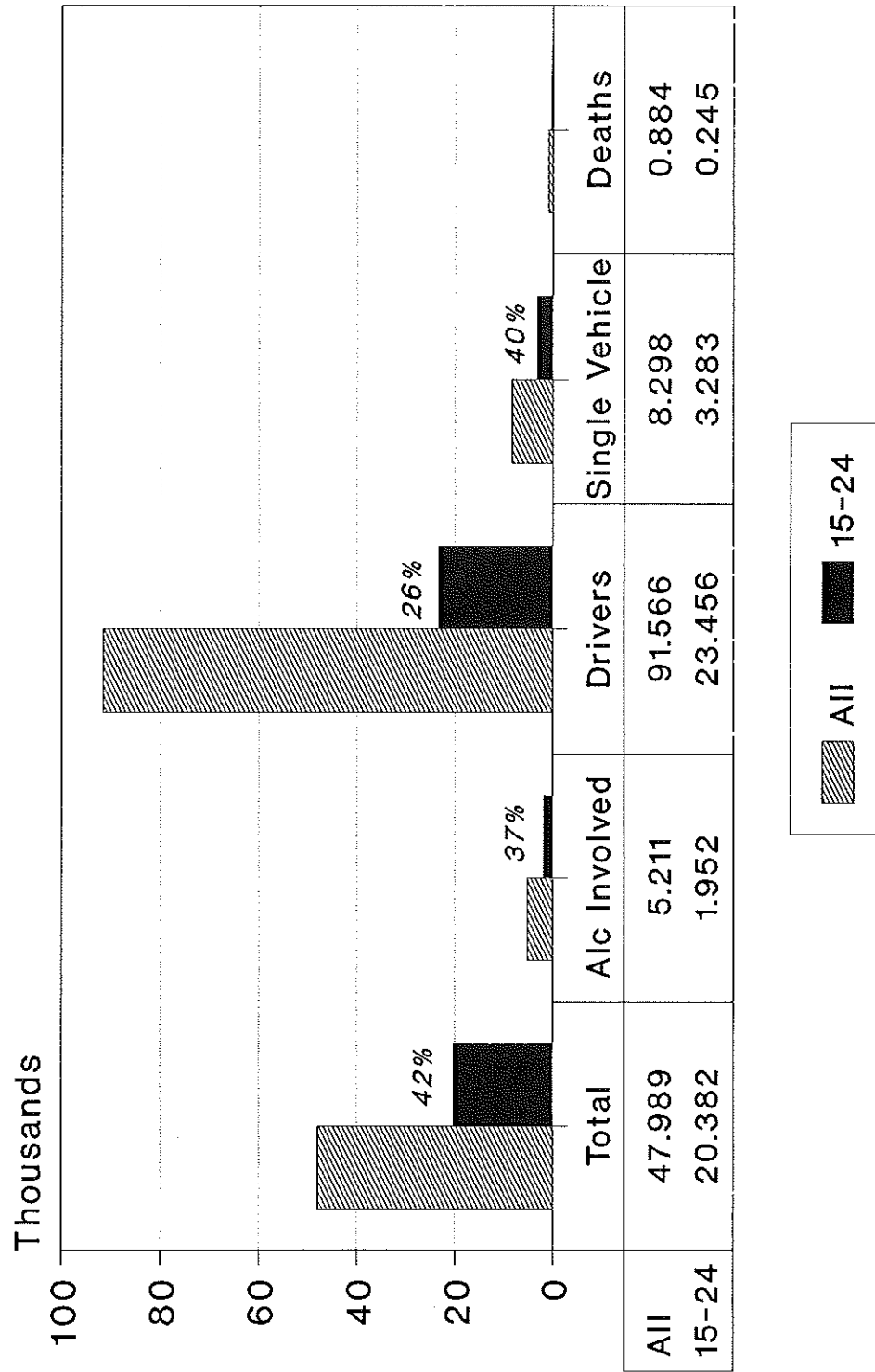
1993



VEHICLES VEHICLES/AIC

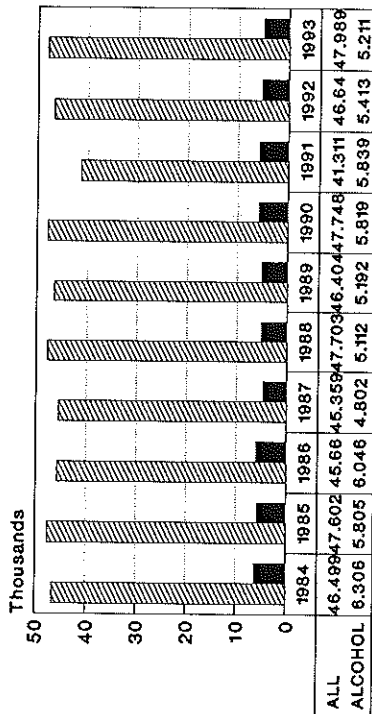
LHSC FATAL AND INJURY DATA

GENERAL INFORMATION



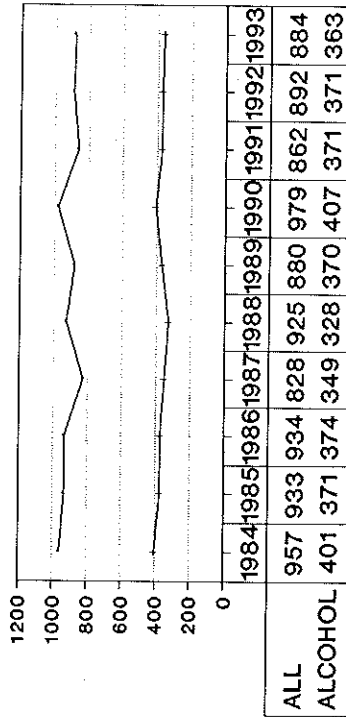
All = All Fatal & Injury Crashes
 15-24 = Crashes Involving 15-24 Drivers
 GENERAL

FATAL AND INJURY CRASHES



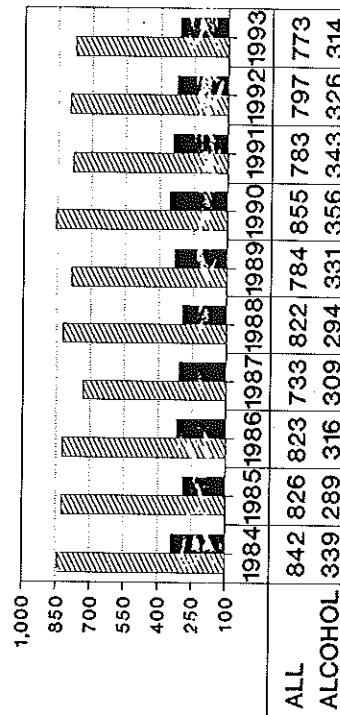
F&I

FATALITIES



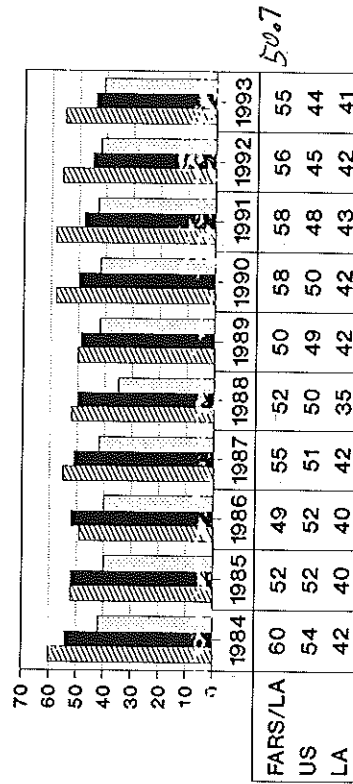
DEAT91

FATAL CRASHES



FATAL

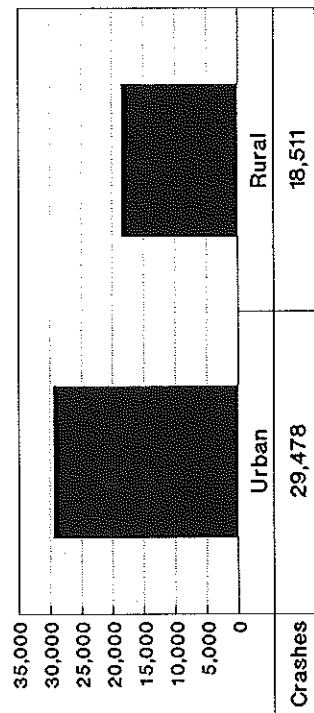
ALCOHOL FATALITIES PERCENT LA/US



DEAT91B

*Data from Fatal Accident Reporting System
U.S. Department of Transportation*

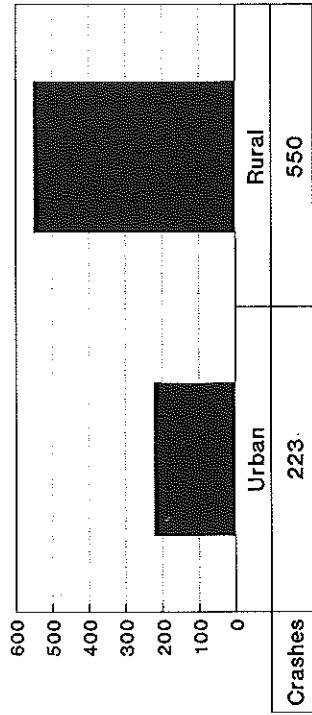
FATAL & INJURY CRASHES Urban and Rural



1993
Crashes

CRASHESM

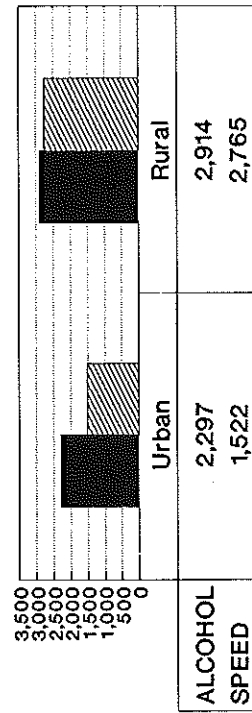
FATAL CRASHES Urban and Rural



1993
Crashes

CRASHESO

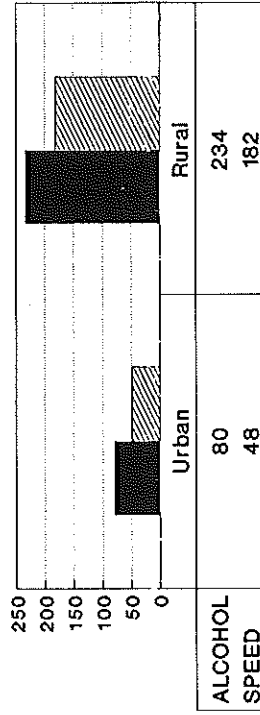
FATAL & INJURY CRASHES ALCOHOL AND SPEED URBAN AND RURAL



1993
ALCOHOL SPEED

CRASHESN

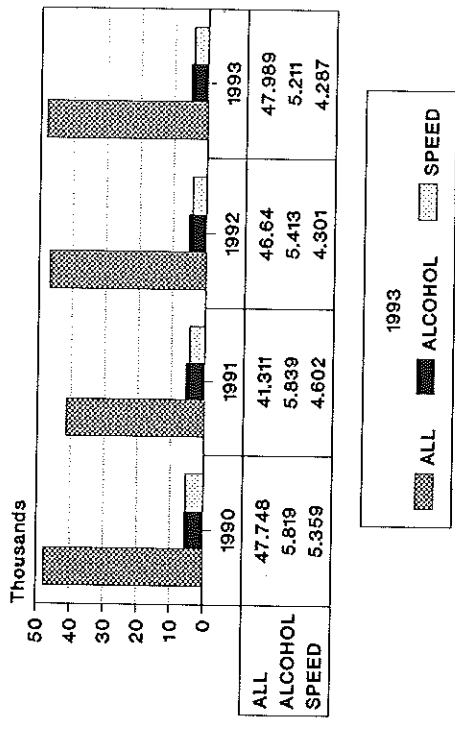
FATAL CRASHES ALCOHOL AND SPEED URBAN AND RURAL



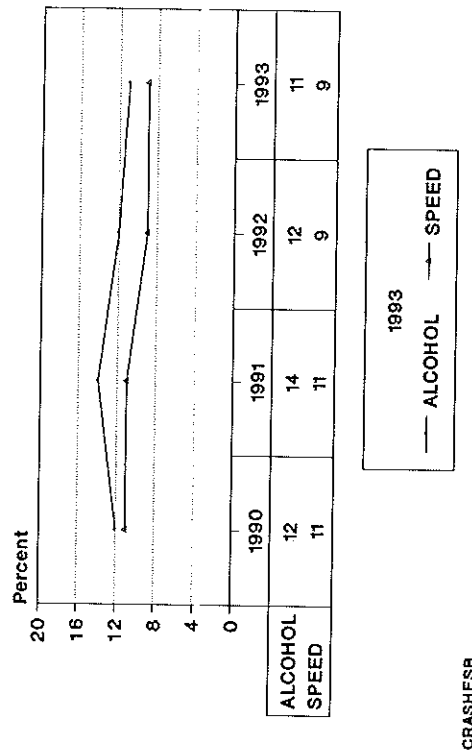
1993
ALCOHOL SPEED

CRASHESR

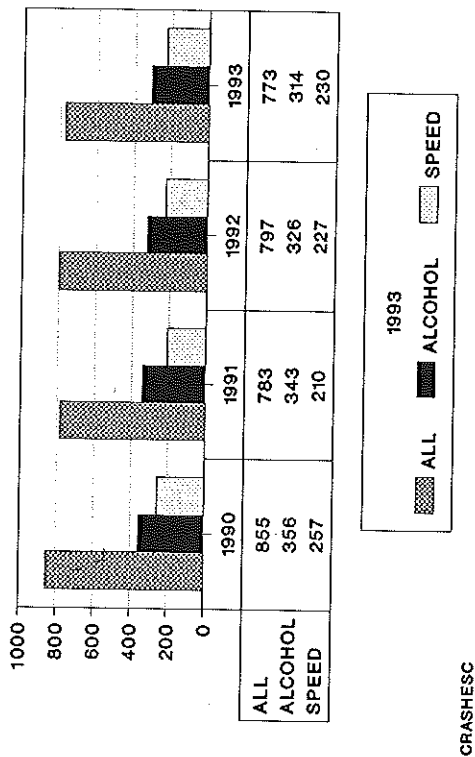
FATAL AND INJURY ALCOHOL AND SPEED



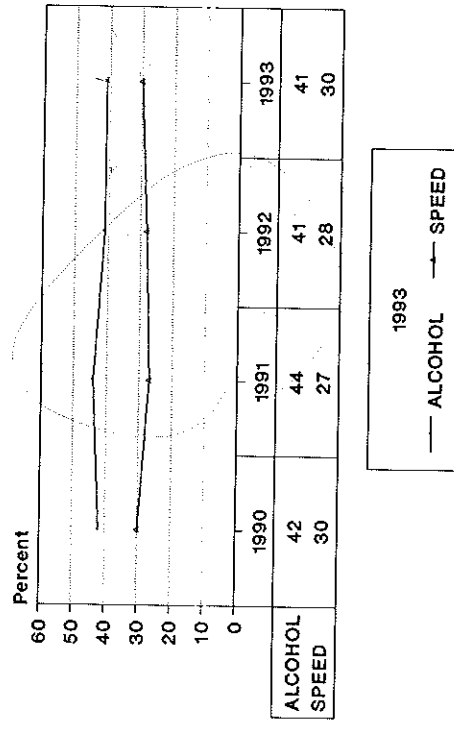
PERCENT OF F&I CRASHES ALCOHOL/SPEED



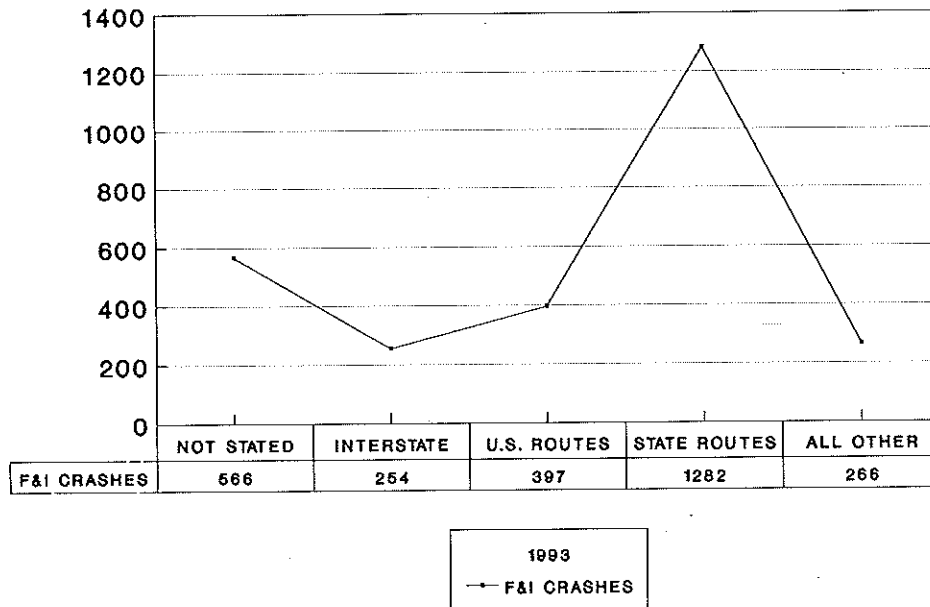
FATAL CRASHES ALCOHOL AND SPEED



PERCENT OF FATAL CRASHES ALCOHOL/SPEED

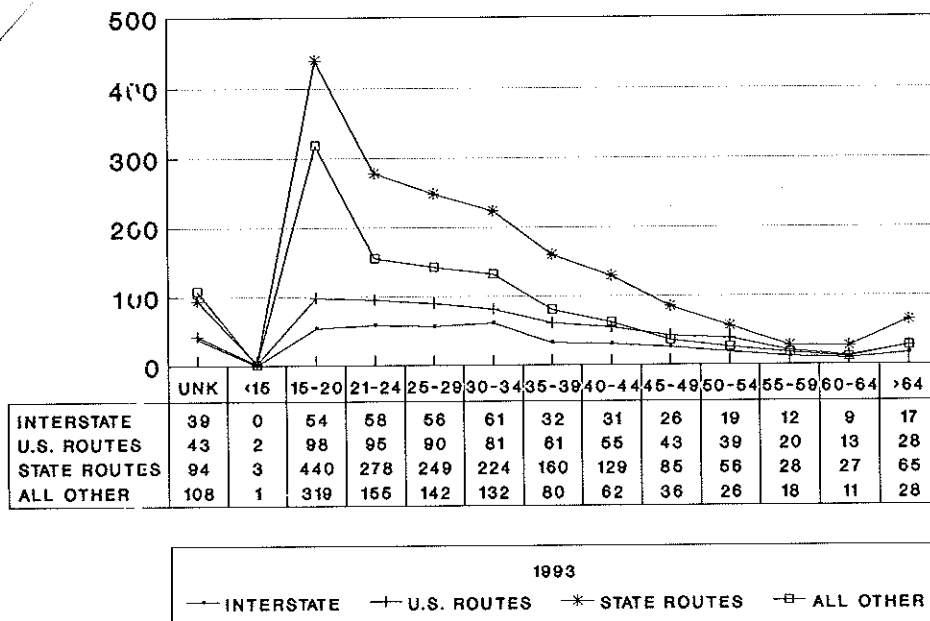


F&I SPEED INVOLVED CRASHES RURAL AREAS ONLY



Crashes 2,765
SPEED88

F&I RURAL SPEED INVOLVED CRASHES DRIVERS BY AGE

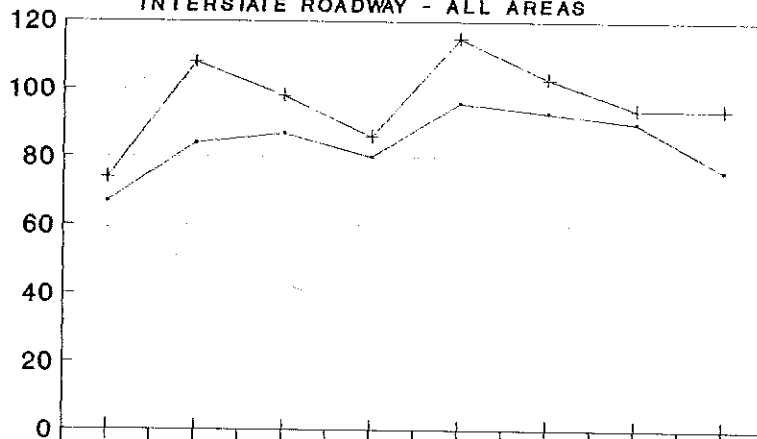


Crashes 2,765/drivers 4,038
SPEED8

✓

INTERSTATE ROADWAYS

INTERSTATE ROADWAY - ALL AREAS



	1986	1987	1988	1989	1990	1991	1992	1993
FATAL CRASHES	67	84	87	80	96	93	90	76
DEATHS	74	108	98	86	115	103	94	94

— FATAL CRASHES —+ DEATHS

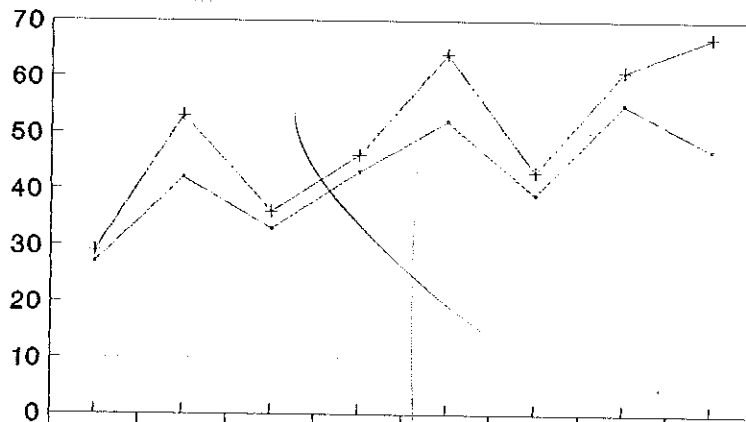
16 Ad

Intersta

2

get info

INTERSTATE ROADWAY - ONLY AREAS CHANGED TO 65



	1986	1987	1988	1989	1990	1991	1992	1993
FATAL CRASHES	27	42	33	43	52	39	55	47
DEATHS	29	53	36	46	64	43	61	67

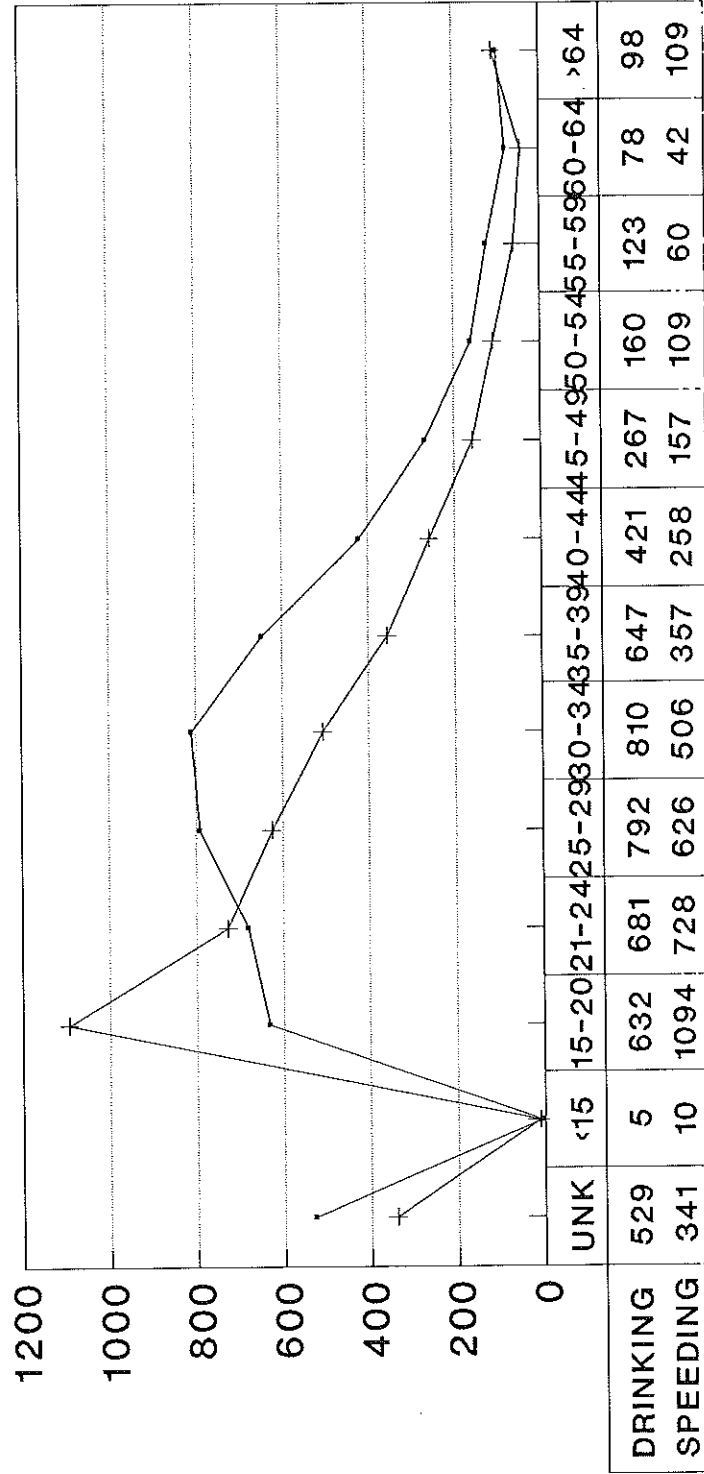
— FATAL CRASHES —+ DEATHS

56 / 61 / 10 per d

Interstb

FATAL & INJURY CRASHES

DRIVERS HAD BEEN DRINKING/SPEEDING

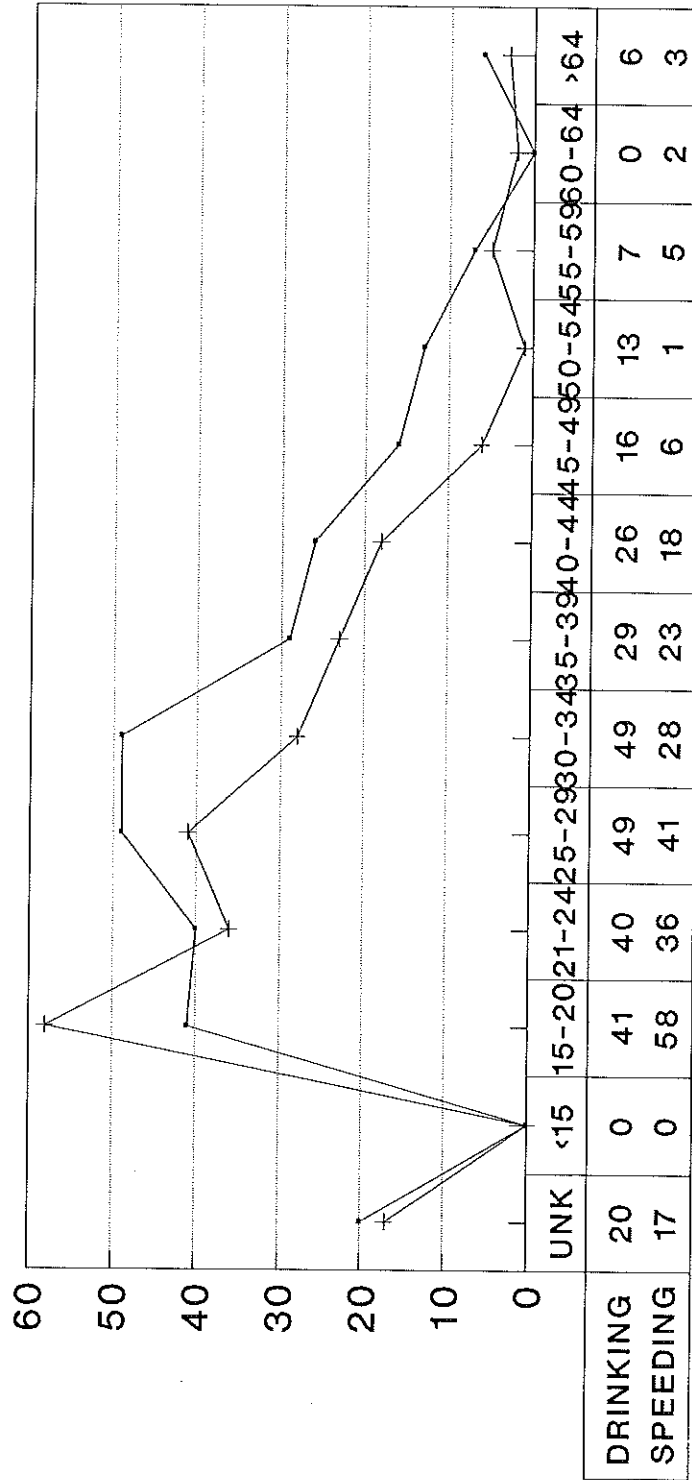


1993

—●— DRINKING —+— SPEEDING

DRIVER12

FATAL CRASHES DRIVERS HAD BEEN DRINKING/SPEEDING

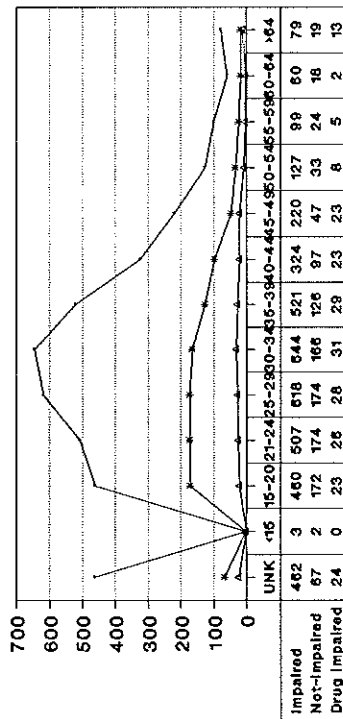


1993

—•— DRINKING —+— SPEEDING

There were no 15, 16 HBD
DRIVER13

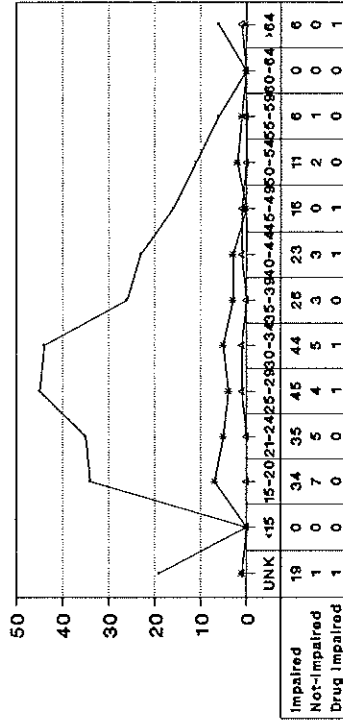
FATAL & INJURY CRASHES ALL DRIVERS BY AGE



1993
 — Impaired - - - Not-Impaired . . . Drug Impaired

Impaired 4124; Not Imp 1119; Drugged 236
 DRIVER1

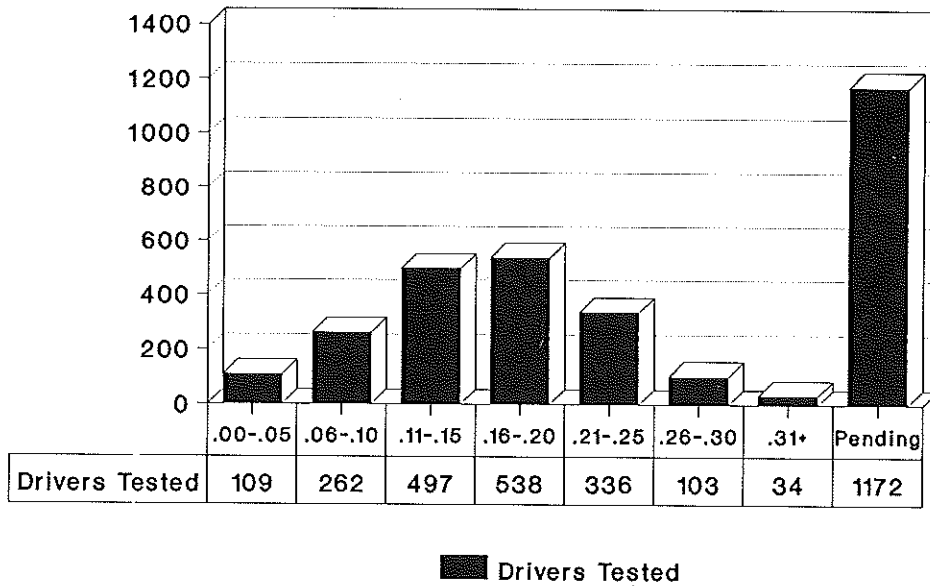
FATAL CRASHES ALL DRIVERS BY AGE



1993
 — Impaired - - - Not-Impaired . . . Drug Impaired

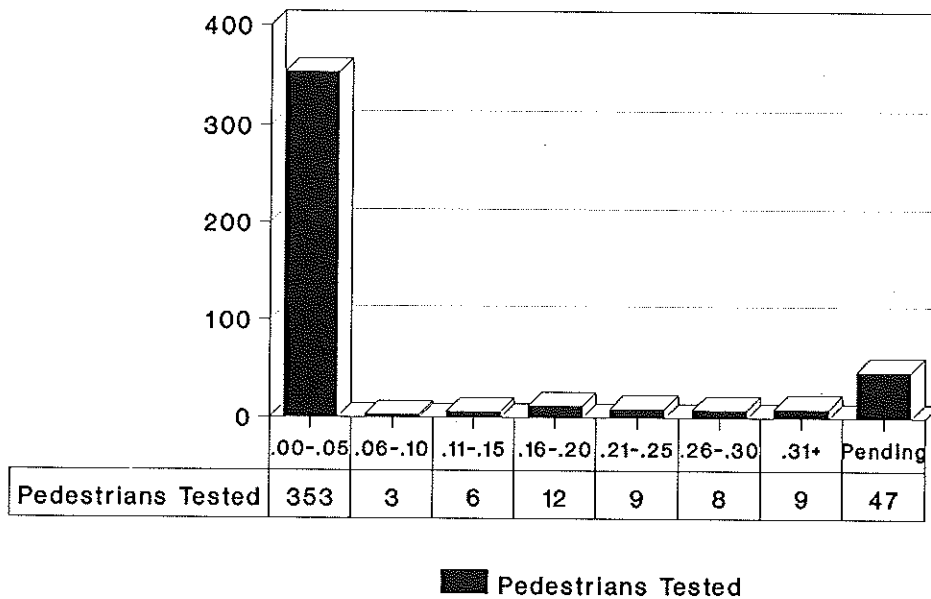
Impaired 266; Not Imp 31; Drugged 6
 DRIVER1A

Blood Alcohol Concentrations (BACs) for DRIVERS TESTED in F & I Crashes



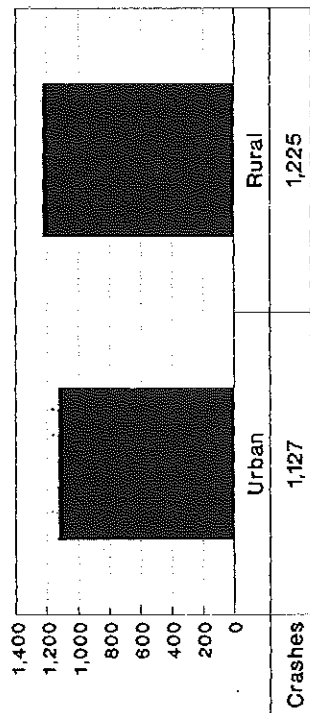
Source: HSI380

Blood Alcohol Concentrations (BACs) for PEDESTRIANS Tested in F & I Crashes



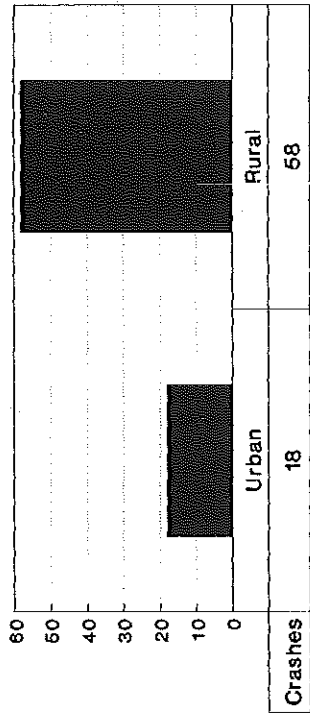
Source: LHSC HSI380 03/12/94

FATAL & INJURY CRASHES Involving Commercial Vehicles



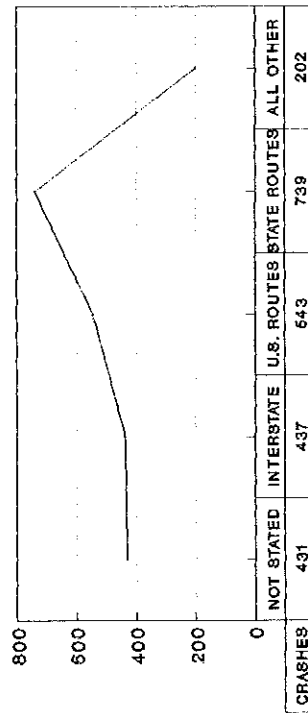
COMVEHA

FATAL CRASHES Involving Commercial Vehicles



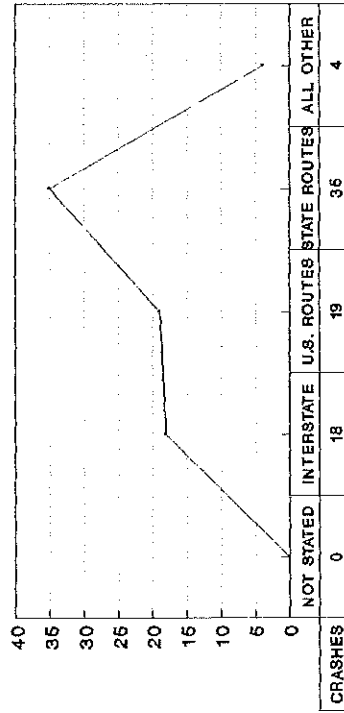
COMVEHB

FATAL & INJURY CRASHES Involving Commercial Vehicles



Commercial Vehicles-Single Unit Trucks,
Truck Tractor, Truck Combination, & Bus
COMVEHC

FATAL CRASHES Involving Commercial Vehicles



comvehd

Monday Holiday
6pm Fri - Midnight Monday

HOLIDAY PERIODS

	BEGAN 6PM	ENDED MIDNIGHT	TOTAL HOURS	CRASHES* F&I	AIC	DEATHS ALL	AIC	INJURIES* ALL	AIC
MARDI GRAS									
1993	2/19-2/23		102	635	104	13	8	1,077	158
1992	2/28-3/03		102	690	119	9	5	1,210	225
1991	2/08-2/12		102	507	103	7	5	889	197
<i>11-15</i> MEMORIAL DAY									
1993	5/28-5/31		78	347	54	13	3	586	106
1992	5/22-5/25		78	447	70	9	4	771	126
1991	5/24-5/27		78	406	75	11	7	750	158
<i>27-30</i> 4TH OF JULY									
1993	7/02-7/05		78	378	73	13	8	706	147
1992	7/02-7/05		78	364	60	7	1	692	102
1991	7/03-7/07		102	598	125	15	6	1,092	222
<i>1-4</i> LABOR DAY									
1993	9/03-9/06		78	444	74	15	7	754	129
1992	9/04-9/07		78	349	77	8	2	623	153
1991	8/30-9/02		78	443	97	6	4	817	158
<i>2-5</i> THANKSGIVING									
1993	11/24-11/28		102	473	78	6	2	889	142
1992	11/25-11/29		102	352	68	7	4	632	112
1991	11/27-12/01		102	483	106	12	6	855	187
<i>23-27</i> CHRISTMAS									
1993	12/24-12/26		54	228	48	13	6	401	94
1992	12/23-12/27		102	461	87	11	3	831	164
1991	12/23-12/25		54	34	58	8	3	398	96
<i>23-26</i> NEW YEARS									
1993	12/31-1/02		54	41	13	3	2	58	23
1992	12/30-1/03		102	304	63	8	2	482	103
1991	12/29-1/01		78	312	73	13	7	517	118



SAFETY BELT/CHILD RESTRAINT USAGE

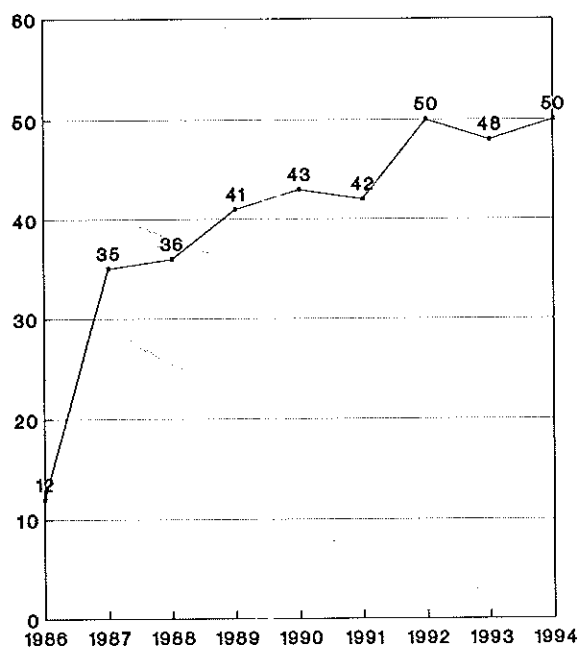
AGES 5 AND OLDER

	'86	'87	'88	'89	'90	'91	'92	'93	'94
1	12%	31%	33%	27%	41%	32%	55%	41%	41%
2	12%	26%	28%	43%	42%	42%	50%	51%	59%
3	11%	38%	46%	43%	37%	44%	46%	55%	52%
4	16%	38%	48%	54%	55%	61%	52%	64%	54%
5	19%	47%	36%	40%	61%	50%	62%	52%	61%
6	17%	39%	32%	40%	42%	46%	40%	52%	52%
7	15%	47%	39%	48%	30%	47%	51%	45%	52%
8	5%	27%	29%	33%	28%	34%	54%	55%	52%
LA	12%	35%	36%	41%	43%	42%	50%	48%	50%

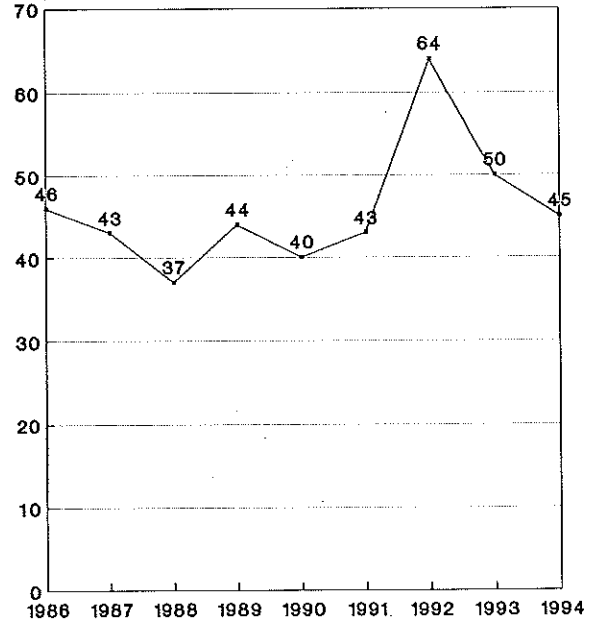
AGES UNDER 5 YEARS

	'86	'87	'88	'89	'90	'91	'92	'93	'94
1	32%	61%	35%	51%	30%	35%	85%	48%	25%
2	43%	57%	38%	44%	42%	56%	70%	61%	61%
3	51%	34%	49%	39%	23%	34%	50%	95%	39%
4	48%	44%	46%	57%	75%	73%	64%	41%	52%
5	53%	53%	46%	68%	61%	64%	54%	60%	51%
6	31%	35%	26%	17%	25%	34%	44%	47%	58%
7	64%	47%	30%	32%	60%	52%	85%	54%	78%
8	63%	27%	21%	41%	36%	25%	34%	36%	46%
LA	46%	43%	37%	44%	40%	43%	64%	50%	45%

PERCENT



Percent



1993 FATAL DRIVERS BY AGE

AGE	DRIVERS	AGE	DRIVERS
NOT STATED	42	32	12
<15	4	33	12
15	4	34	12
16	7	35	11
17	14	36	15
18	18	37	5
19	14	38	2
20	11	39	10
21	16	40-44	34
22	17	45-49	34
23	9	50-54	19
24	12	55-59	14
25	17	60-64	15
26	16	65-69	12
27	9	70-74	10
28	14	75-79	11
29	9	80-84	10
30	7	>84	10
31	16	TOTAL	504

Driver "Had Been Drinking" - 181 or 36%
 Driver "Exceeding Stated/Safe Speed" - 63 or 12%
 Driver males - 395 or 78%
 Driver females - 108 or 22%
 FATALD

1993 FATAL DRIVERS SAFETY BELT USE

	URBAN	RURA
1) NOT STATED OR NOT APPLICABLE	3	2
2) SEATBELT/HARNESS NOT INSTALLED	29	32
3) ONLY SEATBELT INSTALLED, NOT USED	3	15
4) BELT/HARNESS INSTALLED, NOT USED	53	206
*5) BELT USED/HARNESS NOT INSTALLED	3	2
*6) SEATBELT USED, HARNESS NOT USED	1	1
*7) SEATBELT AND HARNESS USED	19	63
8) BELT USE UNKNOWN/HARNESS NOT INST	2	2
9) SEATBELT AND HARNESS USE UNKNOWN	13	56
TOTAL	126	378
*Restraints used -	23	66

FATALDB

1993 FATAL OCCUPANTS BY AGE

<u>AGE</u>	<u>OCCUPANT</u>	<u>AGE</u>	<u>OCCUPANT</u>
NOT STATED	6	31	2
0-4	12	32	4
5-14	23	33	4
15	7	34	5
16	18	35	4
17	15	36	2
18	8	37	4
29	8	38	2
20	11	39	3
21	9	40-44	11
22	7	45-49	7
23	6	50-54	3
24	4	55-59	4
25	3	60-64	2
26	2	65-69	9
27	3	70-74	5
28	6	75-79	4
29	6	80-84	3
30	3	>84	7
		TOTAL	242

Occupant males = 139 or 57%
 Occupant females = 103 or 43%
 FATALO

1993 FATAL OCCUPANTS SAFETY BELT USE

	<u>URBAN</u>	<u>RURAL</u>
1) NOT STATED OR NOT APPLICABLE	1	0
2) SEATBELT/HARNESS NOT INSTALLED	4	17
3) ONLY SEATBELT INSTALLED, NOT USED	2	22
4) BELT/HARNESS INSTALLED, NOT USED	27	87
5) BELT USED/HARNESS NOT INSTALLED	1	5
6) SEATBELT USED, HARNESS NOT USED	1	0
7) SEATBELT AND HARNESS USED	13	17
8) BELT USE UNKNOWN/HARNESS NOT INST	0	1
9) SEATBELT AND HARNESS USE UNKNOWN	13	31
TOTAL	62	180
•Restraints used •	15	22

FATALOB

1993 FATAL PEDESTRIANS BY AGE

AGE	PEDESTRIANS	AGE	PEDESTRIANS
NOT STATED	1	15-19	11
1	1	20-24	10
2	2	25-29	9
3	1	30-34	16
4	1	35-39	12
5	2	40-44	19
6	2	45-49	6
7	1	50-54	7
8	3	55-59	2
9	1	60-64	2
10	1	65 or older	20
11	4	TOTAL	138
12	2		
13	1		
14	1		

Pedestrian males = 98 or 71%
 Pedestrian females = 39 or 29%

FATALP

1993 FATAL PEDESTRIANS CONDITION OF PEDESTRIAN

	URBAN	RURAL
1) NOT STATED OR NOT APPLICABLE	12	9
2) APPARENTLY ASLEEP	0	0
3) INATTENTIVE OR DISTRACTED	7	9
4) ILLNESS	0	0
5) EYESIGHT DEFECT	0	0
6) FAINTING, BLACKOUT, ETC.	0	0
7) HEARING DEFECT	1	0
8) FATIGUED	0	0
9) OTHER BODY DEFECTS	0	1
10) DRINKING - NOT IMPAIRED	0	2
11) DRINKING - IMPAIRED	16	30
12) DRUGGED	0	0
13) CONDITION UNKNOWN	18	25
14) NORMAL	4	4
TOTAL	58	80
PEDESTRAIN CRASHES	56	79

Pedestrians drinking = 46 or 33%
 Rural fatalities = 58%, Urban = 42%
 Nationally, Rural fatalities = 31%, Urban = 69%
 Nationally, Louisiana Pedestrian Fatalities Rank
 8th In The Nation Per 1,000 Population

FATALPB

FACTS ABOUT 1993 DRIVERS 55 AND ABOVE

THE CRASHES THESE DRIVERS WERE INVOLVED IN

- 1) 10,173 crashes, or 21% of all crashes
- 2) 6,686, or 66%, occurred in urban areas
- 3) 6,094, or 60%, were between 10am and 6pm
- 4) 553, or 5%, involved alcohol
- 5) 555, or 5%, were single vehicle crashes
- 6) 9,695, or 95%, were moderate or minor crashes
- 7) 135, or 1%, were fatal crashes
- 8) 9,044, or 89%, type of accident "collision with other vehicle)
- 9) 4,113, or 40%, type of collision "right angle"/3,694, or 36%, type of collision "rear end"

THE DRIVERS

- 1) 11,085 drivers, or 12% of total drivers involved in Fatal and Injury Crashes
- 2) 6,817, or 61%, were male
- 3) 8,054, or 73%, were belted
- 4) 82, or .7%, were fatal drivers
- 5) 5,675, or 51%, sustained no injury

OTHER FACTS

- 1) 26% of the occupants involved were 14 or under
- 3) 33% of the pedestraains involved were 14 or under

DRIVERS 55 AND ABOVE

- 1) Crashes occur in urban areas
- 2) Buckle up
- 3) Don't drink and drive
- 5) Are not usually involved in severe crashes

BICYCLE CRASHES BY AGE

<u>AGE</u>	<u>DRIVERS</u>	<u>AGE</u>	<u>DRIVERS</u>
NOT STATED	435	15	25
<1	1	16	34
1	0	17	24
2	0	18	16
3	2	19	16
4	4	20-24	75
5	9	25-29	68
6	13	30-34	68
7	22	35-39	64
8	30	40-44	42
9	34	45-49	27
10	29	50-54	8
11	35	55-59	9
12	43	60-64	4
13	43	65>	17
14	48	TOTAL	1,245

Fatalities = 25

Males = 986 or 79%; Females 219 or 18%

Total Fatal & Injury Crashes = 1,231

81% of F&I Crashes occurred at Intersections

61% of F&I Crashes occurred between April/Sept.

17% of F&I Crashes occurred on Friday night

MOTORCYCLE CRASHES

RIDERS

<u>RIDER INJURY</u>	<u>1990</u>	<u>1991</u>	<u>1992</u>	<u>1993</u>
FATAL	45	34	39	32
CRITICAL	21	13	22	18
SERIOUS	42	37	46	35
SEVERE	70	71	72	65
MODERATE	353	270	344	281
MINOR	573	396	484	442
NO INJURY	60	52	59	80
TOTAL	1,164	873	1,066	953

HELMET USE

USED	686	532	649	545
NOT USED	478	341	417	408
TOTAL	1,164	873	1,066	953

% HELMET USE

USED	58.19	60.9%	60.9%	57.2%
NOT USED	41.1%	39.1%	39.1%	42.8%

OBSERVATIONAL SURVEY - HELMET USE

	<u>1991</u>	<u>1992</u>	<u>1993</u>
STATEWIDE	N/A	98%	98%

TRAIN CRASHES

	<u>1990</u>	<u>1991</u>	<u>1992</u>	<u>1993</u>
F&I CRASHES				
URBAN	55	40	45	33
RURAL	<u>51</u>	<u>49</u>	<u>46</u>	<u>30</u>
TOTAL	106	79	91	63
INJURY CRASHES	85	73	75	50
FATAL CRASHES	<u>21</u>	<u>06</u>	<u>16</u>	<u>13</u>
TOTAL	106	79	91	63
ALCOHOL CRASHES				
INJURY	16	05	05	04
FATAL	<u>3</u>	<u>00</u>	<u>00</u>	<u>03</u>
TOTAL	19	05	09	07
INJURIES	141	107	104	62
DEATHS	26	06	19	18

LOUISIANA OPERATION LIFESAVER PROGRAM

NATIONAL RANKING OF GRADE CROSSING INCIDENTS	1	5	5	5
---	---	---	---	---

EMERGENCY MEDICAL SERVICES

AVERAGE RESPONSE TIMES

NHTSA REGION VI STATES

	1992		1993	
	<u>URBAN</u>	<u>RURAL</u>	<u>URBAN</u>	<u>RURAL</u>
ARKANSAS	25.00	U/K	15.00	24.00
LOUISIANA	19.02	30.44	22.43	27.40
NEW MEXICO	19.81	40.90	22.73	38.90
OKLAHOMA	25.70	34.66	24.23	35.93
TEXAS	38.00	38.11	28.01	38.53
NATIONAL AVERAGE	24.69	34.89	24.94	35.12

Average Response Times = EMS arrival at crash scene to
hospital arrival

"The time required by EMS units to transport persons to
a medical facility is perhaps the most critical measure
for EMS performance."

Source: 1991, 1992, 1993 FARS Fact Books

POPULATION, LICENSED DRIVERS AND REGISTERED VEHICLES

PARISH	POPULATION	1993 LICENSED DRIVERS	1993 REGISTERED VEHICLES
1-Acadia	55,882	34,021	59,275
2-Allen	21,226	13,777	22,511
3-Ascension	58,214	39,151	75,164
4-Assumption	22,753	12,813	24,629
5-Avoyelles	39,159	24,485	41,478
6-Beauregard	30,083	20,865	35,533
7-Bienvenue	15,979	9,760	19,936
8-Bossier	86,088	54,307	110,096
9-Caddo	248,253	153,233	254,784
10-Calcasieu	168,134	117,056	184,208
11-Caldwell	9,810	6,951	17,801
12-Cameron	9,260	5,865	11,133
13-Catahoula	11,065	7,060	11,795
14-Claiborne	17,405	9,265	19,814
15-Concordia	20,828	12,982	23,100
16-DeSoto	25,346	14,668	26,277
17-E. Baton Rouge	380,105	249,924	421,115
18-E. Carroll	9,709	4,949	8,263
19-E. Feliciana	19,211	11,076	18,414
20-Evangeline	33,274	18,985	29,509
21-Franklin	22,387	13,329	22,393
22-Grant	17,526	10,754	23,057
23-Iberia	68,297	43,103	66,995
24-Iberville	31,049	18,125	28,469
25-Jackson	15,705	9,287	14,441
26-Jefferson	448,306	306,972	513,862
27-Jeff Davis	30,722	20,259	26,991
28-Lafayette	164,762	111,868	177,546
29-Lafourche	85,860	53,136	79,310
30-LaSalle	13,662	9,943	16,447
31-Lincoln	41,745	23,528	39,794
32-Livingston	70,526	46,577	84,638
33-Madison	12,463	6,198	10,813
34-Morehouse	31,938	18,985	36,577
35-Natchitoches	36,689	20,831	35,773
36-Orleans	496,938	237,628	325,983
37-Quachita	142,191	88,938	138,630
38-Plaquemines	25,575	16,056	26,894
39-Pointe Coupee	22,540	14,117	21,209
40-Rapides	131,556	79,424	119,971
41-Red River	9,387	5,598	8,745
42-Richland	20,629	12,491	18,087
43-Sabine	22,646	14,642	26,270
44-St. Bernard	66,631	45,361	65,937
45-St. Charles	42,437	28,724	48,795
46-St. Helena	9,874	5,091	11,032
47-St. James	20,879	12,872	18,414
48-St. John	39,996	24,502	33,158
49-St. Landry	80,331	53,228	71,825
50-St. Martin	43,978	25,229	34,462
51-St. Mary	58,086	36,681	48,799
52-St. Tammany	144,508	108,723	184,063
53-Tangipahoa	85,709	55,514	83,075
54-Tensas	7,103	3,992	6,491
55-Terrebonne	96,982	65,387	87,470
56-Union	20,690	14,033	22,580
57-Vermilion	50,055	33,296	44,991
58-Vernon	61,961	30,274	58,780
59-Washington	43,185	28,138	39,263
60-Webster	41,989	28,052	44,243
61-W. Baton Rouge	19,419	12,899	24,379
62-W. Carroll	12,093	8,357	12,192
63-W. Feliciana	12,915	5,235	9,954
64-Winn	16,269	9,662	15,754
Not Stated		5	
TOTAL	4,219,973	2,638,237	4,243,387

Sources: 1990 Census; LA Office of Motor Vehicles, 1993

PRINTED
06 02 95

PARISH NAME

LOUISIANA HIGHWAY SAFETY COMMISSION
FATAL AND INJURY ACCIDENT DATA
=====

PAGE
1

AREA	--ACCIDENTS--			--FATALITIES--			--INJURIES--		
	ALL	ALC	SPD	ALL	ALC	SPD	ALL	ALC	SPD
ACADIA									
RURAL	306	66	24	9	0	1	493	88	37
CHURCH POINT	14	1	1	0	0	0	21	1	4
CROWLEY	84	6	0	2	1	0	121	6	0
IOTA	2	0	0	0	0	0	2	0	0
RAYNE	40	4	1	0	0	0	68	5	1
EUNICE	2	0	0	0	0	0	3	0	0
O164	1	0	0	0	0	0	1	0	0
PARISH TOTALS	449	77	26	11	1	1	709	100	42
ALLEN									
RURAL	101	20	27	6	2	4	172	40	55
KINDER	15	0	1	0	0	0	21	0	2
OAKDALE	36	0	0	0	0	0	65	0	0
PARISH TOTALS	152	20	28	6	2	4	258	40	57
ASCENSION									
RURAL	651	88	57	21	12	2	1,121	149	109
OGNALDSONVILLE	39	1	3	1	0	1	48	1	2
GONZALES	137	5	15	2	1	0	225	12	29
SORRENTO	9	2	3	0	0	0	14	3	4
PARISH TOTALS	836	96	78	24	13	3	1,408	165	144
ASSUMPTION									
RURAL	194	28	15	2	0	0	382	47	25
NAPOLEONVILLE	6	0	2	0	0	0	12	0	2
PARISH TOTALS	200	28	17	2	0	0	394	47	27
AVOUELLES									
RURAL	232	44	31	13	6	9	371	62	39
BUNKIE	26	0	1	0	0	0	44	0	1
COTTONPORT	4	1	2	0	0	0	9	1	2
HESSMER	1	0	1	0	0	0	1	0	1
MARKSVILLE	52	4	2	1	0	0	91	11	2
MOREAUVILLE	6	1	2	0	0	0	8	2	3
SIMMESPORT	5	2	1	0	0	0	12	3	3
PARISH TOTALS	326	52	40	14	6	9	536	79	51
BEAUREGARD									
RURAL	181	17	42	4	1	3	274	26	61
MERRYVILLE	1	0	1	0	0	0	2	0	2
DERIDDER	71	3	3	0	0	0	94	5	5
PARISH TOTALS	253	20	46	4	1	3	370	31	68
BIENVILLE									
RURAL	109	24	31	3	2	0	167	38	42
ARCADIA	1	0	0	1	0	0	0	0	0
BIENVILLE	3	2	2	0	0	0	9	8	8
GIBSLAND	2	0	0	1	0	0	1	0	0
SALINE	1	1	0	1	1	0	0	0	0
PARISH TOTALS	116	27	33	6	3	0	177	46	50

DATA AVAILABLE AS OF 03/09/95

PCT-ALC-SPD

PRINTED
06 02 95

PARISH NAME

AREA

LOUISIANA HIGHWAY SAFETY COMMISSION
FATAL AND INJURY ACCIDENT DATA
=====

PAGE
2

-----> 1993 <-----

		--ACCIDENTS--		--FATALITIES--		--INJURIES--	
		ALL	ALC	SPD	ALL	ALC	SPD
BOSSIER	RURAL	398	48	93	7	0	4
	BENTON	1	0	0	0	0	0
	BOSSIER CITY	442	40	41	3	1	1
	HAUGHTON	7	1	1	0	0	0
	PLAIN DEALING	4	0	1	0	0	0
CADDO	PARISH TOTALS	852	89	136	10	1	5
	RURAL	277	28	55	19	3	9
	BELCHER	2	1	1	0	0	0
	GILLIAM	3	0	1	1	0	0
	GREENWOOD	8	1	2	0	0	0
CALCASIEU	HOSSTON	1	0	0	0	0	0
	IDA	2	0	0	0	0	0
	OIL CITY	1	0	0	0	0	0
	VIVIAN	11	1	1	0	0	0
	SHREVEPORT	2,400	184	144	26	6	7
CALDWELL	PARISH TOTALS	2,705	215	204	46	9	16
	RURAL	661	123	146	27	7	12
	DE QUINCY	3	0	0	1	0	0
	IOWA	11	0	0	0	0	0
	LAKE CHARLES	1,249	107	13	9	0	1
CAMERON	SULPHUR	138	12	3	0	0	0
	VINTON	13	1	1	1	0	1
	WESTLAKE	52	5	3	0	0	0
	PARISH TOTALS	2,127	248	166	38	7	14
CATAHOULA	RURAL	65	17	21	3	0	2
	COLUMBIA	9	1	2	0	0	0
	PARISH TOTALS	74	18	23	3	0	2
CATAHOULA	RURAL	73	15	5	5	5	1
	1260	1	0	0	0	0	0
	PARISH TOTALS	74	15	5	5	5	1
CATAHOULA	RURAL	57	15	17	7	5	3
	JONESVILLE	11	0	0	1	0	0
	SICILY ISLAND	1	1	0	0	0	0
	PARISH TOTALS	69	16	17	8	5	3

DATA AVAILABLE AS OF 03/09/95

PCT-ALC-SPD

PRINTED
06 02 95

LOUISIANA HIGHWAY SAFETY COMMISSION
FATAL AND INJURY ACCIDENT DATA
=====

PAGE
3

PARISH NAME	AREA	--ACCIDENTS--			--FATALITIES--			--INJURIES--		
		ALL	ALC	SPD	ALL	ALC	SPD	ALL	ALC	SPD
CLATBORNE	RURAL	63	12	15	4	4	2	88	23	21
	ATHENS	1	0	1	0	0	0	1	0	1
	HAYNESVILLE	8	0	0	0	0	0	10	0	0
	PARISH TOTALS	72	12	16	4	4	2	99	23	22
CONCORDIA	RURAL	84	22	25	8	3	6	142	42	37
	FERRIDAY	8	1	0	1	0	0	8	1	0
	VIDALIA	13	1	5	0	0	0	16	1	8
	PARISH TOTALS	105	24	30	9	3	6	166	44	45
DE SOTO	RURAL	167	36	56	8	1	4	245	48	84
	GRAND CANE	2	0	0	0	0	0	3	0	0
	KEATCHIE	1	0	0	0	0	0	1	0	0
	LONGSTREET	1	0	0	0	0	0	1	0	0
	MANSFIELD	33	4	5	1	0	0	46	9	9
	STONEWALL	1	1	0	0	0	0	1	1	0
	PARISH TOTALS	205	41	61	9	1	4	297	58	93
EAST BATON ROUGE	RURAL	1,783	154	146	19	10	5	2,857	263	246
	BAKER	103	5	8	1	0	0	172	8	13
	BATON ROUGE	3,581	159	96	28	11	3	5,579	248	148
	ZACHARY	52	5	10	1	1	0	74	4	14
	PARISH TOTALS	5,519	323	260	49	22	8	8,682	523	421
EAST CARROLL	RURAL	42	8	5	2	2	0	78	16	11
	LAKE PROVIDENCE	17	0	0	0	0	0	46	0	0
	PARISH TOTALS	59	8	5	2	2	0	124	16	11
EAST FELICIANA	RURAL	88	13	10	12	4	4	171	24	25
	CLINTON	2	1	0	0	0	0	2	1	0
	JACKSON	1	0	1	0	0	0	1	0	1
	NORWOOD	1	1	1	1	1	1	1	1	1
	SLAUGHTER	1	0	0	0	0	0	2	0	0
	PARISH TOTALS	93	15	12	13	5	5	177	26	27
EVANGELINE	RURAL	193	24	13	9	1	1	339	43	23
	BASILE	3	0	0	0	0	0	4	0	0
	CHATAIGNIER	2	0	0	0	0	0	2	0	0
	MAMOU	25	1	1	0	0	0	33	1	1
	PINE PRAIRIE	1	1	1	0	0	0	1	1	1
	TURKEY CREEK	1	0	1	0	0	0	1	0	1
	VILLE PLATTE	147	10	4	0	0	0	230	27	7
	PARISH TOTALS	372	36	20	9	1	1	610	72	33

DATA AVAILABLE AS OF 03/09/95

PCT-ALC-SPD

PRINTED
06 02 95

PARISH NAME

AREA

LOUISIANA HIGHWAY SAFETY COMMISSION
FATAL AND INJURY ACCIDENT DATA

===== 1993 <=====

PAGE
4

		--ACCIDENTS--		--FATALITIES--		--INJURIES--	
		ALL	ALC	SPD	ALL	ALC	SPD
FRANKLIN	RURAL	37	11	9	7	0	4
	PARISH TOTALS	37	11	9	7	0	4
GRANT	RURAL	98	22	21	3	2	2
	COLFAX	6	0	0	0	0	0
IBERIA	MONTGOMERY	1	0	0	0	0	0
	PARISH TOTALS	105	22	21	3	2	2
IBERVILLE	RURAL	401	71	57	6	2	2
	JEANERETTE	29	3	2	1	1	0
JACKSON	NEW IBERIA	277	24	3	5	3	0
	PARISH TOTALS	707	98	62	12	6	2
JEFFERSON	RURAL	219	45	31	14	7	8
	GROSSE TETE	4	1	2	0	0	0
JACKSON	MARINGOUIN	3	0	2	0	0	0
	PLAQUEMINE	75	8	6	0	0	0
JEFFERSON	WHITE CASTLE	5	1	2	0	0	0
	PARISH TOTALS	306	55	43	14	7	8
JEFFERSON	RURAL	72	12	21	4	0	4
	HODGE	1	0	0	0	0	0
JEFFERSON	JONESBORO	2	0	1	1	0	0
	PARISH TOTALS	75	12	22	5	0	4
JEFFERSON	URBAN	4,647	638	275	28	15	9
	GRAND ISLE	6	2	2	0	0	0
JEFFERSON	GREYNA	206	30	16	2	0	0
	HARAHAN	51	10	8	0	0	0
JEFFERSON	KENNER	649	114	58	3	1	1
	WESTWEGO	137	29	11	2	1	1
JEFFERSON	PARISH TOTALS	5,696	823	370	35	17	11
	RURAL	176	25	38	8	3	5
JEFFERSON	ELTON	7	0	1	2	0	0
	JENNINGS	52	5	4	1	0	1
JEFFERSON	LAKE ARTHUR	4	0	1	0	0	0
	WELSH	8	1	1	0	0	0
JEFFERSON	PARISH TOTALS	247	31	45	11	3	6

DATA AVAILABLE AS OF 03/09/95

PCT-ALC-SPD

PRINTED
06 02 95

LOUISIANA HIGHWAY SAFETY COMMISSION
FATAL AND INJURY ACCIDENT DATA
=====

PAGE
5

PARISH NAME	AREA	--ACCIDENTS--			--FATALITIES--			--INJURIES--		
		ALL	ALC	SPD	ALL	ALC	SPD	ALL	ALC	SPD
LAFAYETTE	RURAL	709	113	54	16	10	6	1,130	163	91
	DUNSON	5	2	2	0	0	0	6	2	3
	LAFAYETTE	1,171	94	21	15	9	1	1,698	138	27
	SCOTT	42	8	6	0	0	0	55	14	10
	YOUNGVILLE	5	0	1	0	0	0	5	0	1
	PARISH TOTALS	1,932	217	84	31	19	7	2,894	317	132
LAFOURCHE	RURAL	793	149	79	26	6	7	1,366	243	125
	LOCKPORT	9	1	1	0	0	0	13	3	1
	THIBODAUX	129	10	16	0	0	0	222	19	46
	PARISH TOTALS	931	160	96	26	6	7	1,601	265	172
LA SALLE	RURAL	67	15	21	9	4	3	96	20	35
	JENA	20	0	2	0	0	0	41	0	6
	OLLA	2	1	0	1	0	0	2	1	0
	PARISH TOTALS	89	16	23	10	4	3	139	21	41
LINCOLN	RURAL	136	14	24	7	3	1	228	26	39
	GRAMBLING	4	1	0	1	1	0	6	0	0
	RUSTON	213	10	18	0	0	0	327	15	37
	PARISH TOTALS	353	25	42	8	4	1	561	41	76
LIVINGSTON	RURAL	506	98	45	10	7	1	861	161	75
	ALBANY	7	1	0	0	0	0	15	1	0
	DENHAM SPRINGS	106	7	5	3	0	0	163	13	11
	LIVINGSTON	5	1	1	0	0	0	7	1	1
	WALKER	44	1	5	1	1	0	71	0	6
	PARISH TOTALS	668	108	56	14	8	1	1,117	176	93
MADISON	RURAL	65	13	8	3	1	2	104	17	16
	TALLULAH	14	2	3	1	0	0	21	4	4
	PARISH TOTALS	79	15	11	4	1	2	125	21	20
MOREHOUSE	RURAL	194	23	32	3	0	1	353	34	58
	BASTROP	172	15	38	1	0	1	282	32	80
	PARISH TOTALS	366	38	70	4	0	2	635	66	138
NATCHITOCHES	RURAL	228	48	51	14	9	8	374	75	77
	CAMPTI	5	0	1	0	0	0	11	0	2
	NATCHEZ	1	1	0	0	0	0	1	1	0
	NATCHITOCHES	91	8	21	0	0	1	165	19	45
	RORELIN	1	0	0	0	0	0	2	0	0
	PARISH TOTALS	326	57	73	15	9	9	553	95	124

DATA AVAILABLE AS OF 03/09/95

PCT-ALC-SPD

LOUISIANA HIGHWAY SAFETY COMMISSION
FATAL AND INJURY ACCIDENT DATA
***** 1993 *****

PARISH NAME	AREA	--ACCIDENTS--			--FATALITIES--			--INJURIES--		
		ALL	ALC	SPD	ALL	ALC	SPD	ALL	ALC	SPD
ORLEANS	RURAL	6	1	1	0	0	0	13	1	2
	NEW ORLEANS	8,690	353	358	61	24	11	15,047	613	640
	PARISH TOTALS	8,696	354	359	61	24	11	15,060	614	642
OUACHITA	RURAL	692	90	108	20	5	2	1,161	134	184
	MONROE	734	59	87	14	2	4	1,127	80	136
	STERLINGTON	1	0	0	0	0	0	1	0	0
	WEST MONROE	185	15	23	2	0	1	280	20	33
	3710	1	1	1	0	0	0	1	1	1
	PARISH TOTALS	1,613	155	219	36	7	7	2,570	235	354
PLAQUEMINES	RURAL	188	26	34	8	6	3	298	38	55
	PARISH TOTALS	188	26	34	8	6	3	298	38	55
POINTE COUPEE	RURAL	171	30	16	4	1	0	313	56	24
	LIVONIA	13	1	1	2	2	2	18	0	0
	MORGANZA	2	0	0	0	0	0	5	0	0
	NEW ROADS	30	5	0	0	0	0	51	8	0
	PARISH TOTALS	216	36	17	6	3	2	387	64	24
RAPIDES	RURAL	537	70	101	17	7	7	837	107	160
	ALEXANDRIA	832	72	25	0	0	0	1,341	135	42
	BALL	9	1	3	0	0	0	17	1	3
	CHENEYVILLE	6	1	2	0	0	0	9	1	3
	FOREST HILL	1	0	1	0	0	0	1	0	1
	GLENMORA	1	0	0	0	0	0	3	0	0
	LECOMPT	5	0	1	0	0	0	8	0	2
	PINEVILLE	134	14	17	0	0	0	213	18	30
	WOODWORTH	1	0	1	0	0	0	1	0	1
	PARISH TOTALS	1,526	158	151	17	7	7	2,430	262	242
RED RIVER	RURAL	65	12	14	3	2	0	84	12	16
	COUSHATTA	1	0	1	2	0	2	3	0	3
	EDGEFIELD	1	0	1	0	0	0	3	0	3
	PARISH TOTALS	67	12	16	5	2	2	90	12	22
RICHLAND	RURAL	117	21	15	6	1	2	210	38	28
	DELHI	2	0	0	1	0	0	2	0	0
	RAYVILLE	1	0	0	0	0	0	1	0	0
	PARISH TOTALS	120	21	15	7	1	2	213	38	28

PRINTED
06 02 95

LOUISIANA HIGHWAY SAFETY COMMISSION
FATAL AND INJURY ACCIDENT DATA
=====

PAGE
7

PARISH NAME	AREA	--ACCIDENTS--			--FATALITIES--			--INJURIES--		
		ALL	ALC	SPD	ALL	ALC	SPD	ALL	ALC	SPD
SABINE	RURAL	118	27	34	4	3	0	176	38	54
	CONVERSE	1	0	0	0	0	0	1	0	0
	FLORIEN	2	0	1	0	0	0	2	0	1
	MANY	1	0	0	0	0	0	2	0	0
	PLEASANT HILL	1	0	0	0	0	0	1	0	0
ST BERNARD	ZWOLLE	8	3	3	0	0	0	11	5	5
	PARISH TOTALS	131	30	38	4	3	0	193	43	60
ST CHARLES	RURAL	502	48	42	14	3	2	803	83	60
	PARISH TOTALS	502	48	42	14	3	2	803	83	60
ST HELENA	RURAL	352	69	75	11	4	4	554	111	118
	PARISH TOTALS	352	69	75	11	4	4	554	111	118
ST JAMES	RURAL	45	8	8	4	2	1	66	9	13
	PARISH TOTALS	45	8	8	4	2	1	66	9	13
ST JOHN	RURAL	141	25	16	4	1	1	282	41	25
	GRAMERCY	2	0	0	0	0	0	2	0	0
	LUTCHER	8	0	2	0	0	0	11	0	3
	4720	1	0	0	0	0	0	2	0	0
	PARISH TOTALS	152	25	18	4	1	1	297	41	28
ST LANDRY	RURAL	349	63	61	5	1	3	587	103	94
	PARISH TOTALS	349	63	61	5	1	3	587	103	94
ST MARTIN	RURAL	429	70	19	15	5	3	727	122	29
	GRAND COTEAU	5	0	0	2	0	0	5	0	0
	LEONVILLE	8	0	0	0	0	0	10	0	0
	OPELOUSAS	148	21	5	0	0	0	228	36	6
	PORT BARRE	7	1	0	2	2	0	12	2	0
	SUNSET	11	0	1	1	0	0	20	0	1
	WASHINGTON	1	0	0	0	0	0	2	0	0
	ARNAUDVILLE	1	0	0	0	0	0	2	0	0
	EUNICE	114	6	3	1	1	0	183	6	5
	PARISH TOTALS	724	98	28	21	8	3	1,189	166	41
ST MARTIN	RURAL	351	72	40	11	8	3	550	110	59
	BREAUX BRIDGE	60	12	3	1	0	0	91	15	5
	ST MARTINVILLE	41	4	4	0	0	0	61	11	5
	PARISH TOTALS	452	88	47	12	8	3	702	136	69

DATA AVAILABLE AS OF 03/09/95

PCT-ALC-SPD

PARISH NAME

AREA

ST MARY

RURAL
BERWICK
FRANKLIN
MORGAN CITY
PATTERSON
PARISH TOTALS

ST TAMMANY

RURAL
ABITA SPRINGS
COVINGTON
FOLSOM
MADISONVILLE
MANDEVILLE
PEARL RIVER
SLIDELL
SUN
PARISH TOTALS

TANGIPAHOA

RURAL
AMITE
HAMMOND
INDEPENDENCE
KENTWOOD
PONCHATOULA
ROSELAND
TANGIPAHOA
TICKFAW
PARISH TOTALS

TENSAS

RURAL
ST JOSEPH
PARISH TOTALS

TERREBONNE

RURAL
HOUMA
PARISH TOTALS

UNION

RURAL
BERNICE
FARMERVILLE
PARISH TOTALS

LOUISIANA HIGHWAY SAFETY COMMISSION
FATAL AND INJURY ACCIDENT DATA
*****> 1993 <*****

		--ACCIDENTS--			--FATALITIES--			--INJURIES--		
PARISH NAME	AREA	ALL	ALC	SPD	ALL	ALC	SPD	ALL	ALC	SPD
ST MARY	RURAL	256	72	52	15	13	4	550	130	115
	BERWICK	24	5	2	2	2	1	35	7	2
	FRANKLIN	47	4	7	1	1	1	67	7	12
	MORGAN CITY	69	4	7	0	0	0	115	13	11
	PATTERSON	15	2	2	2	1	0	35	5	5
	PARISH TOTALS	411	87	70	20	17	6	802	162	145
ST TAMMANY	RURAL	841	158	180	27	19	12	1,291	227	263
	ABITA SPRINGS	6	1	0	0	0	0	7	1	0
	COVINGTON	76	4	6	1	0	0	109	4	9
	FOLSOM	3	1	2	0	0	0	5	1	3
	MADISONVILLE	9	2	2	0	0	0	11	2	2
	MANDEVILLE	92	5	11	3	1	1	131	8	23
	PEARL RIVER	16	5	10	0	0	0	22	7	14
	SLIDELL	318	32	16	1	0	0	473	42	21
	SUN	3	0	0	0	0	0	4	0	0
	PARISH TOTALS	1,364	208	227	32	20	13	2,053	292	335
TANGIPAHOA	RURAL	645	79	102	21	11	7	1,111	134	169
	AMITE	25	0	5	1	0	0	43	0	7
	HAMMOND	337	32	27	4	2	3	576	63	52
	INDEPENDENCE	1	0	0	0	0	0	1	0	0
	KENTWOOD	13	0	1	0	0	0	22	0	1
	PONCHATOULA	5	0	1	0	0	0	6	0	2
	ROSELAND	2	0	1	2	0	2	1	0	0
	TANGIPAHOA	1	1	0	1	1	0	0	0	0
	TICKFAW	1	0	0	0	0	0	1	0	0
	PARISH TOTALS	1,030	112	137	29	14	12	1,761	197	231
TENSAS	RURAL	10	2	1	3	1	0	10	1	1
	ST JOSEPH	2	0	0	0	0	0	3	0	0
	PARISH TOTALS	12	2	1	3	1	0	13	1	1
TERREBONNE	RURAL	1,067	168	110	24	14	7	1,885	314	201
	HOUMA	313	44	24	8	5	4	496	72	40
	PARISH TOTALS	1,380	212	134	32	19	11	2,381	386	241
UNION	RURAL	125	25	33	7	3	1	210	38	49
	BERNICE	1	0	0	0	0	0	5	0	0
	FARMERVILLE	25	5	6	2	1	1	40	14	10
	PARISH TOTALS	151	30	39	9	4	2	255	52	59

PRINTED
06 02 95

LOUISIANA HIGHWAY SAFETY COMMISSION
FATAL AND INJURY ACCIDENT DATA
=====

PAGE
9

PARISH NAME	AREA	--ACCIDENTS--		--FATALITIES--		--INJURIES--	
		ALL	ALC	ALL	ALC	ALL	ALC
VERMILION	RURAL	252	53	11	8	383	73
	ABBEVILLE	117	4	2	1	173	6
	ERATH	13	0	0	0	17	0
	GUEYDAN	7	1	0	0	12	4
	KAPLAN	22	3	0	0	30	3
	MAURICE	8	1	0	0	14	4
	DELCAMBRE	2	0	0	0	2	0
	PARISH TOTALS	421	62	13	9	631	90
VERNON	RURAL	261	49	13	4	404	78
	ANACOCO	1	1	0	0	2	2
	LEESVILLE	104	13	1	1	133	14
	ROSEPINE	7	1	0	0	9	1
	SIMPSON	4	0	0	0	6	0
	PARISH TOTALS	377	64	14	5	554	95
WASHINGTON	RURAL	142	20	7	3	223	39
	ANGIE	3	0	0	0	4	0
	BOGALUSA	100	13	1	0	184	29
	FRANKLINTON	50	4	0	0	75	7
	VARNADO	3	1	0	0	3	1
	PARISH TOTALS	298	38	8	3	489	76
WEBSTER	RURAL	186	42	10	5	275	60
	CULLEN	1	0	0	0	1	0
	DOYLINE	1	0	0	0	2	0
	MINDEN	98	8	3	1	138	9
	SARPEYA	3	1	0	0	4	2
	SHONGALOO	2	2	0	0	3	3
	SPRINGHILL	24	2	3	0	33	3
	PARISH TOTALS	315	55	16	6	456	77
WEST BATON ROUGE	RURAL	240	45	11	5	411	81
	ADDIS	2	0	2	0	2	0
	BRUSLY	4	0	0	0	9	0
	PORT ALLEN	30	1	0	0	46	2
	6106	1	0	0	0	1	0
	PARISH TOTALS	277	46	13	5	469	83

DATA AVAILABLE AS OF 03/09/95

PCT-ALC-SPD

LOUISIANA HIGHWAY SAFETY COMMISSION FATAL AND INJURY ACCIDENT DATA ===== > 1993 <=====												PAGE 10
PRINTED 06 02 95	PARISH NAME	AREA	--ACCIDENTS--			--FATALITIES--			--INJURIES--			
			ALL	ALC	SPD	ALL	ALC	SPD	ALL	ALC	SPD	
WEST CARROLL		RURAL	41	5	7	0	0	0	73	13	14	
		EPPS	1	0	0	0	0	0	3	0	0	
		FOREST	2	0	1	0	0	0	3	0	2	
		OAK GROVE	15	0	1	0	0	0	21	0	1	
		PARISH TOTALS	59	5	9	0	0	0	100	13	17	
WEST FELICIANA		RURAL	62	12	12	5	2	2	149	21	54	
		ST FRANCISVILLE	10	0	0	0	0	0	22	0	0	
		PARISH TOTALS	72	12	12	5	2	2	171	21	54	
WINN		RURAL	85	16	22	4	1	0	132	19	32	
		WINNFIELD	29	3	2	0	0	0	45	3	6	
		PARISH TOTALS	114	19	24	4	1	0	177	22	38	
* ALL PARISHES *			47,989	5,211	4,287	884	363	273	77,896	8,373	7,022	

** FATAL & INJURY ACCIDENTS - 1993 **
 HSI380
 PARISH: STATE TOTALS
 CITY :

**** LOUISIANA HIGHWAY SAFETY COMMISSION ****
 ** FATAL & INJURY ACCIDENT FILE **
 DATA AVAILABLE AS OF: 03/09/95

PAGE 13
 DATE 05/31/95
 CALENDAR YEAR 1993

NOT STATED LESS THAN 1 YEAR	URBAN 5979	RURAL 1994	TOTAL 7973	**** DRIVER AGE NOT STATED LESS THAN 1 YEAR	URBAN 1025	RURAL 506	TOTAL 1531	**** PEDESTRIAN AGE NOT STATED LESS THAN 1 YEAR	URBAN 125	RURAL 39	TOTAL 164
01	2	3	5	01	498	307	805	01	16	2	18
02	0	0	0	02	898	459	1357	02	9	4	13
03	0	0	0	03	892	480	1372	03	28	10	38
04	3	0	3	04	867	477	1344	04	43	10	53
05	4	0	4	05	791	406	1197	05	43	4	47
06	8	2	10	06	776	399	1175	06	63	13	76
07	13	2	15	07	713	393	1106	07	65	12	77
08	20	3	23	08	710	362	1072	08	55	14	69
09	27	3	30	09	690	415	1105	09	47	12	59
10	32	2	34	10	686	379	1065	10	47	15	62
11	26	7	33	11	726	401	1127	11	38	10	48
12	31	9	40	12	741	402	1143	12	33	19	52
13	43	6	49	13	760	424	1184	13	49	8	57
14	50	11	61	14	750	497	1247	14	43	11	54
15	68	24	92	15	936	644	1580	15	35	11	46
16	464	412	876	16	1091	769	1860	16	29	14	43
17	849	779	1628	17	1188	851	2039	17	25	5	30
18	1255	999	2254	18	1294	890	2174	18	35	11	46
19	1653	1132	2785	19	1293	852	2145	19	24	6	30
20	1663	1041	2704	20	1177	636	1813	20	39	12	51
21	1681	1046	2727	21	1054	572	1626	21	21	8	29
22	1702	1055	2757	22	947	505	1452	22	18	5	23
23	1778	991	2769	23	865	474	1339	23	18	5	23
24	1592	937	2529	24	819	455	1274	24	26	11	37
25	1562	865	2427	25	652	366	1018	25	15	14	29
26	1510	839	2349	26	641	365	1006	26	24	8	32
27	1472	737	2209	27	576	352	928	27	25	4	29
28	1432	778	2210	28	562	293	855	28	28	12	40
29	1506	804	2310	29	541	300	841	29	15	9	24
30	1446	838	2284	30	572	282	854	30	24	12	36
31	1410	814	2224	31	426	238	664	31	30	15	45
32	1396	746	2143	32	394	241	635	32	27	9	36
33	1344	796	2140	33	396	240	636	33	23	9	32
34	1308	706	2014	34	361	206	567	34	18	5	23
35	1252	687	1939	35	361	192	526	35	27	11	38
36	1227	604	1831	36	334	188	526	36	24	8	32
37	1214	645	1859	37	287	155	442	37	22	13	35
38	1205	617	1822	38	305	159	464	38	23	6	29
39	1100	590	1690	39	279	131	410	39	18	10	24
40	1083	526	1609	40	303	154	457	40	14	4	18
41	997	470	1467	41	262	130	392	41	17	9	26
42	938	463	1401	42	240	118	358	42	13	4	17
43	881	436	1317	43	261	123	384	43	15	2	17
44	870	434	1304	44	239	117	356	44	18	6	24
45	910	462	1372	45	177	101	278	45	5	6	11
46	643	346	989	46	182	71	253	46	12	3	15
47	626	323	949	47	152	95	247	47	7	4	11
48	647	302	949	48				48			
49				49				49			

HS1380
PARISH: STATE TOTALS
CITY :

***** LOUISIANA HIGHWAY SAFETY COMMISSION *****
** FATAL & INJURY ACCIDENT FILE **
DATA AVAILABLE AS OF: 03/09/95

PAGE 14
DATE 05/31/95
CALENDAR YEAR 1993

***** DRIVER AGE	URBAN	RURAL	TOTAL	***** OCCUPANT AGE	URBAN	RURAL	TOTAL	***** PEDESTRIAN AGE	URBAN	RURAL	TOTAL
50	624	329	953	50	189	101	290	50	10	6	16
51	572	276	848	51	154	78	232	51	8	4	12
52	544	254	798	52	149	87	236	52	8	4	12
53	472	280	752	53	127	81	208	53	12	0	12
54	459	223	682	54	124	65	189	54	12	0	12
55	424	206	630	55	119	62	181	55	12	0	12
56	396	222	618	56	116	58	174	56	5	2	7
57	379	181	560	57	122	57	187	57	5	2	7
58	383	188	571	58	116	53	169	58	7	2	9
59	342	193	535	59	108	52	160	59	7	0	7
60	388	176	564	60	138	52	190	60	8	0	8
61	330	195	525	61	101	53	154	61	8	0	8
62	306	181	487	62	103	69	172	62	7	2	9
63	311	178	489	63	122	58	180	63	7	2	9
64	270	146	416	64	76	38	114	64	8	3	11
65	319	149	468	65	127	63	190	65	6	1	7
66	325	162	487	66	98	39	137	66	3	0	3
67	278	130	408	67	115	53	168	67	3	0	3
68	246	133	379	68	99	51	150	68	3	0	3
69	234	131	365	69	82	52	134	69	7	1	8
70	241	107	348	70	116	57	173	70	6	2	8
71	218	130	348	71	72	49	121	71	7	3	10
72	210	84	294	72	92	64	156	72	8	1	9
73	196	122	318	73	79	38	117	73	5	2	7
74	185	102	287	74	55	36	91	74	7	2	9
75	168	90	258	75	63	47	110	75	1	1	2
76	133	77	210	76	59	32	91	76	1	0	1
77	123	71	194	77	45	26	71	77	1	0	1
78	95	70	165	78	45	25	70	78	1	0	1
79	95	71	166	79	45	28	73	79	1	0	1
80	84	50	134	80	44	24	68	80	1	0	1
81	72	53	125	81	37	12	49	81	1	0	1
82	59	50	109	82	39	23	62	82	1	0	1
83	52	27	79	83	36	15	51	83	1	0	1
84	40	20	60	84	33	12	45	84	1	0	1
85	35	33	68	85	21	9	30	85	1	0	1
86	18	24	42	86	23	3	26	86	1	0	1
87	20	8	28	87	14	10	24	87	1	0	1
88	16	15	31	88	12	9	21	88	1	0	1
89	13	8	21	89	8	5	13	89	1	0	1
90	5	4	9	90	6	2	8	90	1	0	1
91	8	2	10	91	5	1	6	91	1	0	1
92	2	1	3	92	3	2	5	92	1	0	1
93	255	1	256	93	3	1	4	93	1	0	1
94	3	0	3	94	1	1	2	94	1	0	1
95	1	0	1	95	0	0	0	95	1	0	1
96	0	0	0	96	0	2	2	96	1	0	1
97	1	1	2	97	1	0	1	97	1	0	1
98	0	1	1	98	2	1	3	98	1	0	1
99	13	0	13	99	1	0	1	99	1	0	1
***** TOTAL	59625	31941	91566	***** TOTAL	35437	20067	55504	***** TOTAL	1679	533	2212

** F & I ACCIDENTS / ALC INVOLVED - 1993 **

HS1380
PARISH: STATE TOTALS
CITY :

**** LOUISIANA HIGHWAY SAFETY COMMISSION ****
** FATAL & INJURY ACCIDENT FILE **
DATA AVAILABLE AS OF: 03/09/95

PAGE 13
DATE 05/31/95
CALENDAR YEAR 1993

**** DRIVER AGE	URBAN	RURAL	TOTAL	**** OCCUPANT AGE	URBAN	RURAL	TOTAL	**** PEDESTRIAN AGE	URBAN	RURAL	TOTAL
NOT STATED	700	246	946	NOT STATED	89	42	131	NOT STATED	12	3	15
LESS THAN 1 YEAR	0	0	0	LESS THAN 1 YEAR	22	19	41	LESS THAN 1 YEAR	2	1	3
01	0	0	0	01	44	37	81	01	1	0	1
02	0	0	0	02	31	37	68	02	1	0	1
03	0	0	0	03	26	29	55	03	3	0	3
04	0	0	0	04	35	32	67	04	1	0	1
05	0	0	0	05	36	23	59	05	4	0	4
06	0	0	0	06	29	26	55	06	2	0	2
07	1	0	1	07	27	20	47	07	3	0	3
08	6	0	6	08	29	28	57	08	3	0	3
09	2	0	2	09	24	21	45	09	0	0	0
10	0	0	0	10	29	27	56	10	3	0	3
11	0	0	0	11	33	25	58	11	2	1	3
12	0	0	0	12	40	21	61	12	2	0	2
13	2	0	2	13	32	46	78	13	3	0	3
14	3	1	4	14	41	53	94	14	3	2	5
15	16	0	16	15	55	74	129	15	1	2	3
16	39	21	60	16	67	94	161	16	4	0	4
17	71	48	119	17	99	124	223	17	2	2	4
18	124	141	265	18	121	159	280	18	2	0	2
19	122	154	276	19	135	133	268	19	2	2	4
20	126	158	284	20	117	119	236	20	6	2	8
21	124	141	265	21	111	92	203	21	7	1	8
22	137	142	279	22	96	103	199	22	1	2	3
23	120	138	258	23	69	101	170	23	4	2	6
24	130	143	273	24	65	67	132	24	6	2	8
25	116	126	242	25	68	74	142	25	7	1	8
26	123	111	234	26	54	70	124	26	1	1	2
27	119	118	237	27	44	55	99	27	1	5	6
28	101	135	236	28	47	58	105	28	1	5	6
29	123	136	259	29	51	53	104	29	4	0	4
30	117	143	260	30	65	63	128	30	5	9	14
31	97	137	234	31	34	40	74	31	8	3	11
32	97	122	219	32	40	40	80	32	5	4	9
33	110	139	249	33	31	39	70	33	5	5	10
34	103	127	230	34	42	38	80	34	5	3	8
35	112	101	213	35	30	30	60	35	2	0	2
36	93	137	230	36	23	46	69	36	3	3	6
37	83	94	177	37	30	31	61	37	5	2	7
38	95	84	179	38	24	35	59	38	7	1	8
39	81	107	188	39	27	24	51	39	3	3	6
40	74	82	156	40	21	31	52	40	4	1	5
41	70	70	140	41	24	19	43	41	4	1	5
42	75	77	152	42	16	26	42	42	4	3	7
43	62	68	130	43	23	11	34	43	1	1	2
44	57	58	115	44	13	17	30	44	1	1	2
45	65	56	121	45	18	22	40	45	5	3	8
46	58	62	120	46	13	22	35	46	3	1	4
47	36	51	87	47	10	11	21	47	1	4	5
48	40	41	81	48	10	5	15	48	2	3	5
49	29	42	71	49	9	16	25	49	0	2	2

** F & I ACCIDENTS / ALC INVOLVED - 1993 **

HS1380
PARISH: STATE TOTALS
CITY :

**** LOUISIANA HIGHWAY SAFETY COMMISSION ****
** FATAL & INJURY ACCIDENT FILE **
DATA AVAILABLE AS OF: 03/09/95

PAGE 14
DATE 05/31/95
CALENDAR YEAR 1993

***** DRIVER AGE	URBAN	RURAL	TOTAL	***** OCCUPANT AGE	URBAN	RURAL	TOTAL	***** PEDESTRIAN AGE	URBAN	RURAL	TOTAL
50	42	35	77	50	5	19	24	50	3	1	4
51	35	40	75	51	4	8	12	51	3	4	7
52	30	33	63	52	5	12	17	52	3	1	4
53	29	28	57	53	7	6	13	53	3	0	3
54	19	18	37	54	9	6	15	54	0	0	0
55	26	21	47	55	4	5	9	55	0	0	0
56	20	31	51	56	6	7	13	56	0	0	0
57	23	23	46	57	5	8	13	57	1	0	1
58	19	18	37	58	6	7	13	58	0	0	0
59	14	14	28	59	4	5	9	59	1	0	1
60	12	20	32	60	7	7	14	60	2	0	2
61	17	18	35	61	5	6	11	61	0	0	0
62	12	14	26	62	4	5	9	62	1	0	1
63	12	15	27	63	5	4	9	63	1	0	1
64	10	13	23	64	2	4	6	64	0	0	0
65	16	11	27	65	5	4	9	65	0	0	0
66	15	8	23	66	4	1	5	66	0	0	0
67	10	10	20	67	6	2	8	67	0	0	0
68	11	7	18	68	5	4	9	68	0	0	0
69	5	6	11	69	1	5	6	69	0	0	0
70	8	5	13	70	2	2	4	70	0	0	0
71	7	5	14	71	4	2	6	71	0	0	0
72	9	4	13	72	1	4	5	72	0	0	0
73	5	4	9	73	1	3	4	73	0	0	0
74	1	6	7	74	2	1	3	74	0	0	0
75	3	1	4	75	3	1	4	75	0	0	0
76	9	1	10	76	1	0	1	76	0	0	0
77	6	3	9	77	2	0	2	77	0	0	0
78	2	3	5	78	3	2	5	78	0	0	0
79	2	2	4	79	0	3	3	79	0	0	0
80	2	0	2	80	2	0	2	80	0	0	0
81	2	3	5	81	1	0	1	81	0	0	0
82	1	0	1	82	1	0	1	82	0	0	0
83	1	0	1	83	0	0	0	83	0	0	0
84	0	0	0	84	1	0	1	84	0	0	0
85	0	0	0	85	0	0	0	85	0	0	0
86	0	0	0	86	1	0	1	86	0	0	0
87	0	0	0	87	0	0	0	87	0	0	0
88	0	0	0	88	0	0	0	88	0	0	0
89	0	0	0	89	1	1	2	89	0	0	0
90	0	0	0	90	0	0	0	90	0	0	0
91	0	0	0	91	0	0	0	91	0	0	0
92	0	0	0	92	0	0	0	92	0	0	0
93	37	0	37	93	1	0	1	93	0	0	0
94	0	0	0	94	0	0	0	94	0	0	0
95	0	0	0	95	0	0	0	95	0	0	0
96	0	0	0	96	0	0	0	96	0	0	0
97	0	0	0	97	0	0	0	97	0	0	0
98	0	0	0	98	0	0	0	98	0	0	0
99	1	0	1	99	0	0	0	99	0	0	0
***** TOTAL	4333	4255	8588	***** TOTAL	2397	2562	4959	***** TOTAL	212	118	330

** FATAL ACCIDENTS - 1993 **
 HSI380
 PARISH: STATE TOTALS
 CITY :

**** DRIVER AGE		**** OCCUPANT AGE		**** PEDESTRIAN AGE		**** FATAL & INJURY ACCIDENT FILE **		**** LOUISIANA HIGHWAY SAFETY COMMISSION ****		DATE 05/31/95		CALENDAR YEAR 1993		PAGE 13	
NOT STATED	LESS THAN 1 YEAR	NOT STATED	LESS THAN 1 YEAR	NOT STATED	LESS THAN 1 YEAR	** FATAL	** INJURY	** FATAL	** INJURY	URBAN	RURAL	URBAN	RURAL	URBAN	RURAL
01	0	0	0	0	0	0	0	0	0	0	0	0	0	0	0
02	0	0	0	0	0	0	0	0	0	0	0	0	0	0	0
03	0	0	0	0	0	0	0	0	0	0	0	0	0	0	0
04	0	0	0	0	0	0	0	0	0	0	0	0	0	0	0
05	0	0	0	0	0	0	0	0	0	0	0	0	0	0	0
06	0	0	0	0	0	0	0	0	0	0	0	0	0	0	0
07	0	0	0	0	0	0	0	0	0	0	0	0	0	0	0
08	0	0	0	0	0	0	0	0	0	0	0	0	0	0	0
09	0	0	0	0	0	0	0	0	0	0	0	0	0	0	0
10	0	0	0	0	0	0	0	0	0	0	0	0	0	0	0
11	0	0	0	0	0	0	0	0	0	0	0	0	0	0	0
12	0	0	0	0	0	0	0	0	0	0	0	0	0	0	0
13	0	0	0	0	0	0	0	0	0	0	0	0	0	0	0
14	0	0	0	0	0	0	0	0	0	0	0	0	0	0	0
15	0	0	0	0	0	0	0	0	0	0	0	0	0	0	0
16	0	0	0	0	0	0	0	0	0	0	0	0	0	0	0
17	0	0	0	0	0	0	0	0	0	0	0	0	0	0	0
18	0	0	0	0	0	0	0	0	0	0	0	0	0	0	0
19	0	0	0	0	0	0	0	0	0	0	0	0	0	0	0
20	0	0	0	0	0	0	0	0	0	0	0	0	0	0	0
21	0	0	0	0	0	0	0	0	0	0	0	0	0	0	0
22	0	0	0	0	0	0	0	0	0	0	0	0	0	0	0
23	0	0	0	0	0	0	0	0	0	0	0	0	0	0	0
24	0	0	0	0	0	0	0	0	0	0	0	0	0	0	0
25	0	0	0	0	0	0	0	0	0	0	0	0	0	0	0
26	0	0	0	0	0	0	0	0	0	0	0	0	0	0	0
27	0	0	0	0	0	0	0	0	0	0	0	0	0	0	0
28	0	0	0	0	0	0	0	0	0	0	0	0	0	0	0
29	0	0	0	0	0	0	0	0	0	0	0	0	0	0	0
30	0	0	0	0	0	0	0	0	0	0	0	0	0	0	0
31	0	0	0	0	0	0	0	0	0	0	0	0	0	0	0
32	0	0	0	0	0	0	0	0	0	0	0	0	0	0	0
33	0	0	0	0	0	0	0	0	0	0	0	0	0	0	0
34	0	0	0	0	0	0	0	0	0	0	0	0	0	0	0
35	0	0	0	0	0	0	0	0	0	0	0	0	0	0	0
36	0	0	0	0	0	0	0	0	0	0	0	0	0	0	0
37	0	0	0	0	0	0	0	0	0	0	0	0	0	0	0
38	0	0	0	0	0	0	0	0	0	0	0	0	0	0	0
39	0	0	0	0	0	0	0	0	0	0	0	0	0	0	0
40	0	0	0	0	0	0	0	0	0	0	0	0	0	0	0
41	0	0	0	0	0	0	0	0	0	0	0	0	0	0	0
42	0	0	0	0	0	0	0	0	0	0	0	0	0	0	0
43	0	0	0	0	0	0	0	0	0	0	0	0	0	0	0
44	0	0	0	0	0	0	0	0	0	0	0	0	0	0	0
45	0	0	0	0	0	0	0	0	0	0	0	0	0	0	0
46	0	0	0	0	0	0	0	0	0	0	0	0	0	0	0
47	0	0	0	0	0	0	0	0	0	0	0	0	0	0	0
48	0	0	0	0	0	0	0	0	0	0	0	0	0	0	0
49	0	0	0	0	0	0	0	0	0	0	0	0	0	0	0

** FATAL ACCIDENTS - 1993 **

HS1380
PARISH: STATE TOTALS
CITY :

**** LOUISIANA HIGHWAY SAFETY COMMISSION ****

** FATAL & INJURY ACCIDENT FILE **

DATA AVAILABLE AS OF: 03/09/95

PAGE 14
DATE 05/31/95
CALENDAR YEAR 1993

***** DRIVER AGE	URBAN	RURAL	TOTAL	***** OCCUPANT AGE	URBAN	RURAL	TOTAL	***** PEDESTRIAN AGE	URBAN	RURAL	TOTAL
50	1	11	12	50	0	4	4	50	1	1	2
51	2	7	9	51	0	3	3	51	0	2	2
52	2	3	5	52	2	1	3	52	1	0	1
53	1	8	9	53	0	1	1	53	1	0	1
54	2	6	8	54	1	5	6	54	1	0	1
55	3	7	10	55	1	0	1	55	1	0	1
56	2	7	9	56	1	3	4	56	1	0	1
57	2	9	11	57	0	1	1	57	1	0	1
58	4	4	8	58	0	1	1	58	1	0	1
59	2	1	3	59	1	1	2	59	0	0	0
60	1	3	4	60	0	0	0	60	0	0	0
61	3	5	8	61	0	2	2	61	0	1	1
62	1	2	3	62	0	1	1	62	0	0	0
63	3	3	6	63	0	0	0	63	0	1	1
64	3	3	6	64	0	0	0	64	0	0	0
65	1	2	3	65	0	1	1	65	0	1	1
66	2	4	6	66	1	2	3	66	0	1	1
67	2	4	6	67	2	2	4	67	0	0	0
68	2	4	6	68	3	2	5	68	0	0	0
69	3	3	6	69	1	1	2	69	0	0	0
70	0	0	0	70	0	3	3	70	0	0	0
71	2	2	4	71	0	2	2	71	0	0	0
72	1	2	3	72	0	2	2	72	0	0	0
73	3	2	5	73	2	2	4	73	0	0	0
74	2	3	5	74	2	3	5	74	1	0	1
75	2	4	6	75	2	3	5	75	0	0	0
76	2	0	2	76	0	1	1	76	0	0	0
77	0	3	3	77	0	0	0	77	0	0	0
78	1	2	3	78	1	1	2	78	0	0	0
79	2	2	4	79	0	1	1	79	0	0	0
80	3	2	5	80	0	1	1	80	0	0	0
81	0	3	3	81	1	1	2	81	0	0	0
82	2	3	5	82	0	1	1	82	0	0	0
83	0	2	2	83	0	0	0	83	0	0	0
84	1	1	2	84	0	0	0	84	0	0	0
85	0	3	3	85	0	1	1	85	0	0	0
86	2	1	3	86	0	0	0	86	3	0	3
87	2	0	2	87	2	1	3	87	0	0	0
88	0	1	1	88	0	1	1	88	1	0	1
89	1	0	1	89	0	1	1	89	0	0	0
90	0	1	1	90	0	0	0	90	0	0	0
91	0	0	0	91	0	1	1	91	0	0	0
92	0	0	0	92	0	0	0	92	0	0	0
93	0	0	0	93	0	0	0	93	0	0	0
94	0	0	0	94	1	0	1	94	0	0	0
95	0	0	0	95	0	0	0	95	0	0	0
96	0	0	0	96	0	0	0	96	0	0	0
97	0	0	0	97	0	0	0	97	0	0	0
98	0	0	0	98	0	0	0	98	0	0	0
99	0	0	0	99	0	0	0	99	0	0	0
***** TOTAL	372	795	1167	***** TOTAL	225	568	793	***** TOTAL	60	84	144

** FATAL ACCIDENTS / ALC INVOLVED - 1993 **
 HSI380
 PARISH: STATE TOTALS
 CITY :

**** DRIVER AGE		URBAN		RURAL		TOTAL	**** OCCUPANT AGE		URBAN		RURAL		TOTAL	**** PEDESTRIAN AGE		URBAN		RURAL		TOTAL
NOT STATED	LESS THAN 1 YEAR						NOT STATED	LESS THAN 1 YEAR						NOT STATED	LESS THAN 1 YEAR					
01	0	0	0	0	0	0	01	0	0	0	0	0	0	01	0	0	0	0	0	0
02	0	0	0	0	0	0	02	0	0	0	0	0	0	02	0	0	0	0	0	0
03	0	0	0	0	0	0	03	0	0	0	0	0	0	03	0	0	0	0	0	0
04	0	0	0	0	0	0	04	0	0	0	0	0	0	04	0	0	0	0	0	0
05	0	0	0	0	0	0	05	0	0	0	0	0	0	05	0	0	0	0	0	0
06	0	0	0	0	0	0	06	0	0	0	0	0	0	06	0	0	0	0	0	0
07	0	0	0	0	0	0	07	0	0	0	0	0	0	07	0	0	0	0	0	0
08	0	0	0	0	0	0	08	0	0	0	0	0	0	08	0	0	0	0	0	0
09	0	0	0	0	0	0	09	0	0	0	0	0	0	09	0	0	0	0	0	0
10	0	0	0	0	0	0	10	0	0	0	0	0	0	10	0	0	0	0	0	0
11	0	0	0	0	0	0	11	0	0	0	0	0	0	11	0	0	0	0	0	0
12	0	0	0	0	0	0	12	0	0	0	0	0	0	12	0	0	0	0	0	0
13	0	0	0	0	0	0	13	0	0	0	0	0	0	13	0	0	0	0	0	0
14	0	0	0	0	0	0	14	0	0	0	0	0	0	14	0	0	0	0	0	0
15	0	0	0	0	0	0	15	0	0	0	0	0	0	15	0	0	0	0	0	0
16	0	0	0	0	0	0	16	0	0	0	0	0	0	16	0	0	0	0	0	0
17	0	0	0	0	0	0	17	0	0	0	0	0	0	17	0	0	0	0	0	0
18	0	0	0	0	0	0	18	0	0	0	0	0	0	18	0	0	0	0	0	0
19	0	0	0	0	0	0	19	0	0	0	0	0	0	19	0	0	0	0	0	0
20	0	0	0	0	0	0	20	0	0	0	0	0	0	20	0	0	0	0	0	0
21	0	0	0	0	0	0	21	0	0	0	0	0	0	21	0	0	0	0	0	0
22	0	0	0	0	0	0	22	0	0	0	0	0	0	22	0	0	0	0	0	0
23	0	0	0	0	0	0	23	0	0	0	0	0	0	23	0	0	0	0	0	0
24	0	0	0	0	0	0	24	0	0	0	0	0	0	24	0	0	0	0	0	0
25	0	0	0	0	0	0	25	0	0	0	0	0	0	25	0	0	0	0	0	0
26	0	0	0	0	0	0	26	0	0	0	0	0	0	26	0	0	0	0	0	0
27	0	0	0	0	0	0	27	0	0	0	0	0	0	27	0	0	0	0	0	0
28	0	0	0	0	0	0	28	0	0	0	0	0	0	28	0	0	0	0	0	0
29	0	0	0	0	0	0	29	0	0	0	0	0	0	29	0	0	0	0	0	0
30	0	0	0	0	0	0	30	0	0	0	0	0	0	30	0	0	0	0	0	0
31	0	0	0	0	0	0	31	0	0	0	0	0	0	31	0	0	0	0	0	0
32	0	0	0	0	0	0	32	0	0	0	0	0	0	32	0	0	0	0	0	0
33	0	0	0	0	0	0	33	0	0	0	0	0	0	33	0	0	0	0	0	0
34	0	0	0	0	0	0	34	0	0	0	0	0	0	34	0	0	0	0	0	0
35	0	0	0	0	0	0	35	0	0	0	0	0	0	35	0	0	0	0	0	0
36	0	0	0	0	0	0	36	0	0	0	0	0	0	36	0	0	0	0	0	0
37	0	0	0	0	0	0	37	0	0	0	0	0	0	37	0	0	0	0	0	0
38	0	0	0	0	0	0	38	0	0	0	0	0	0	38	0	0	0	0	0	0
39	0	0	0	0	0	0	39	0	0	0	0	0	0	39	0	0	0	0	0	0
40	0	0	0	0	0	0	40	0	0	0	0	0	0	40	0	0	0	0	0	0
41	0	0	0	0	0	0	41	0	0	0	0	0	0	41	0	0	0	0	0	0
42	0	0	0	0	0	0	42	0	0	0	0	0	0	42	0	0	0	0	0	0
43	0	0	0	0	0	0	43	0	0	0	0	0	0	43	0	0	0	0	0	0
44	0	0	0	0	0	0	44	0	0	0	0	0	0	44	0	0	0	0	0	0
45	0	0	0	0	0	0	45	0	0	0	0	0	0	45	0	0	0	0	0	0
46	0	0	0	0	0	0	46	0	0	0	0	0	0	46	0	0	0	0	0	0
47	0	0	0	0	0	0	47	0	0	0	0	0	0	47	0	0	0	0	0	0
48	0	0	0	0	0	0	48	0	0	0	0	0	0	48	0	0	0	0	0	0
49	0	0	0	0	0	0	49	0	0	0	0	0	0	49	0	0	0	0	0	0

DATE 05/31/95
 CALENDAR YEAR 1993

** FATAL ACCIDENTS / ALC INVOLVED - 1993 **

HS1380
PARISH: STATE TOTALS
CITY :

***** LOUISIANA HIGHWAY SAFETY COMMISSION *****
** FATAL & INJURY ACCIDENT FILE **
DATA AVAILABLE AS OF: 03/09/95

PAGE 14
DATE 05/31/95
CALENDAR YEAR 1993

***** DRIVER AGE	URBAN	RURAL	TOTAL	***** OCCUPANT AGE	URBAN	RURAL	TOTAL	***** PEDESTRIAN AGE	URBAN	RURAL	TOTAL
50	0	5	5	50	0	2	2	50	1	1	2
51	0	2	2	51	0	2	2	51	0	2	2
52	0	2	2	52	0	0	0	52	0	0	0
53	1	4	5	53	0	0	0	53	0	0	0
54	0	4	4	54	0	2	2	54	0	0	0
55	1	2	3	55	1	0	1	55	0	0	0
56	0	2	2	56	0	3	3	56	0	0	0
57	1	5	6	57	0	0	0	57	0	0	0
58	0	0	0	58	0	0	0	58	0	0	0
59	1	1	2	59	0	0	0	59	0	0	0
60	0	0	0	60	0	0	0	60	0	0	0
61	0	0	0	61	0	0	0	61	0	0	0
62	0	0	0	62	0	1	1	62	0	1	1
63	0	0	0	63	0	0	0	63	0	0	0
64	0	0	0	64	0	1	1	64	0	0	0
65	0	0	0	65	0	0	0	65	0	0	0
66	0	1	1	66	0	1	1	66	0	1	1
67	0	1	1	67	0	0	0	67	0	0	0
68	0	1	1	68	0	0	0	68	0	0	0
69	0	0	0	69	0	1	1	69	0	0	0
70	0	0	0	70	0	2	2	70	0	0	0
71	1	0	1	71	0	0	0	71	0	0	0
72	0	0	0	72	0	0	0	72	0	0	0
73	1	1	2	73	0	1	1	73	0	0	0
74	0	1	1	74	0	1	1	74	0	0	0
75	0	0	0	75	1	0	1	75	0	0	0
76	1	0	1	76	0	0	0	76	0	0	0
77	0	0	0	77	0	0	0	77	0	0	0
78	0	0	0	78	0	0	0	78	0	0	0
79	0	0	0	79	0	0	0	79	0	0	0
80	1	0	1	80	0	0	0	80	0	0	0
81	0	1	1	81	0	0	0	81	0	0	0
82	0	0	0	82	0	0	0	82	0	0	0
83	0	0	0	83	0	0	0	83	0	0	0
84	0	0	0	84	0	0	0	84	0	0	0
85	0	0	0	85	0	0	0	85	0	0	0
86	0	0	0	86	0	0	0	86	0	0	0
87	0	0	0	87	0	0	0	87	0	0	0
88	0	0	0	88	0	0	0	88	0	0	0
89	0	0	0	89	0	0	0	89	0	0	0
90	0	0	0	90	0	1	1	90	0	0	0
91	0	0	0	91	0	0	0	91	0	0	0
92	0	0	0	92	0	0	0	92	0	0	0
93	0	0	0	93	0	0	0	93	0	0	0
94	0	0	0	94	0	0	0	94	0	0	0
95	0	0	0	95	0	0	0	95	0	0	0
96	0	0	0	96	0	0	0	96	0	0	0
97	0	0	0	97	0	0	0	97	0	0	0
98	0	0	0	98	0	0	0	98	0	0	0
99	0	0	0	99	0	0	0	99	0	0	0
***** TOTAL	125	327	452	***** TOTAL	82	207	289	***** TOTAL	22	40	62

1993
YOUTH TRAFFIC
CRASH DATA

FACTS ABOUT 15-20 YEAR OLD FATAL DRIVERS

THE CRASHES THESE DRIVERS WERE INVOLVED IN

- 1) 67 crashes
- 2) 54, or 81%, occurred in rural areas
- 3) 9 of the 54, or 17%, were between 3 and 4 am
- 4) 25, or 37%, involved alcohol
- 5) 20, or 80%, of the 25 alcohol involved occurred in rural areas
- 6) 40, or 60%, were single vehicle crashes
- 7) 28, or 42%, occurred Saturday and Sunday
- 8) 16 of the 54 rural, or 30%, occurred Saturday
- 9) 41, or 61%, occurred on State Routes
- 10) 43, or 64%, of the crashes primary contributing factor was due to "violations"
- 11) 40, or 60%, type of accident "running off roadway"
- 12) 40, or 60%, type of collision "non-collision"
- 13) 13 of the 54 rural, or 24%, were in the Troop E area (Alexandria)

THE DRIVERS

- 1) 68 drivers
- 2) 55, or 81%, were male
- 3) 7, or 10%, were belted
- 4) 55, or 81%, were rural drivers
- 5) 24, or 35%, "had been drinking"
(there were no HBD 15 & 16 year old drivers)
- 6) 18, or 26%, were cited for speed
- 7) 29, or 43%, were totally ejected
- 8) 35, or 51%, were tested for alcohol

OTHER FACTS

- 1) 28, or 41%, of the vehicles were light trucks
- 2) 50 occupants
- 3) 6, or 12%, of the occupants were belted
- 4) 35, or 70%, were age 15-20
- 5) No pedestrians were involved

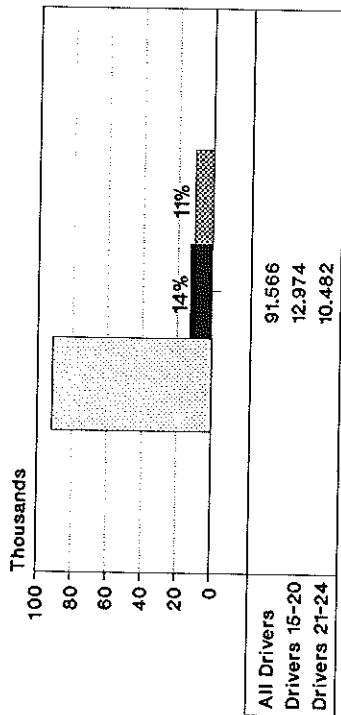
Fatal drivers 15-20 usually:

- 1) Are driving in a rural area
- 2) Drive pickup trucks
- 3) Do not buckle up
- 4) Were drinking
- 5) Were speeding
- 6) Are male
- 7) Were in a single vehicle crash
- 8) Had an occupant in the same age group in the vehicle

1993 Louisiana Youth Statistics

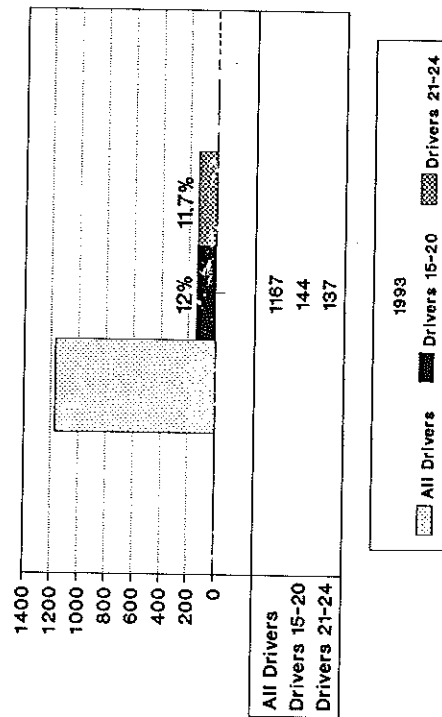
- 48 drivers ages 15-24 were killed in alcohol-involved crashes. This number represents 39 percent of all fatalities in that age group.
- 26 drivers ages 17-20 were killed in alcohol-involved crashes. This number represents 47 percent of all fatalities in that age group.
- 63 percent of 15-24 year old alcohol-involved driver fatalities were in single-vehicle crashes.
- 71 percent of 15-24 year old driver alcohol-involved driver fatalities occurred in rural areas.
- 79 percent of the 15-24 year old driver alcohol-involved driver fatalities occurred on the weekend (Friday-Sunday).
- There were 12,730 fatal and injury crashes involving drivers 15-24 years of age. Alcohol was involved in 1,076 (or 9 percent) of these crashes.
- 68 drivers ages 15-20 were killed in traffic crashes.
- 56 occupants who were riding with a driver between the ages 15-20 were killed.
- 66 occupants, regardless of the age of the driver, were killed in traffic crashes.

FATAL & INJURY CRASHES DRIVERS BY AGE GROUP



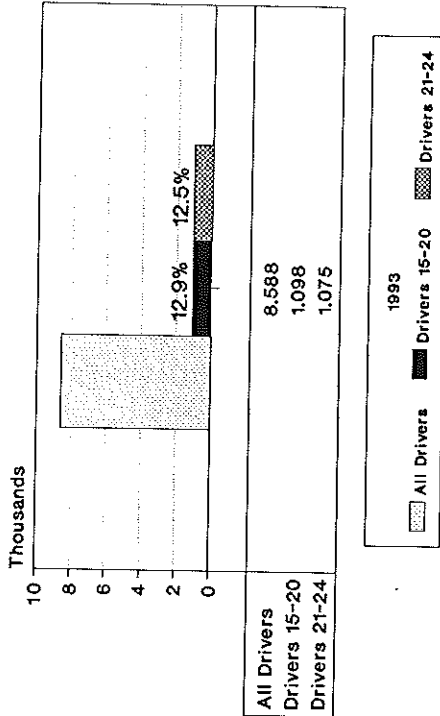
DRIVER8

FATAL CRASHES DRIVERS BY AGE GROUP



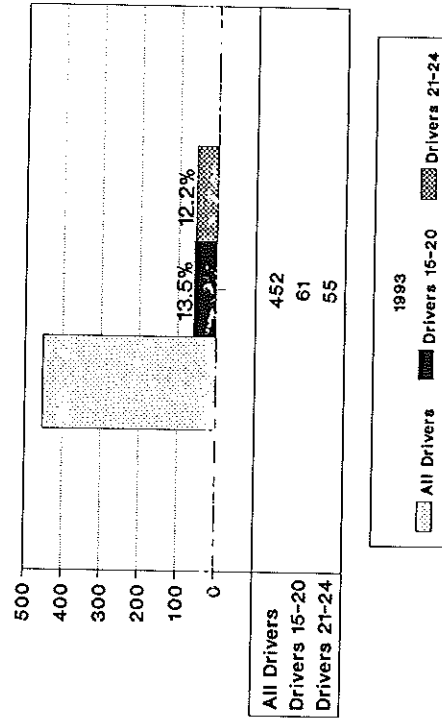
DRIVER7

ALCOHOL F&I CRASHES DRIVERS BY AGE GROUP



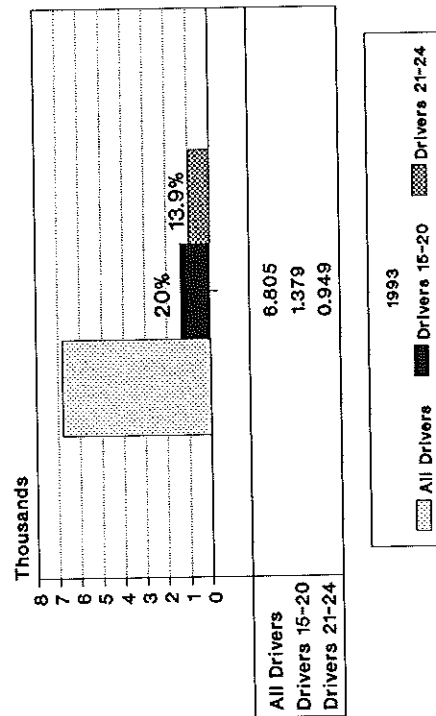
DRIVER10

ALCOHOL FATAL CRASHES DRIVERS BY AGE GROUP



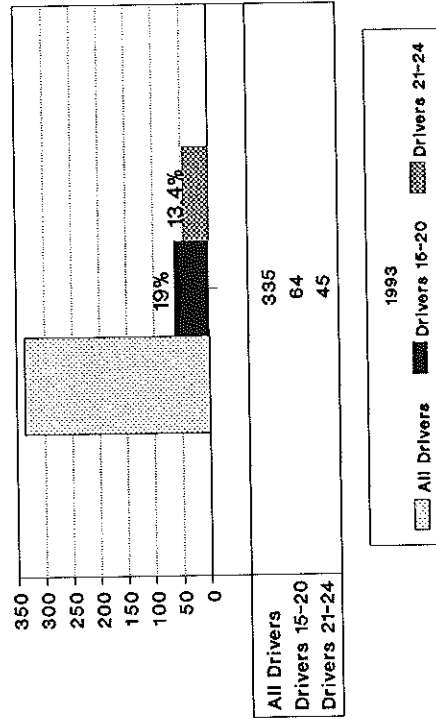
DRIVER11

SPEED F&I CRASHES DRIVERS BY AGE GROUP



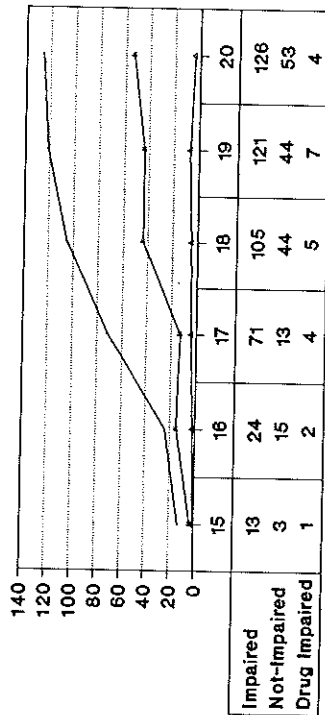
DRIVE10B

SPEED FATAL CRASHES DRIVERS BY AGE GROUP



DRIVE10C

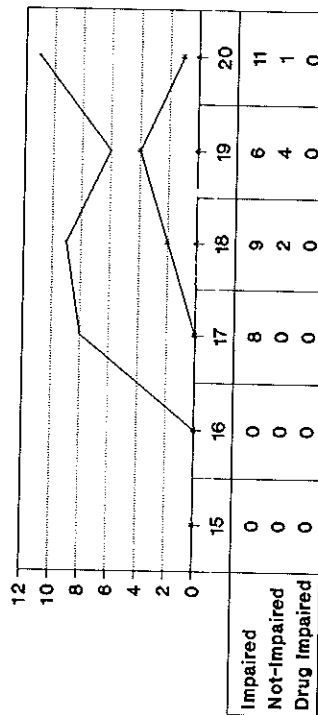
FATAL & INJURY CRASHES DRIVERS 15-20 BY AGE



1993
— Impaired — Not-Impaired — Drug Impaired

Impaired 460; Not Imp 172; Drugged 23
DRIVER3

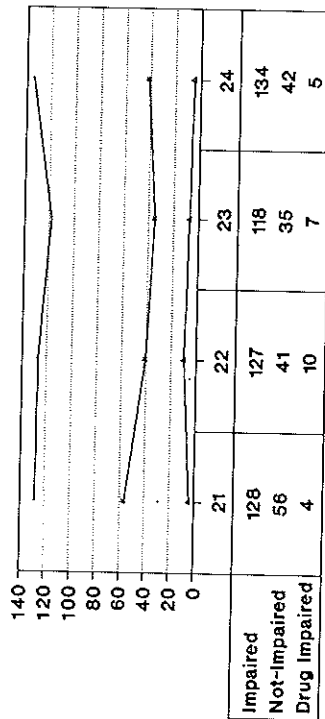
FATAL CRASHES DRIVERS 15-20 BY AGE



1993
— Impaired — Not-Impaired — Drug Impaired

Impaired 34; Not Imp 7; Drugged 0
DRIVER3A

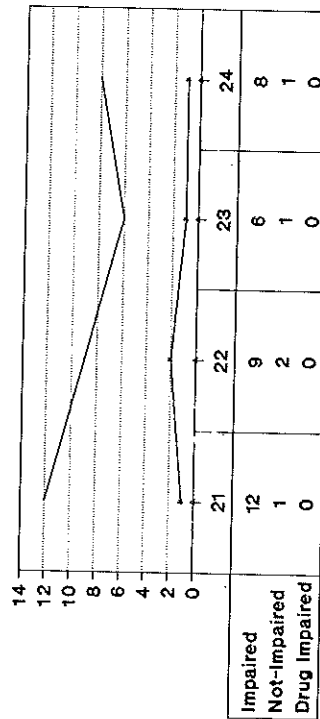
FATAL & INJURY CRASHES DRIVERS 21-24 BY AGE



1993
— Impaired — Not-Impaired — Drug Impaired

Impaired 507; Not Imp 174; Drugged 26
DRIVER3B

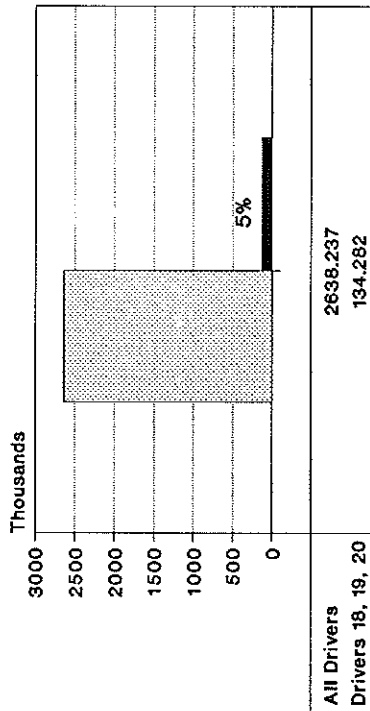
FATAL CRASHES DRIVERS 21-24 BY AGE



1993
— Impaired — Not-Impaired — Drug Impaired

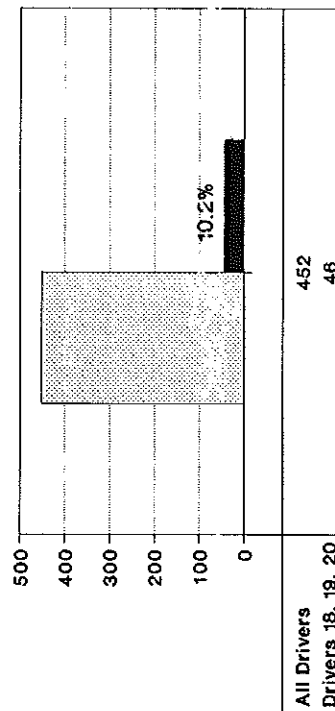
Impaired 35; Not Imp 5; Drugged 0
DRIVER3C

1993 LICENSED DRIVERS DRIVERS 18, 19, 20



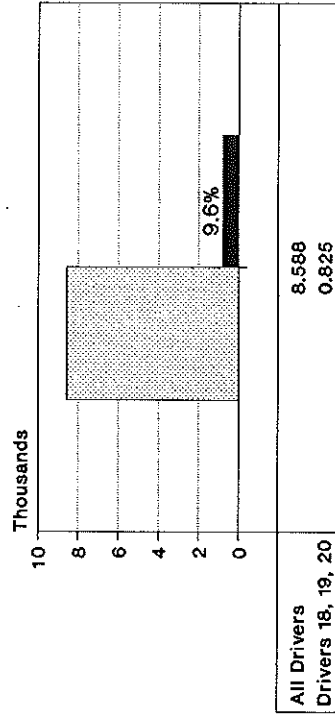
DRIVEK9

ALCOHOL FATAL CRASHES DRIVERS 18, 19, 20



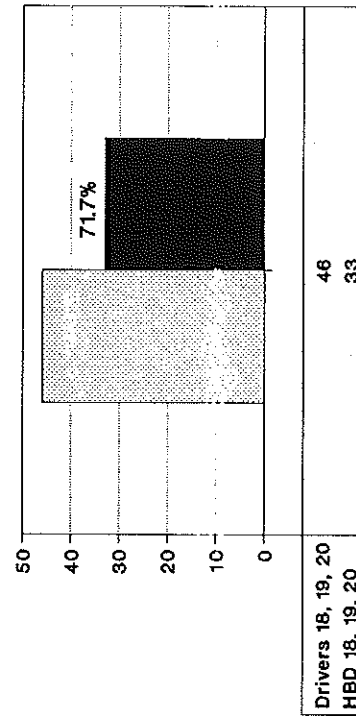
DRIVEK11

ALCOHOL F&I CRASHES DRIVERS 18, 19, 20



DRIVEK10

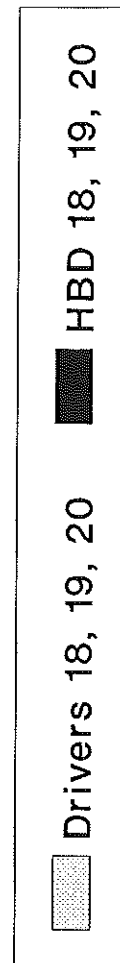
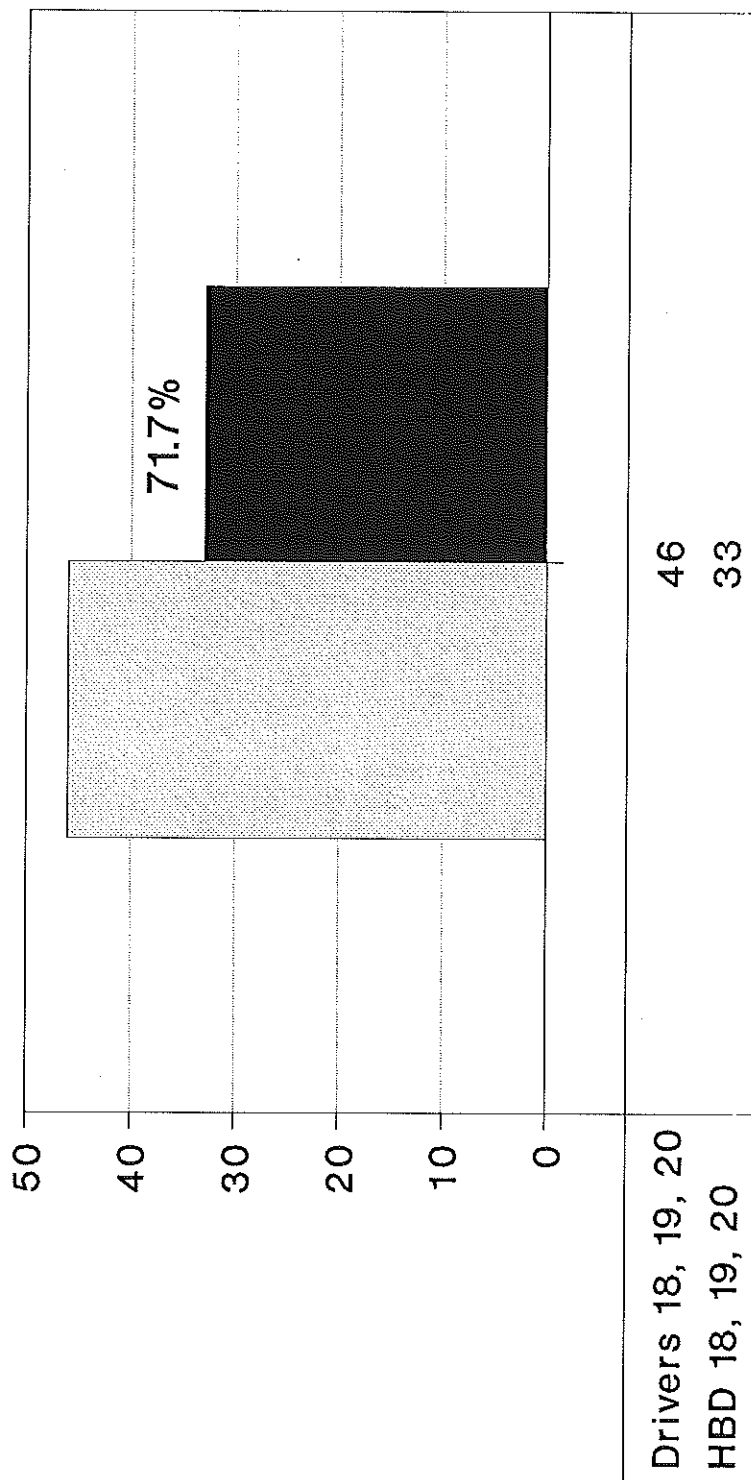
ALCOHOL FATAL CRASHES DRIVERS 18, 19, 20



HBD-Drivers Had Been Drinking
DRIVEK12

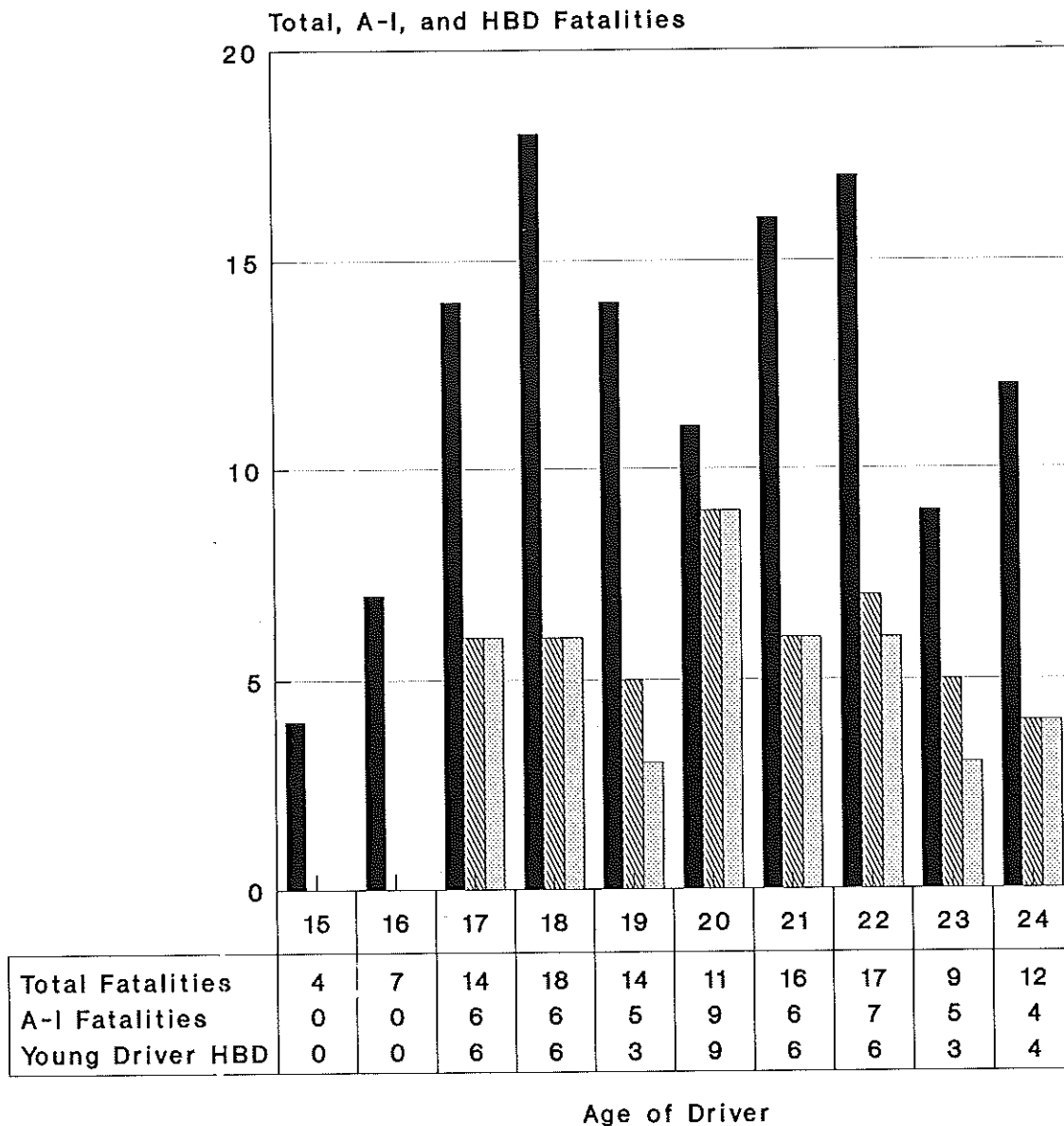
ALCOHOL FATAL CRASHES

DRIVERS 18, 19, 20



HBD=Drivers Had Been Drinking
DRIVEK12

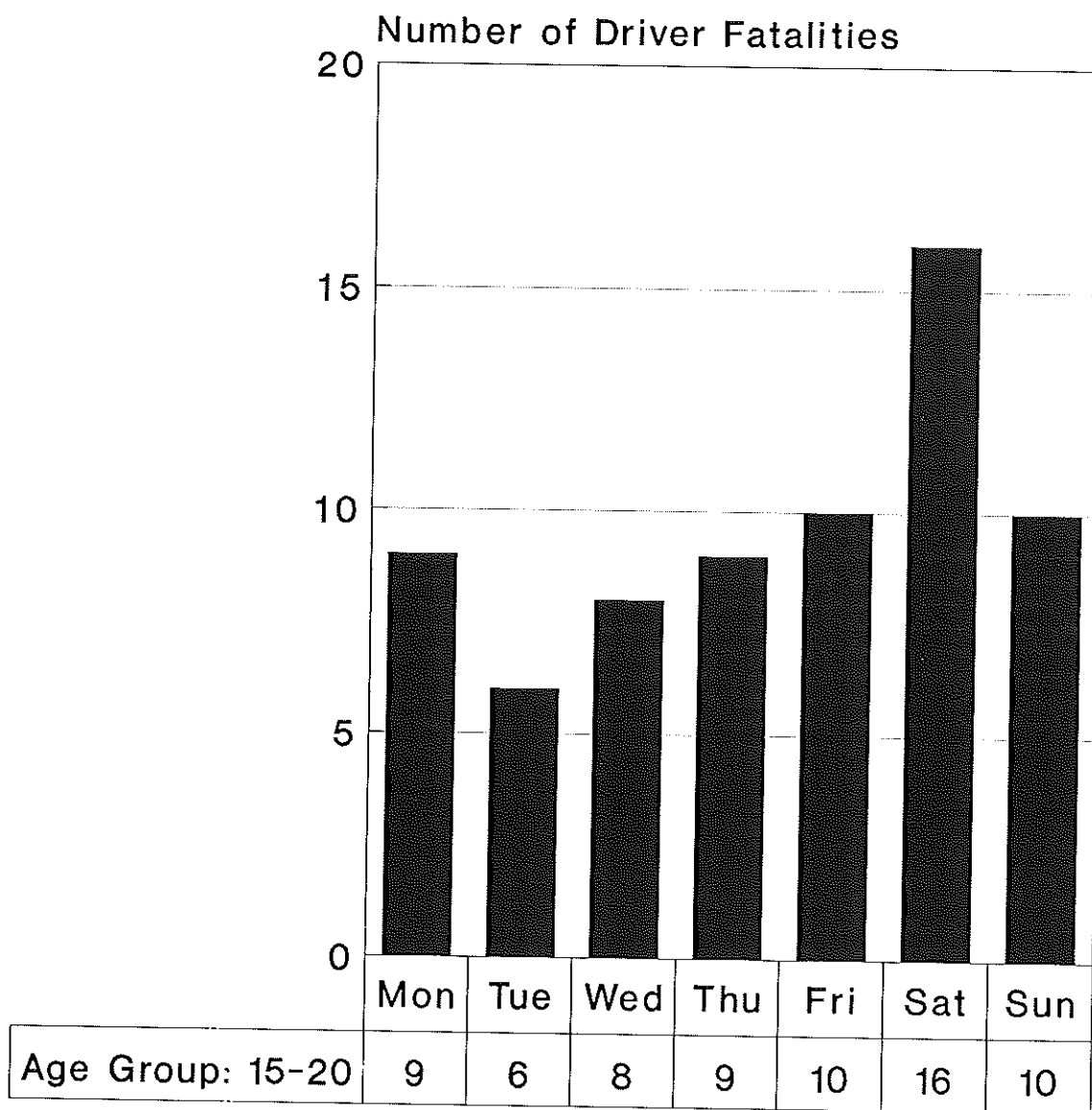
Total and Alcohol-Involved Fatalities Drivers 15-24 Years of Age



Total Fatalities
 A-I Fatalities
 Young Driver HBD

A-I=Alcohol-Involved;
 HBD=Fatal Driver Had Been Drinking

Driver Fatalities by Day of Week 15-20 Year Old Drivers



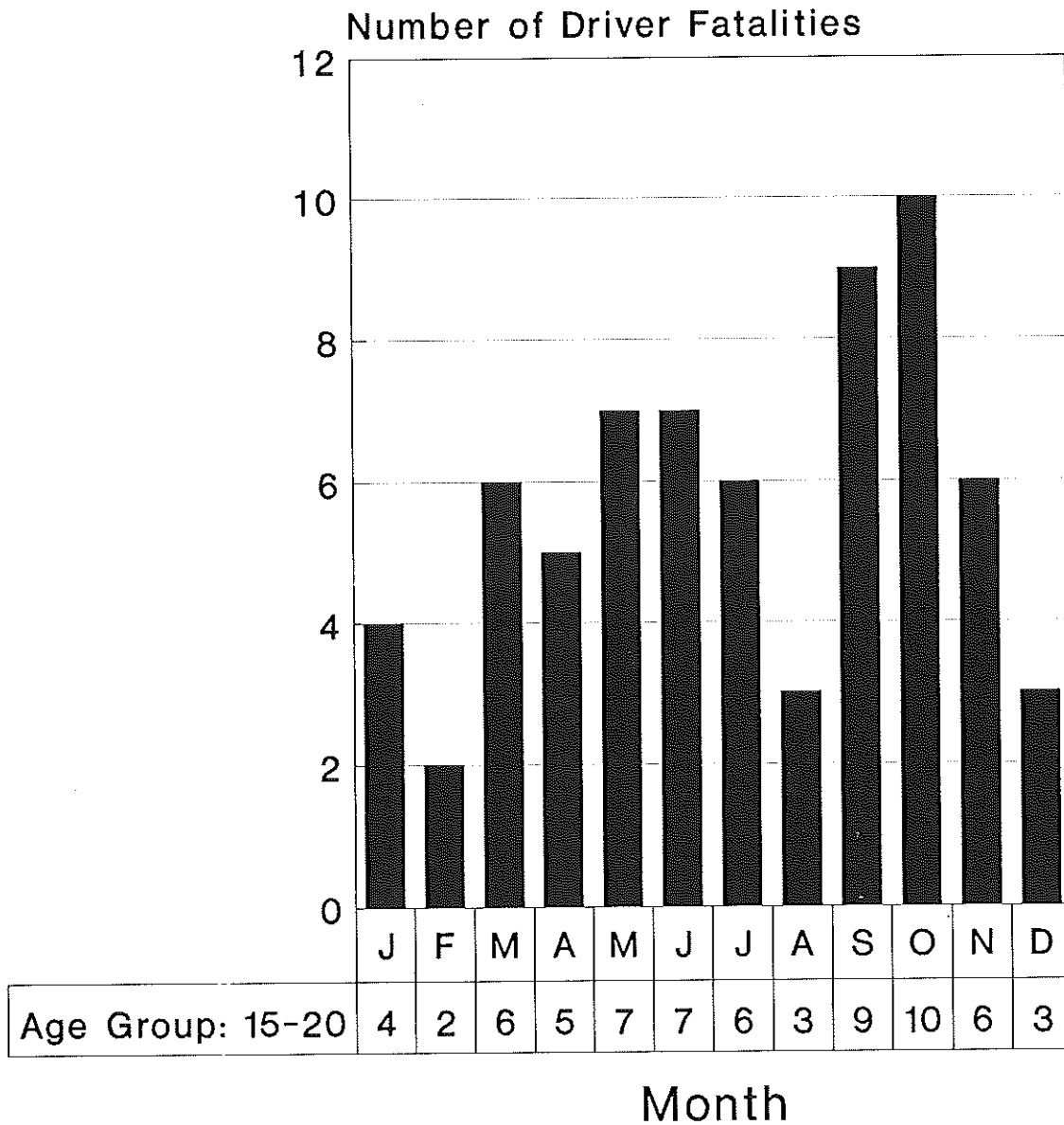
Day of Week

Age Group: 15-20

1993 Data

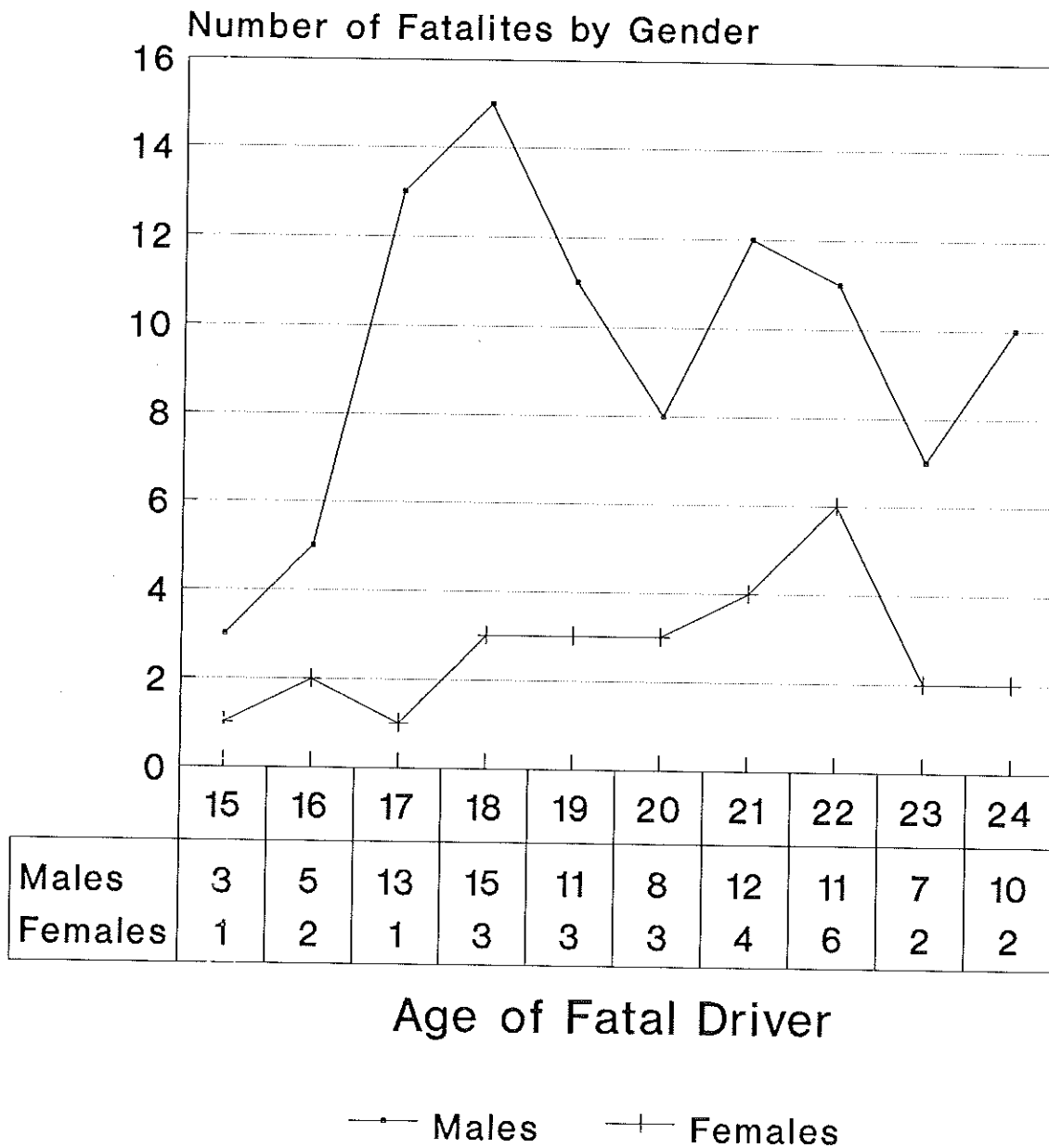
Driver Fatalities by Month

15-20 Year Old Drivers



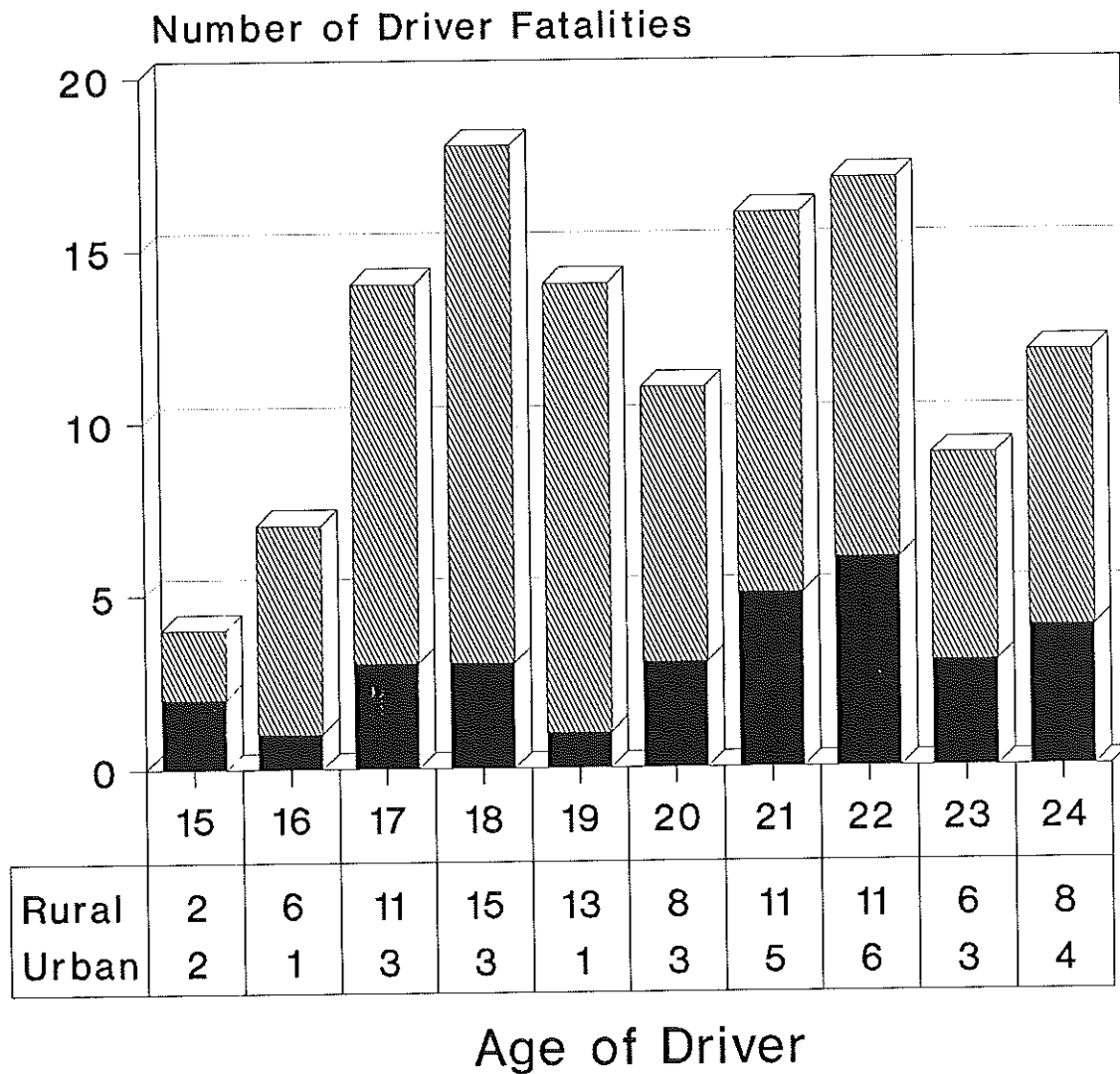
1993 Data

Gender of Fatal Driver Ages 15-24



Young Driver Fatalities

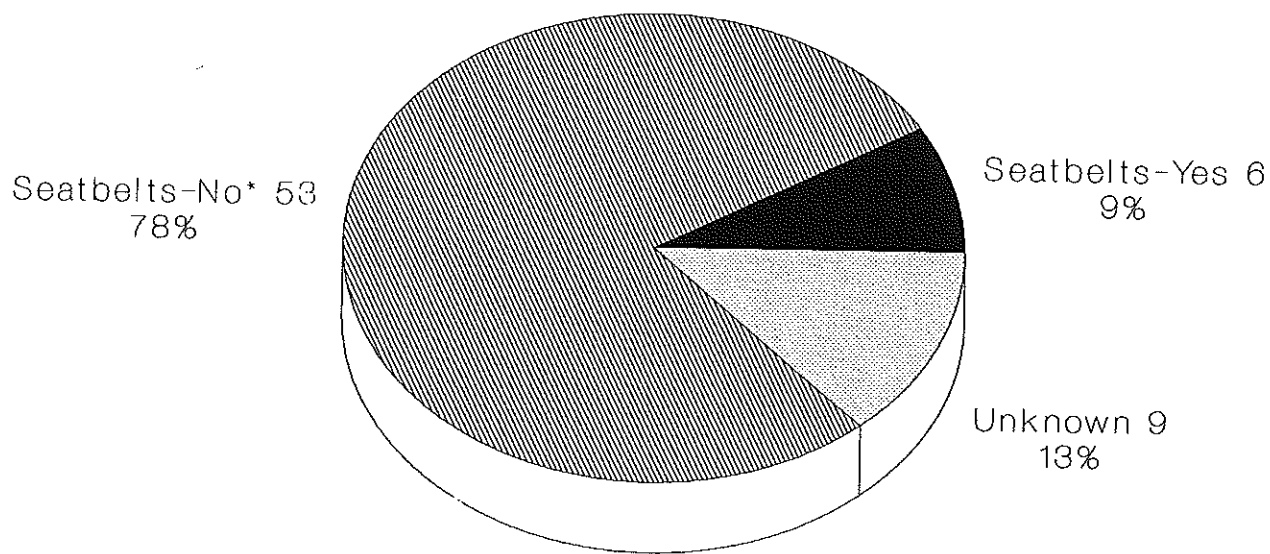
1993 Louisiana Data



Urban
 Rural

Age Group 15-20=68 Driver Fatalities
 Age Group 21-24=54 Driver Fatalities

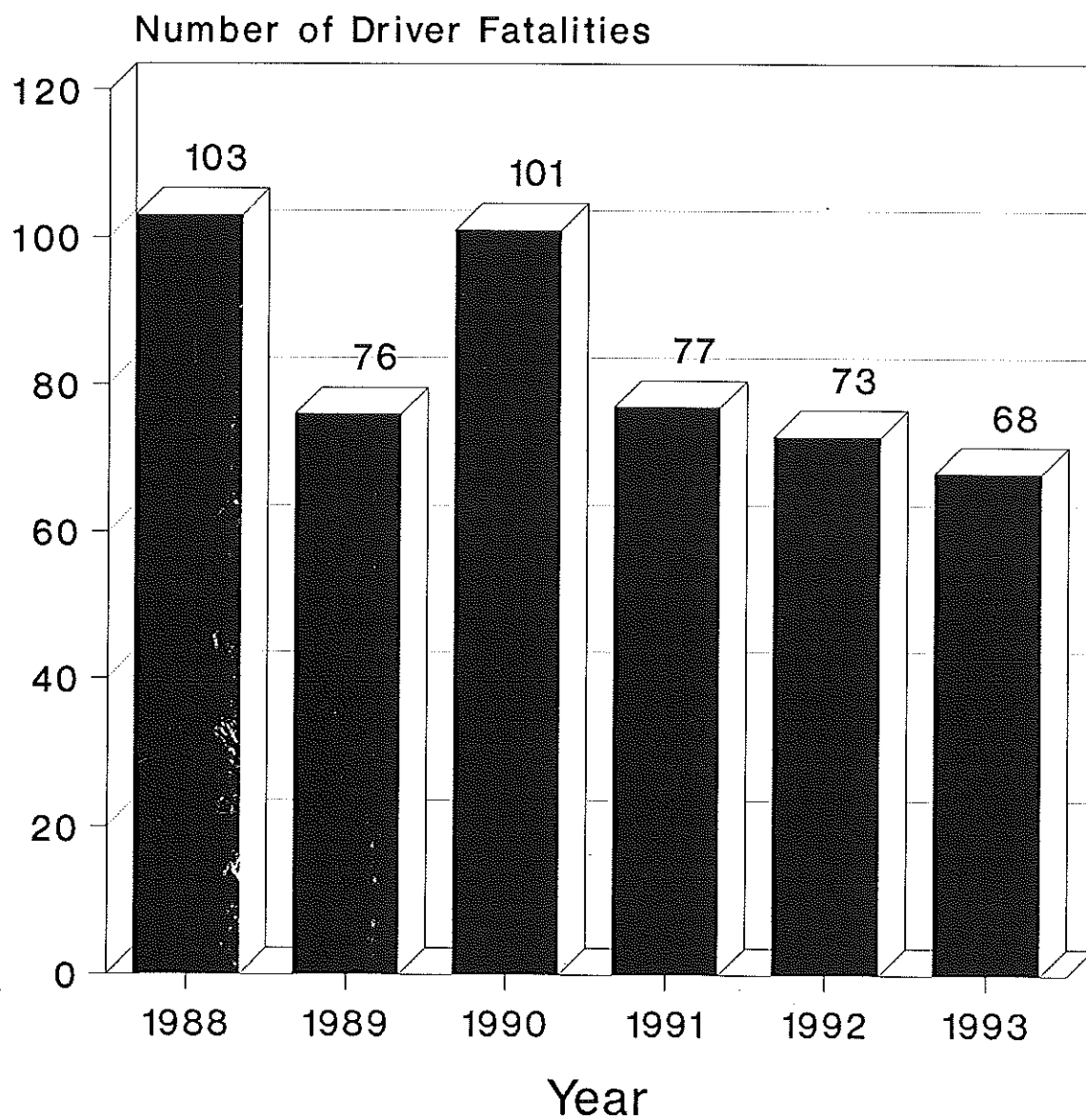
Seatbelt Use/Non-Use 15-20 Year Old Fatal Drivers



*Not Installed or Not Used
1993 Louisiana Data

1988-1993 Driver Fatalities

Drivers 15-20 Years of Age



■ Number of Fatalities

1993 Data